

OPERATIONS

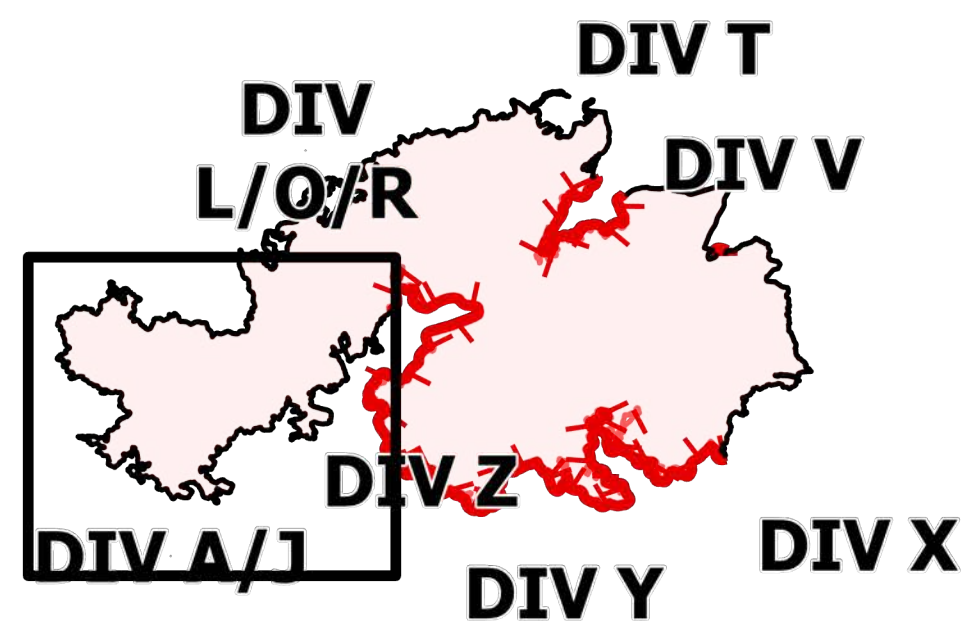
DIV A/J

Telegraph

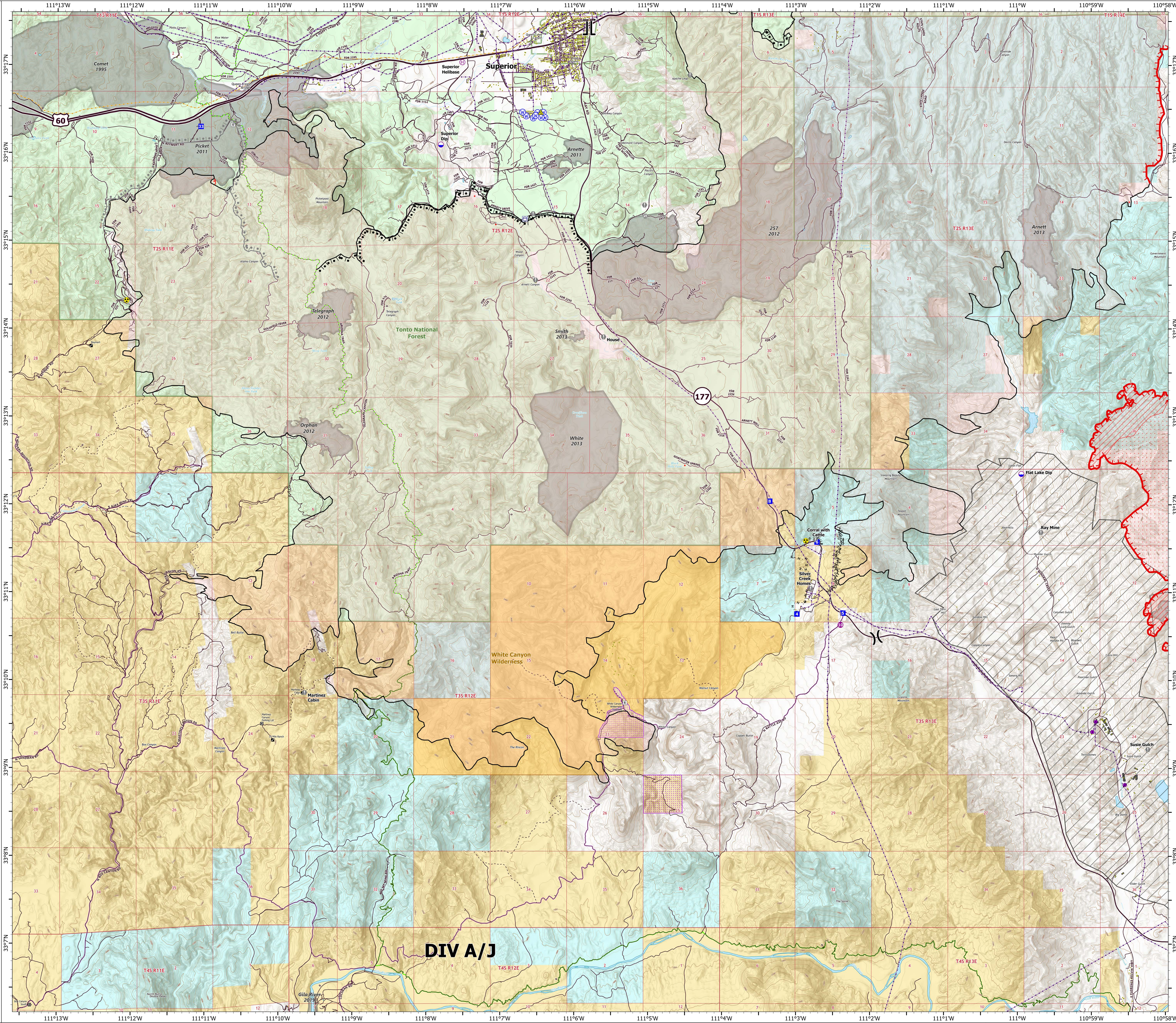
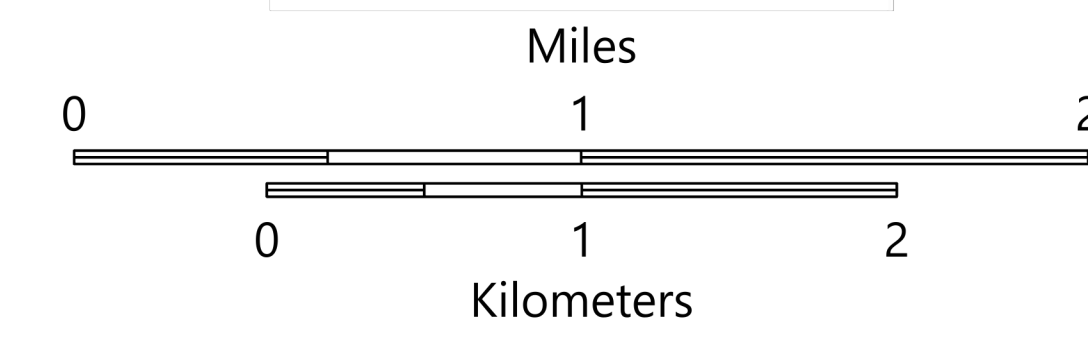
AZ-TNF-1255

6/17/2021

171,242 acres at 6/16/2021 2252 hrs



- Structure
- Substations
- Trailhead
- BLM Planned Portal Sites
- Point of Interest
- Trailhead
- Dip Site
- Helispot
- Helibase
- Division Break
- Branch Break
- Drop Point
- Value at Risk
- Gate
- Safety Zone
- Hazard
- Water Source
- Water Tank
- IR Isolated Heat Source
- Completed Burnout
- Completed Fuel Break
- Completed Hand Line
- Planned Burnout
- Planned Road as Line
- Fire Edge
- Contained Line
- IR Heat Perimeter
- IR Intense Heat
- IR Scattered Heat
- Mine Footprint
- Wildfire Daily Fire Perimeter
- Highway or Major Connecting Road
- Local Connecting Road
- Local Road
- Tonto National Forest Roads
- Tonto National Forest Trails
- Road
- Trail
- Arizona Trail
- Middle Gila Access Route
- Transmission Lines
- Oil and Natural Gas Pipelines
- APS Distribution Overhead Infrastructure
- Structure
- USFS Boundary
- County or Equivalent
- BLM Area of Critical Environmental Concern
- Wilderness Area Boundary
- Federal Land within Wilderness Area
- Township/Range
- Section
- Fire History
- BLM
- BR
- Private
- State
- USFS



DIV A/J

OPERATIONS

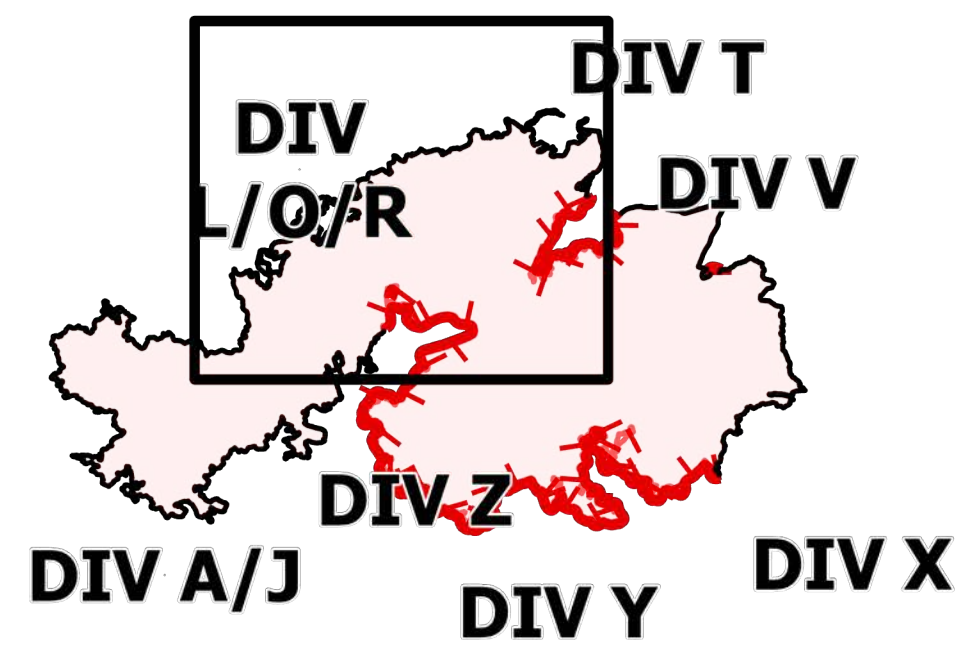
DIV L/O/R

Telegraph

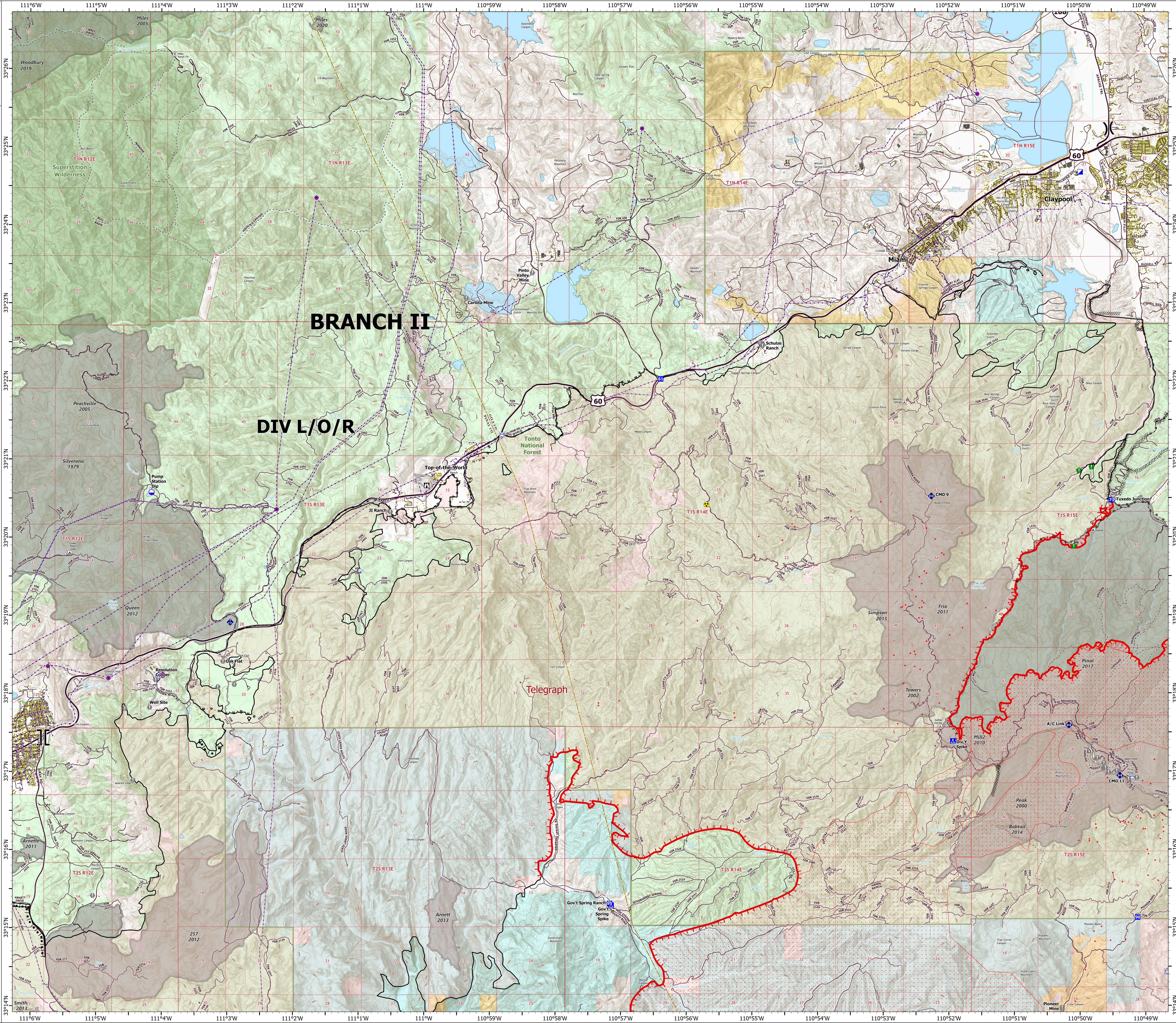


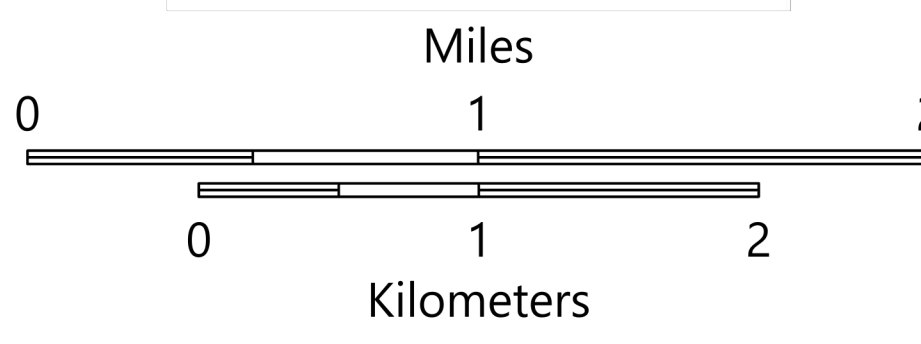

AZ-TNF-1255

6/17/2021

171,242 acres at 6/16/2021 2252 hrs



- Structure
- Substations
- ▲ Campground
- Recreation Residence
- ⊗ Trailhead
- Dip Site
- Helispot
- ⊗ Division Break
- ⊗ Branch Break
- Incident Command Post
- Drop Point
- Camp
- Lookout
- Value at Risk
- Landmark
- Gate
- Bridge
- Resource Location
- Mobile Weather Unit
- Repeater
- Hazard
- Water Source
- Pump
- Water Tank
- IR Isolated Heat Source
- Completed Burnout
- ⊗ Completed Dozer Line
- ⊗ Completed Hand Line
- ⊗ Completed Mixed Construction Line
- ⊗ Completed Road as Line
- ⊗ Planned Road as Line
- ⊗ Planned Secondary Line
- ⊗ Access or Improved Road
- Fire Edge
- Contained Line
- IR Heat Perimeter
- IR Intense Heat
- IR Scattered Heat
- Wildfire Daily Fire Perimeter
- Highway or Major Connecting Road
- Local Connecting Road
- Local Road
- Tonto National Forest Roads
- Tonto National Forest Trails
- Road
- Transmission Lines
- Oil and Natural Gas Pipelines
- APS Distribution Overhead Infrastructure
- Structure
- USFS Boundary
- County or Equivalent
- Township/Range
- Section
- Fire History
- USFS Wilderness Area
- BLM
- Private
- State
- USFS



BRANCH II

DIV L/O/R

Telegraph

OPERATIONS

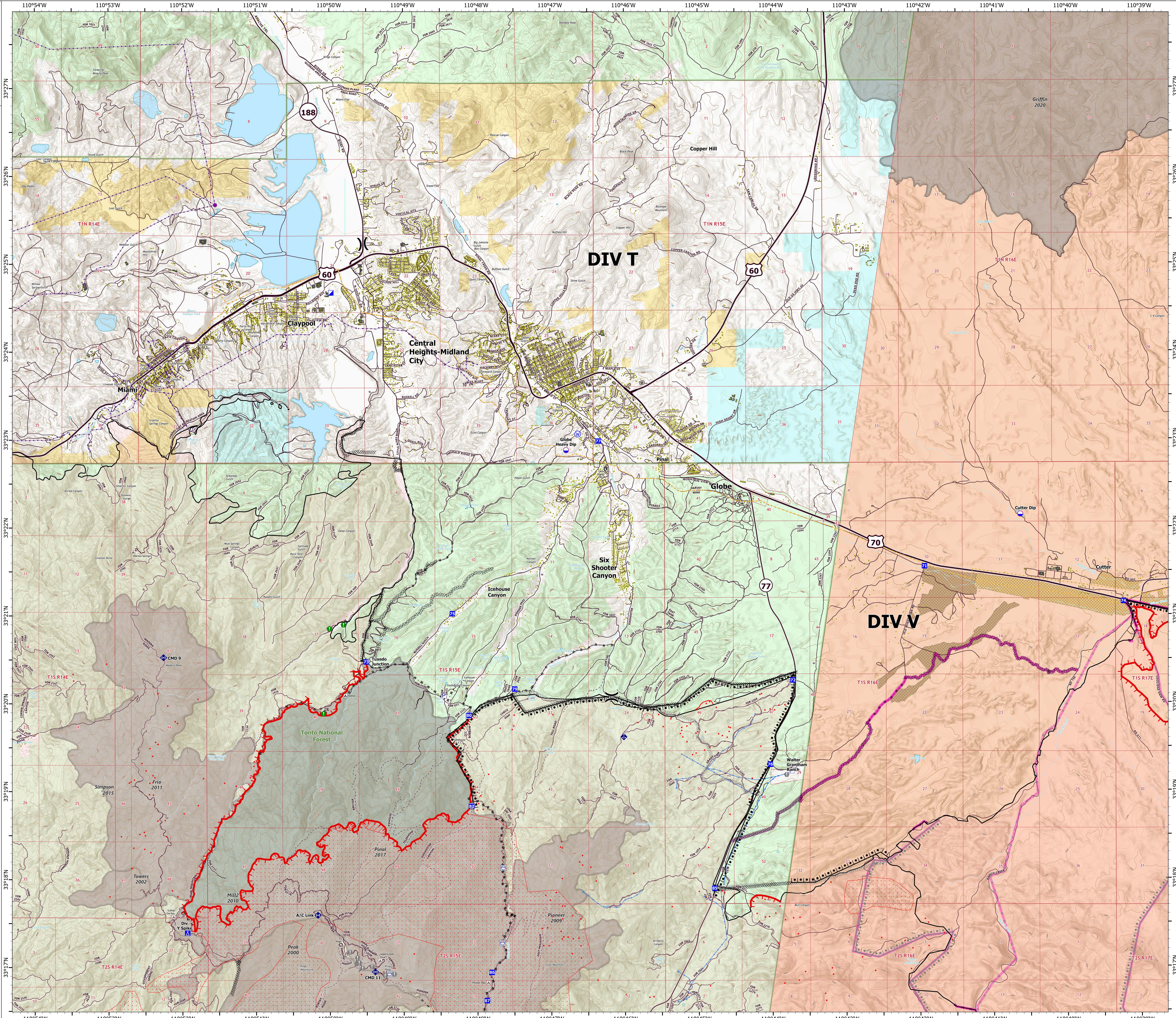
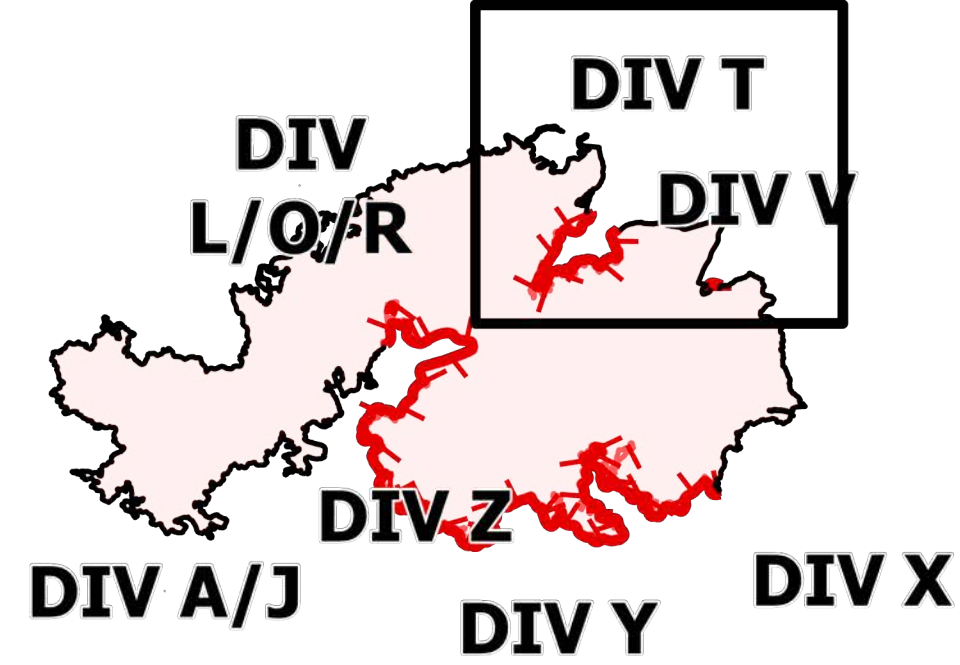
DIV T

Telegraph

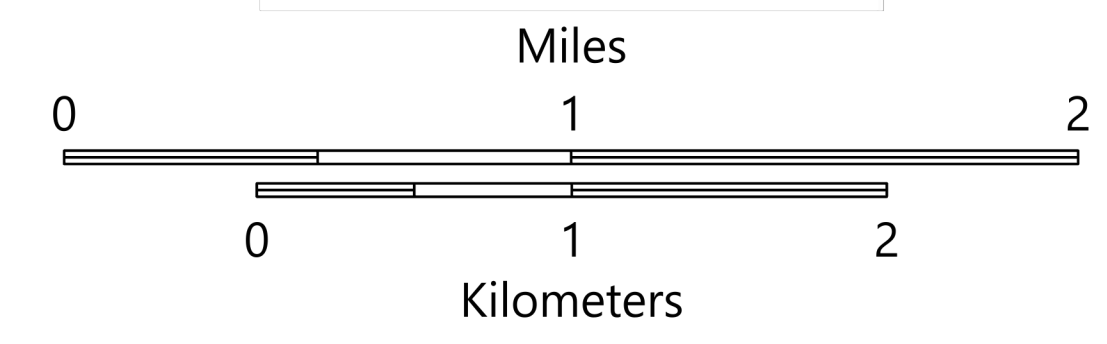
AZ-TNF-1255

6/17/2021

171,242 acres at 6/16/2021 2252 hrs



- Structure
- Substations
- Campground
- District Office
- Recreation Residence
- Trailhead
- Dip Site
- Division Break
- Incident Command Post
- Drop Point
- Camp
- Value at Risk
- Landmark
- Bridge
- Resource Location
- Mobile Weather Unit
- Repeater
- Water Source
- Range VAR Point
- Pump
- Water Tank
- IR Isolated Heat Source
- Completed Burnout
- Completed Dozer Line
- Completed Hand Line
- Completed Mixed Construction Line
- Completed Road as Line
- Planned Dozer Line
- Planned Road as Line
- Fire Edge
- Contained Line
- Mesal Fire Operational Lines
- Completed Burnout
- Completed Dozer Line
- Completed Hand Line
- Completed Road as Line
- Planned Burnout
- Planned Dozer Line
- Planned Road as Line
- IR Heat Perimeter
- IR Intense Heat
- IR Scattered Heat
- Wildfire Daily Fire Perimeter
- Highway or Major Connecting Road
- Local Connecting Road
- Local Road
- Tonto National Forest Roads
- Tonto National Forest Trails
- Road
- Transmission Lines
- Oil and Natural Gas Pipelines
- Range VAR Line
- APS Distribution Overhead Infrastructure
- Structure
- USFS Boundary
- County or Equivalent
- Township/Range
- Section
- Fire History
- BLM
- Indian Lands
- Private
- State
- USFS
- 2021 San Carlos Fuels Treatment - Mechanical
- 2021 San Carlos Fuels Treatment - Rx Burn

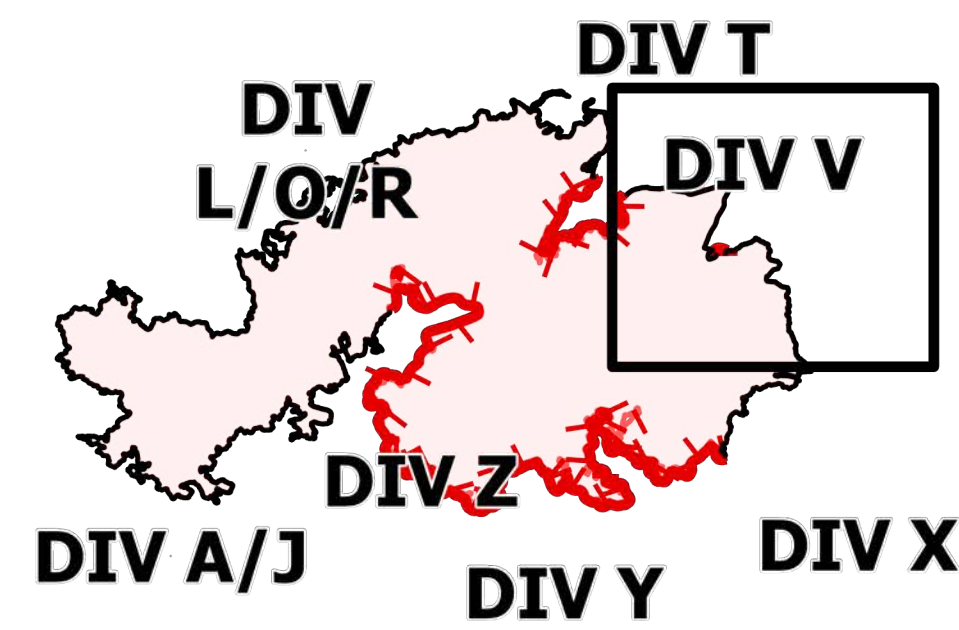


OPERATIONS

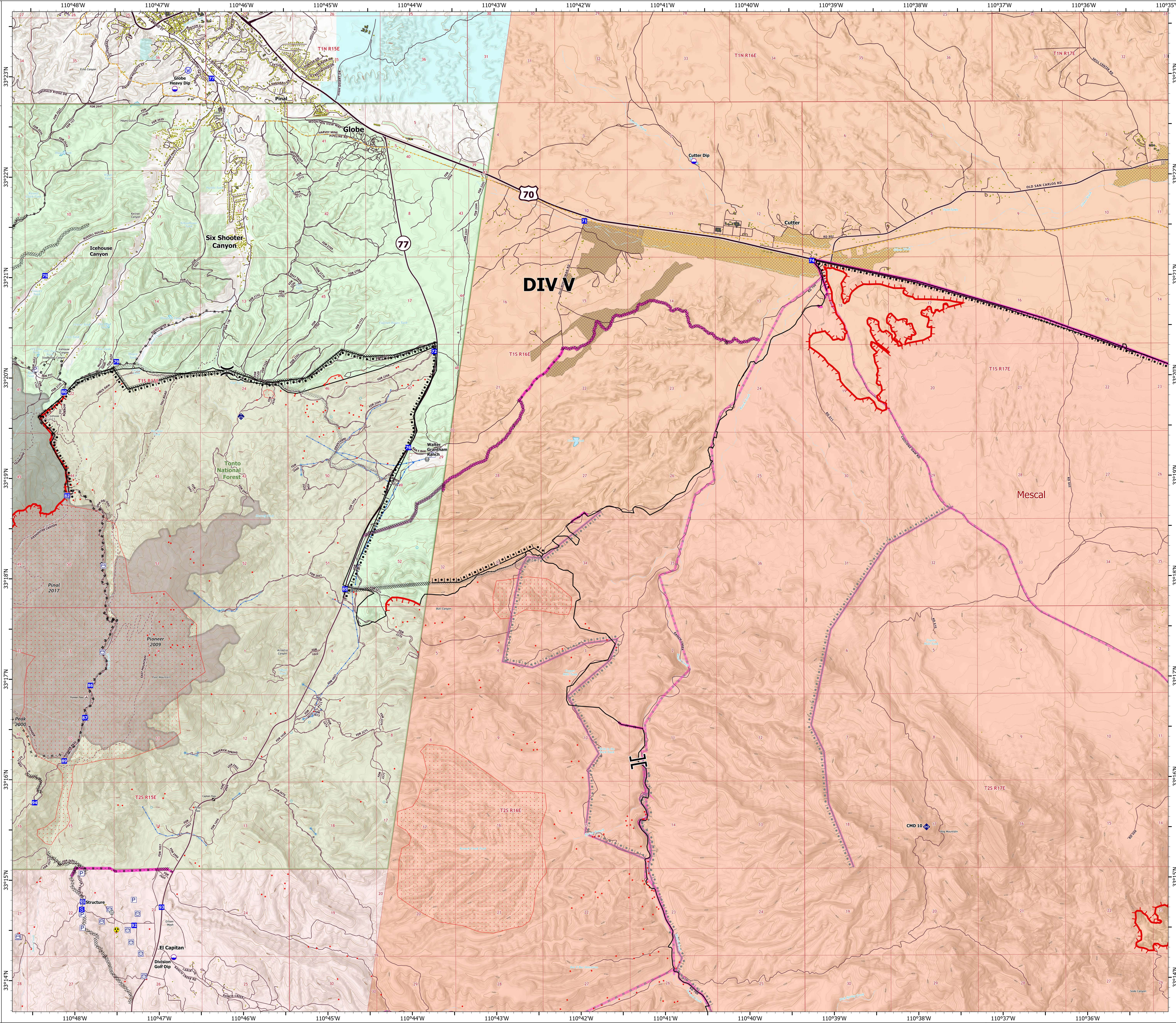
DIV V

Telegraph
AZ-TNF-1255
6/17/2021

171,242 acres at 6/16/2021 2252 hrs



- Structure
- ▲ Campground
- District Office
- ⊗ Trailhead
- ⊗ Other
- Dip Site
- ⌋ Division Break
- ⌋ Branch Break
- Drop Point
- Staging Area
- ⊗ Value at Risk
- ⊗ Gate
- ⊗ Bridge
- ◆ Mobile Weather Unit
- ◆ Repeater
- ◆ Hazard
- ⊗ Water Source
- Range VAR Point
- ⊗ Pump
- ⊗ Water Tank
- IR Isolated Heat Source
- Completed Burnout
- ⊗ Completed Dozer Line
- ⊗ Completed Hand Line
- ⊗ Completed Mixed Construction Line
- ⊗ Completed Road as Line
- ⊗ Planned Dozer Line
- ⊗ Planned Road as Line
- Fire Edge
- Contained Line
- Mescal Fire Operational Lines
 - Completed Burnout
 - ⊗ Completed Dozer Line
 - ⊗ Completed Hand Line
 - ⊗ Completed Road as Line
 - ⊗ Planned Burnout
 - ⊗ Planned Dozer Line
 - ⊗ Planned Mixed Construction Line
 - ⊗ Planned Road as Line
- IR Heat Perimeter
- ⊗ IR Scattered Heat
- Wildfire Daily Fire Perimeter
- Highway or Major Connecting Road
- Local Connecting Road
- Local Road
- Tonto National Forest Roads
- Tonto National Forest Trails
- Road
- Oil and Natural Gas Pipelines
- Range VAR Line
- APS Distribution Overhead Infrastructure
- Structure
- USFS Boundary
- County or Equivalent
- Township/Range
- Section
- Fire History
- Indian Lands
- Private
- State
- USFS
- 2021 San Carlos Fuels Treatment - Mechanical
- 2021 San Carlos Fuels Treatment - Rx Burn

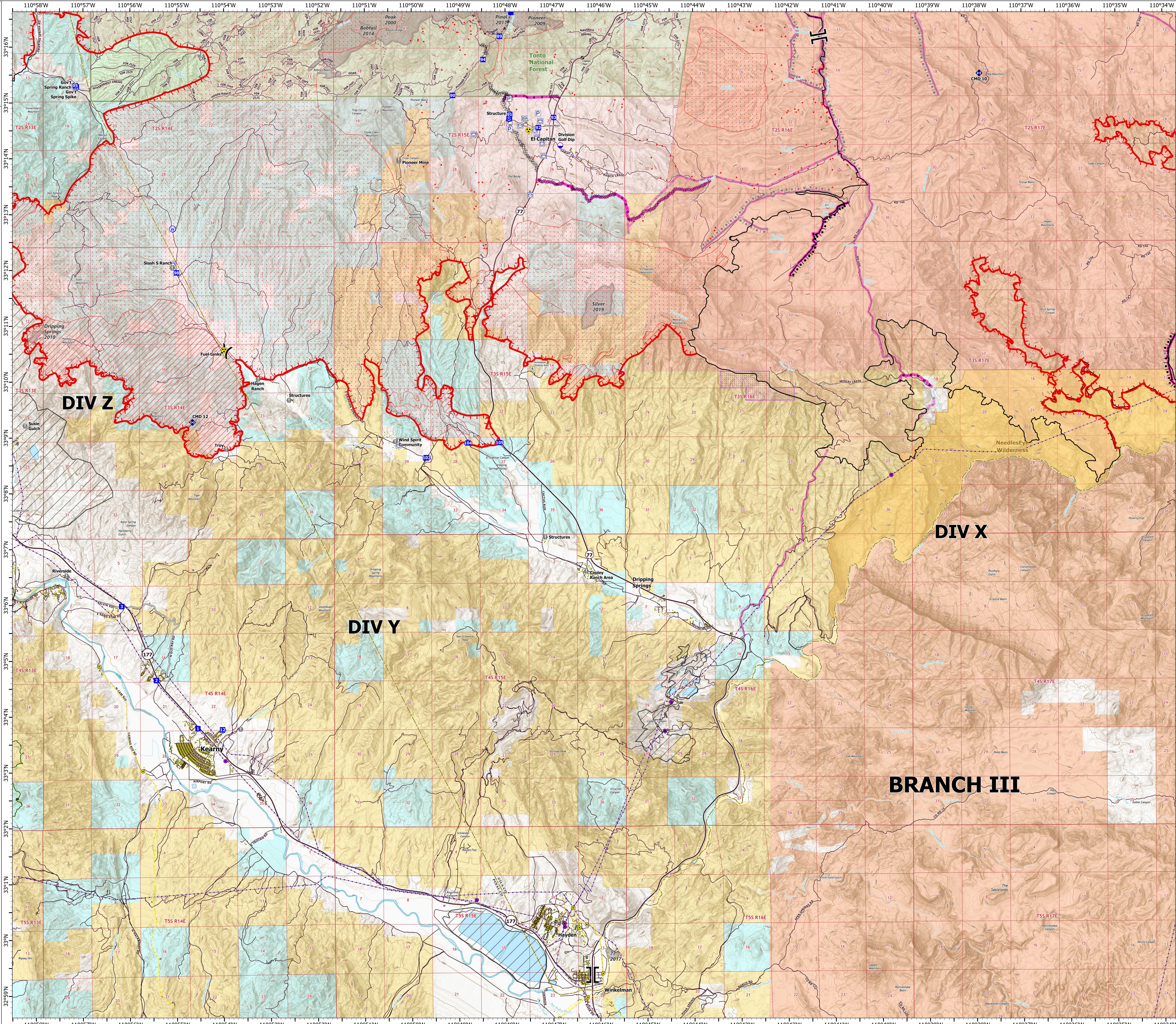
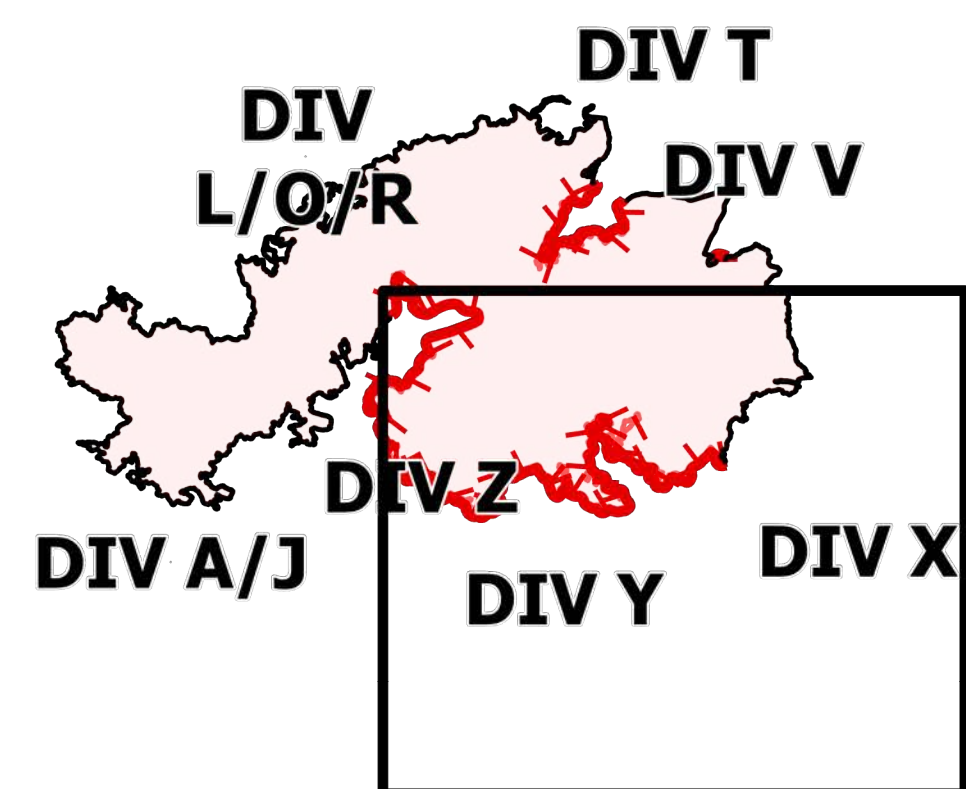


OPERATIONS

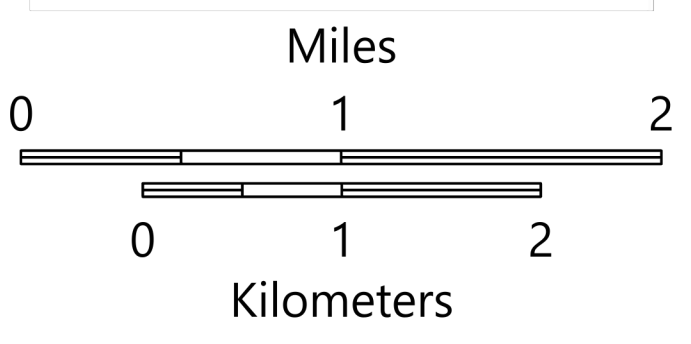
DIV X

Telegraph
AZ-TNF-1255
6/17/2021

171,242 acres at 6/16/2021 2252 hrs



- Structure
- Substations
- Gas Facility
- Other
- Trailhead
- Dip Site
- ⌋ Division Break
- ⌋ Branch Break
- Drop Point
- Camp
- Staging Area
- Value at Risk
- Gate
- Repeater
- Hazard
- Water Source
- Pump
- Water Tank
- IR Isolated Heat Source
- ⊘ Completed Dozer Line
- ⊘ Completed Hand Line
- ⊘ Completed Mixed Construction Line
- ⊘ Planned Dozer Line
- ⊘ Access or Improved Road
- ⊘ Fire Edge
- ⊘ Contained Line
- ⊘ Mesal Fire Operational Lines
- ⊘ Completed Burnout
- ⊘ Completed Dozer Line
- ⊘ Completed Hand Line
- ⊘ Completed Mixed Construction Line
- ⊘ Completed Road as Line
- ⊘ Planned Burnout
- ⊘ Planned Mixed Construction Line
- ⊘ Planned Road as Line
- ⊘ IR Heat Perimeter
- ⊘ IR Intense Heat
- ⊘ IR Scattered Heat
- ⊘ Mine Footprint
- ⊘ Wildfire Daily Fire Perimeter
- ⊘ Local Connecting Road
- ⊘ Local Road
- ⊘ Tonto National Forest Roads
- ⊘ Tonto National Forest Trails
- ⊘ Road
- ⊘ Trail
- ⊘ Arizona Trail
- ⊘ Transmission Lines
- ⊘ Gas Line
- ⊘ Oil and Natural Gas Pipelines
- Structure
- USFS Boundary
- County or Equivalent
- BLM Area of Critical Environmental Concern
- Wilderness Area Boundary
- Federal Land within Wilderness Area
- Township/Range
- Section
- Fire History
- BLM
- Indian Lands
- Private
- State
- USFS



OPERATIONS

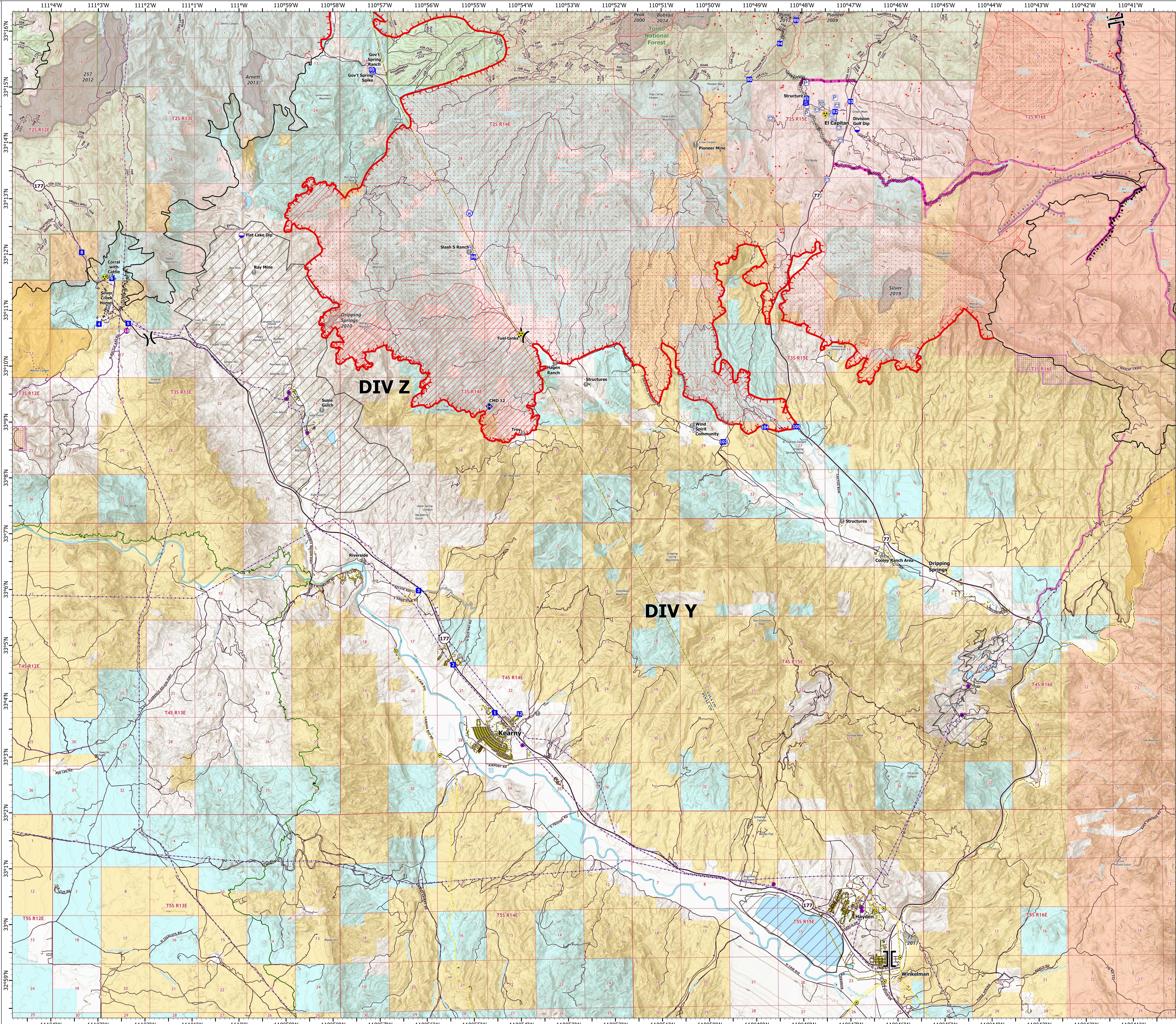
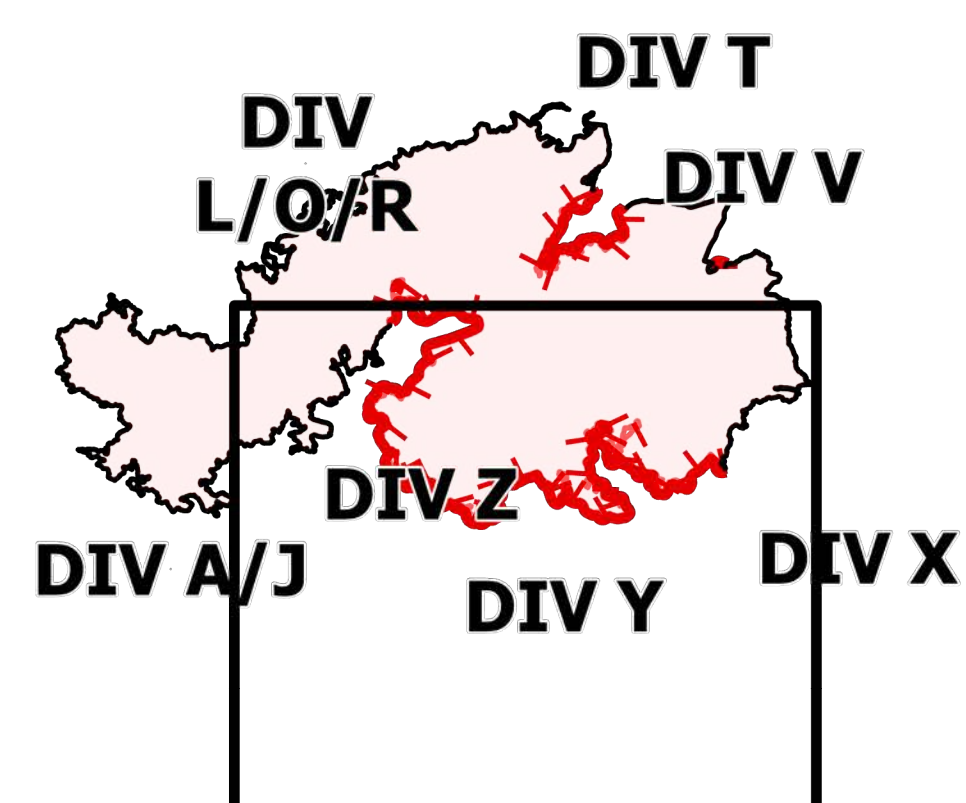
DIV Y/Z

Telegraph

AZ-TNF-1255

6/17/2021

171,242 acres at 6/16/2021 2252 hrs



- Structure
- Substations
- Gas Facility
- Other
- ⊠ Trailhead
- ⊠ BLM Planned Portal Sites
- Dip Site
- Helispot
- ⊠ Division Break
- ⊠ Branch Break
- ⊠ Drop Point
- ⊠ Camp
- ⊠ Staging Area
- Value at Risk
- Gate
- Repeater
- Hazard
- Water Source
- Pump
- Water Tank
- IR Isolated Heat Source
- ⊠ Completed Dozer Line
- ⊠ Completed Fuel Break
- ⊠ Completed Hand Line
- ⊠ Completed Mixed Construction Line
- ⊠ Completed Road as Line
- ⊠ Planned Dozer Line
- ⊠ Planned Road as Line
- ⊠ Access or Improved Road
- ⊠ Fire Edge
- ⊠ Contained Line
- ⊠ Mesal Fire Operational Lines
- ⊠ Completed Burnout
- ⊠ Completed Dozer Line
- ⊠ Completed Hand Line
- ⊠ Completed Road as Line
- ⊠ Planned Burnout
- ⊠ Planned Mixed Construction Line
- ⊠ Planned Road as Line
- ⊠ IR Heat Perimeter
- ⊠ IR Intense Heat
- ⊠ IR Scattered Heat
- ⊠ Mine Footprint
- ⊠ Wildfire Daily Fire Perimeter
- ⊠ Local Connecting Road
- ⊠ Local Road
- ⊠ Tonto National Forest Roads
- ⊠ Tonto National Forest Trails
- ⊠ Road
- ⊠ Trail
- ⊠ Arizona Trail
- ⊠ Middle Gila Access Route
- ⊠ Transmission Lines
- ⊠ Gas Line
- ⊠ Oil and Natural Gas Pipelines
- ⊠ APS Distribution Overhead Infrastructure
- ⊠ Structure
- ⊠ USFS Boundary
- ⊠ County or Equivalent
- ⊠ BLM Area of Critical Environmental Concern
- ⊠ Wilderness Area Boundary
- ⊠ Federal Land within Wilderness Area
- ⊠ Township/Range
- ⊠ Section
- ⊠ Fire History
- ⊠ BLM
- ⊠ BR
- ⊠ Indian Lands
- ⊠ Private
- ⊠ State
- ⊠ USFS

