

OPERATIONS

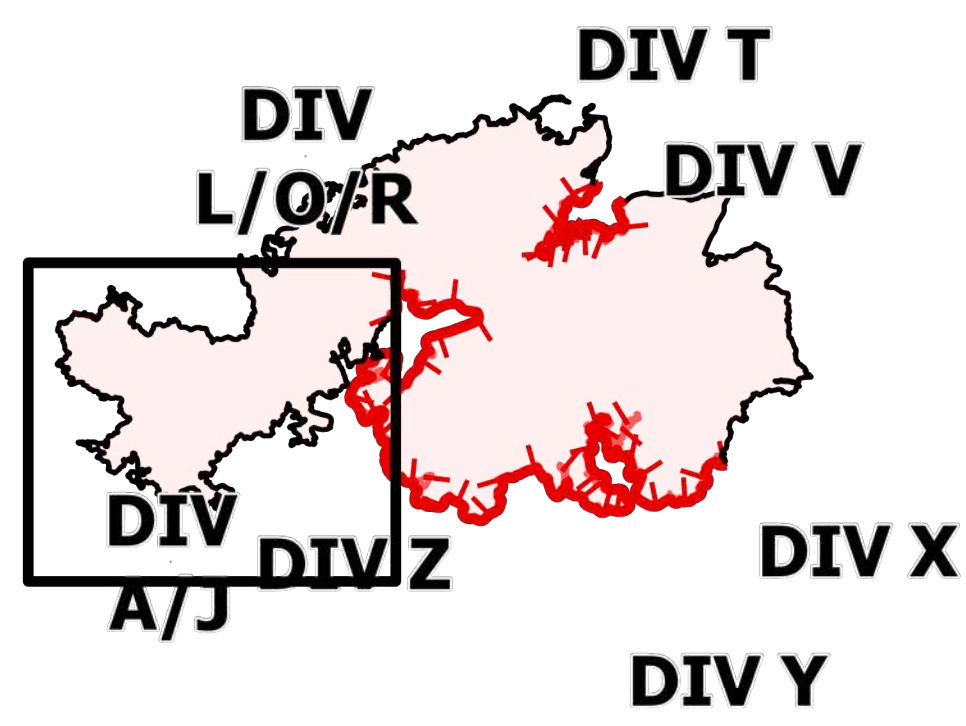
DIV A/J

Telegraph

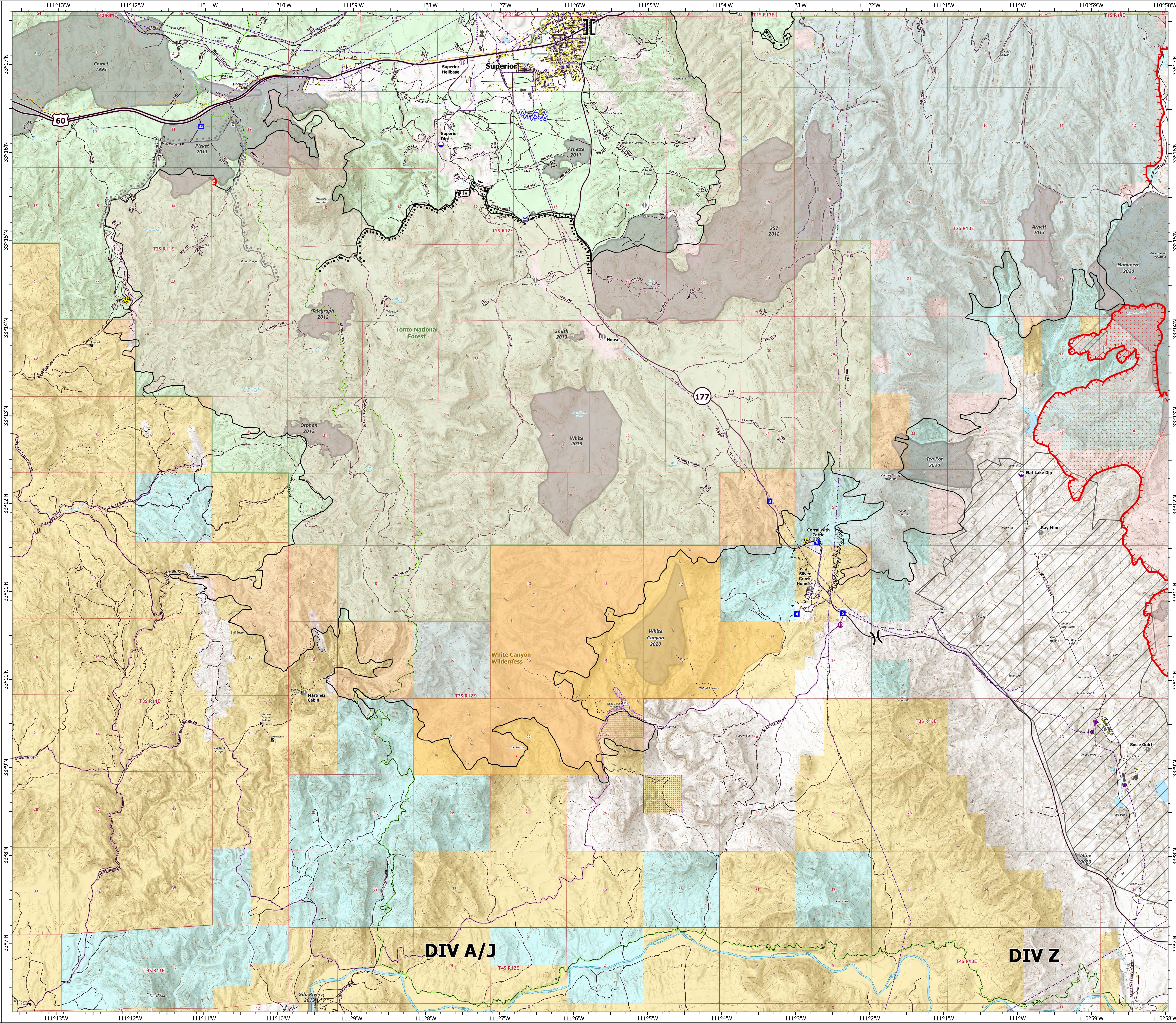
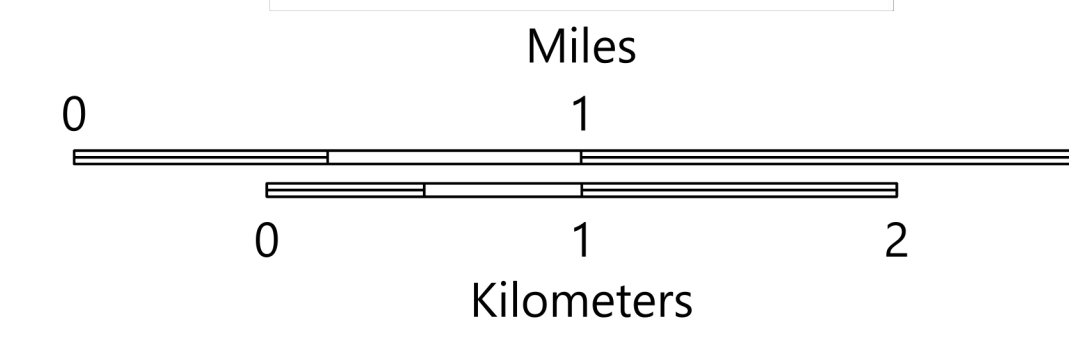
AZ-TNF-1255

6/18/2021

176,122 acres at 6/17/2021 2213 hrs



- Structure
- Substations
- ⊠ Trailhead
- ⊠ BLM Planned Portal Sites
- ⊠ Point of Interest
- ⊠ Trailhead
- Dip Site
- Helispot
- Helibase
- ⊠ Division Break
- ⊠ Branch Break
- Drop Point
- Value at Risk
- Gate
- Safety Zone
- Hazard
- Water Source
- Water Tank
- IR Isolated Heat Source
- Completed Burnout
- MM Completed Fuel Break
- M-H Completed Hand Line
- Planned Burnout
- R-R Planned Road as Line
- Planned Secondary Line
- Fire Edge
- Contained Line
- Area Covered by IR Flight
- IR Heat Perimeter
- IR Intense Heat
- IR Scattered Heat
- Mine Footprint
- Wildfire Daily Fire Perimeter
- Highway or Major Connecting Road
- Local Connecting Road
- Local Road
- Tonto National Forest Roads
- Tonto National Forest Trails
- Road
- Trail
- Arizona Trail
- Middle Gila Access Route
- Transmission Lines
- Oil and Natural Gas Pipelines
- APS Distribution Overhead Infrastructure
- Structure
- USFS Boundary
- County or Equivalent
- BLM Area of Critical Environmental Concern
- Wilderness Area Boundary
- Federal Land within Wilderness Area
- Township/Range
- Section
- Fire History
- BLM
- BR
- Private
- State
- USFS



OPERATIONS

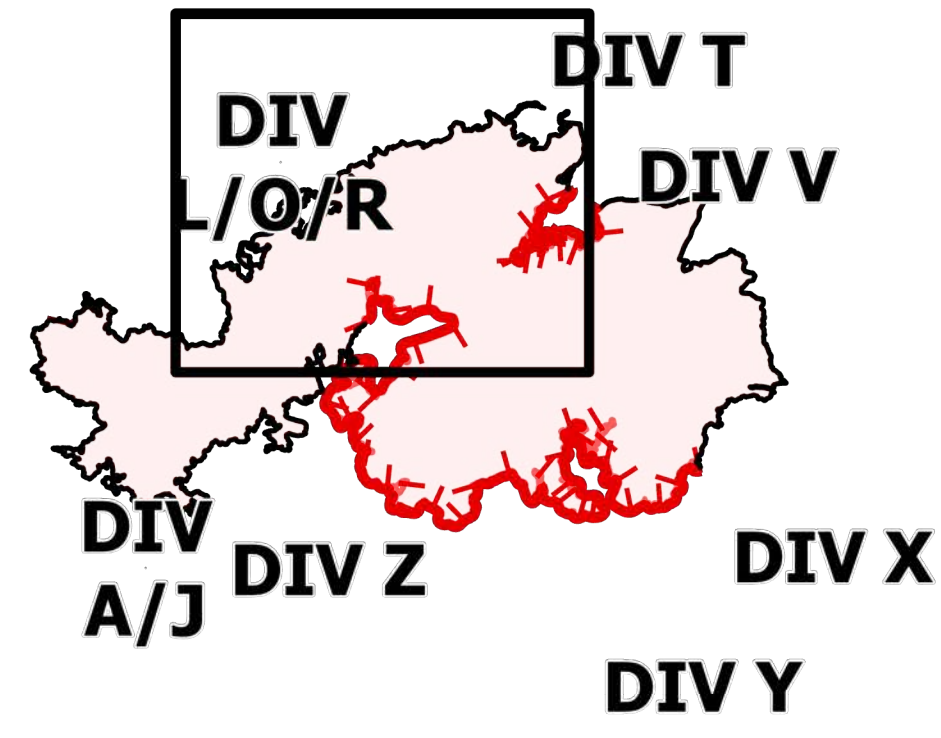
DIV L/O/R

Telegraph

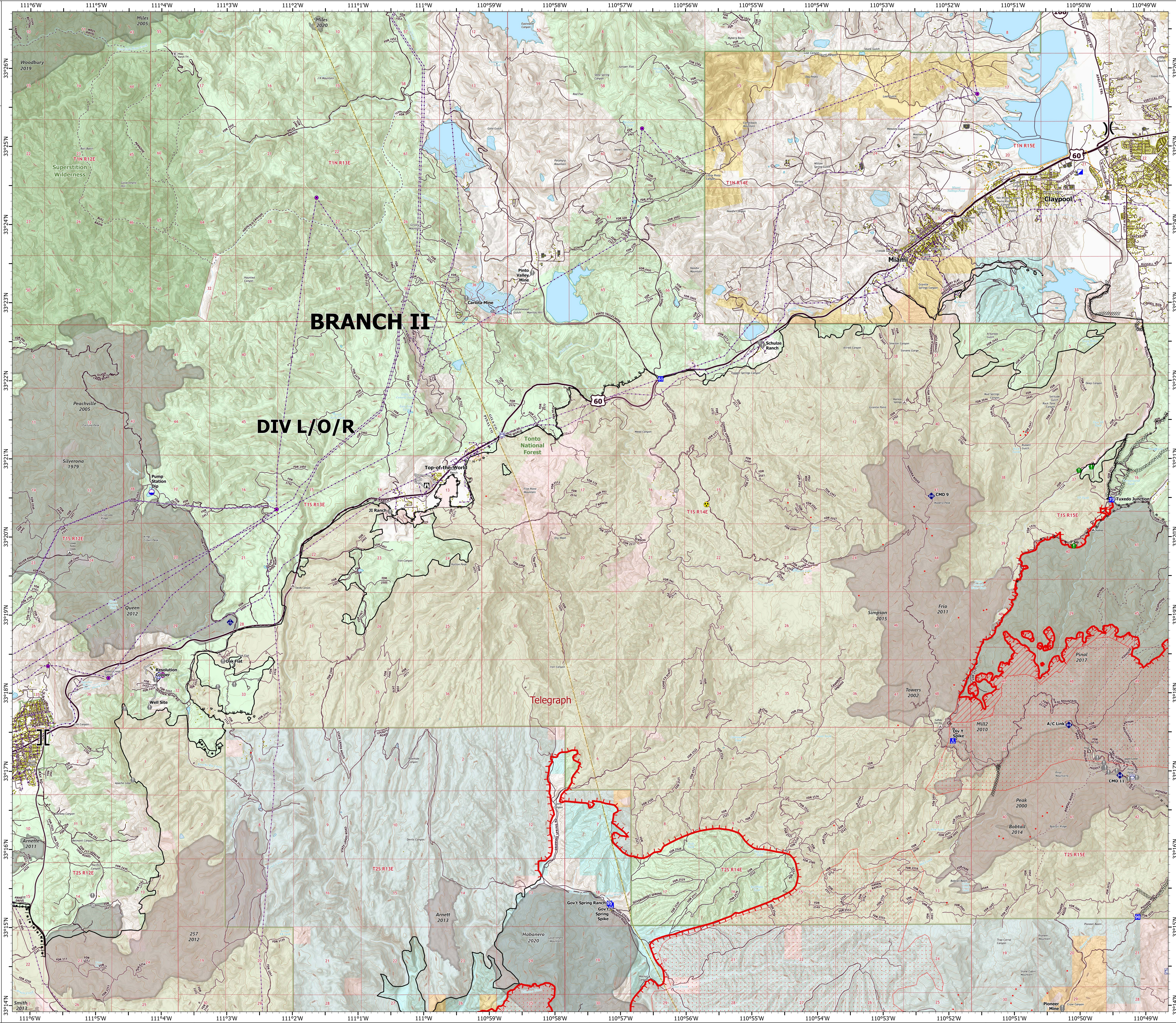
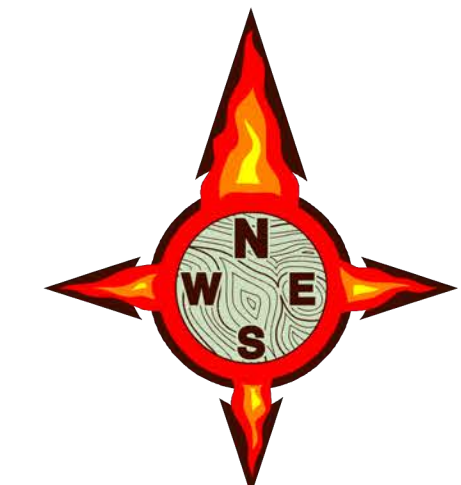
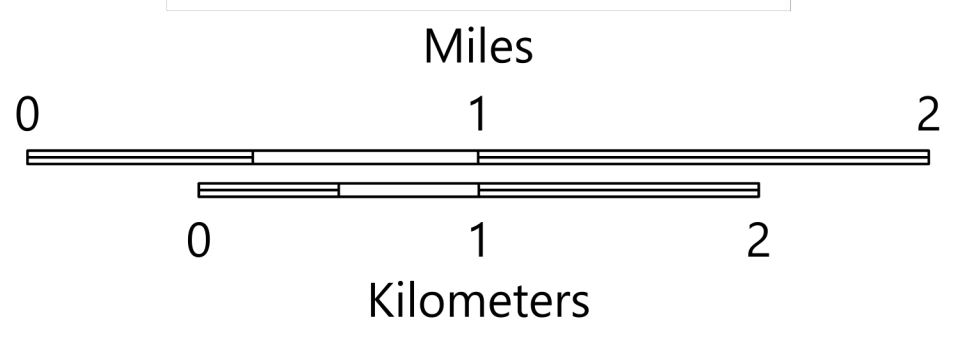
AZ-TNF-1255

6/18/2021

176,122 acres at 6/17/2021 2213 hrs



- Structure
- Substations
- ▲ Campground
- ▲ Recreation Residence
- ⊗ Trailhead
- ⊗ Dip Site
- Helispot
- ⊗ Division Break
- ⊗ Branch Break
- ▲ Incident Command Post
- ▲ Drop Point
- ▲ Camp
- ▲ Lookout
- Value at Risk
- Landmark
- Gate
- Bridge
- Resource Location
- Mobile Weather Unit
- Repeater
- Hazard
- Water Source
- Pump
- Water Tank
- IR Isolated Heat Source
- Completed Burnout
- Completed Dozer Line
- Completed Hand Line
- Completed Mixed Construction Line
- Completed Road as Line
- Planned Road as Line
- Planned Secondary Line
- Access or Improved Road
- Fire Edge
- Contained Line
- Area Covered by IR Flight
- IR Heat Perimeter
- IR Intense Heat
- IR Scattered Heat
- Wildfire Daily Fire Perimeter
- Highway or Major Connecting Road
- Local Connecting Road
- Local Road
- Tonto National Forest Roads
- Tonto National Forest Trails
- Road
- Transmission Lines
- Oil and Natural Gas Pipelines
- APS Distribution Overhead Infrastructure
- Structure
- USFS Boundary
- County or Equivalent
- Township/Range
- Section
- Fire History
- USFS Wilderness Area
- BLM
- Private
- State
- USFS

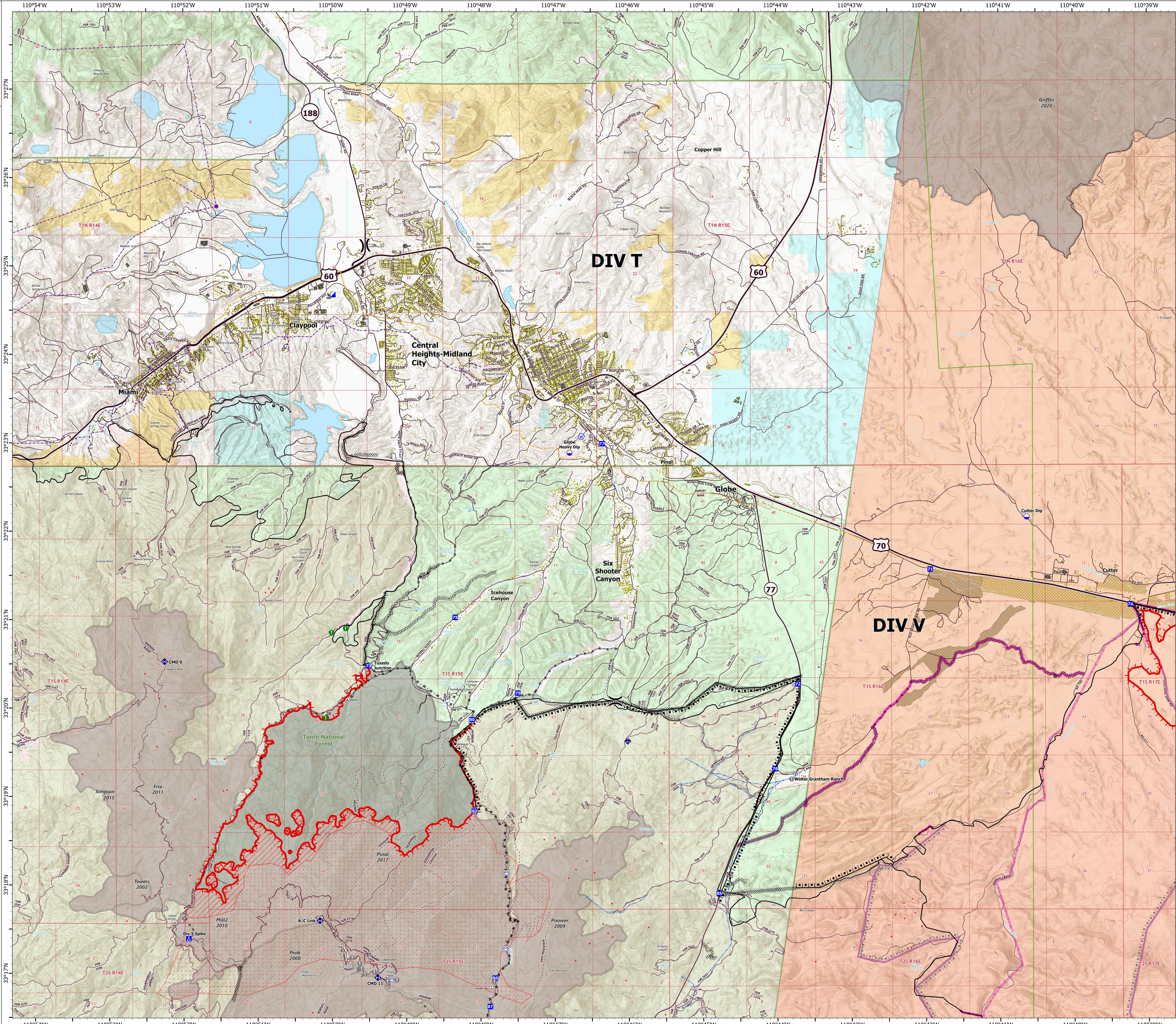
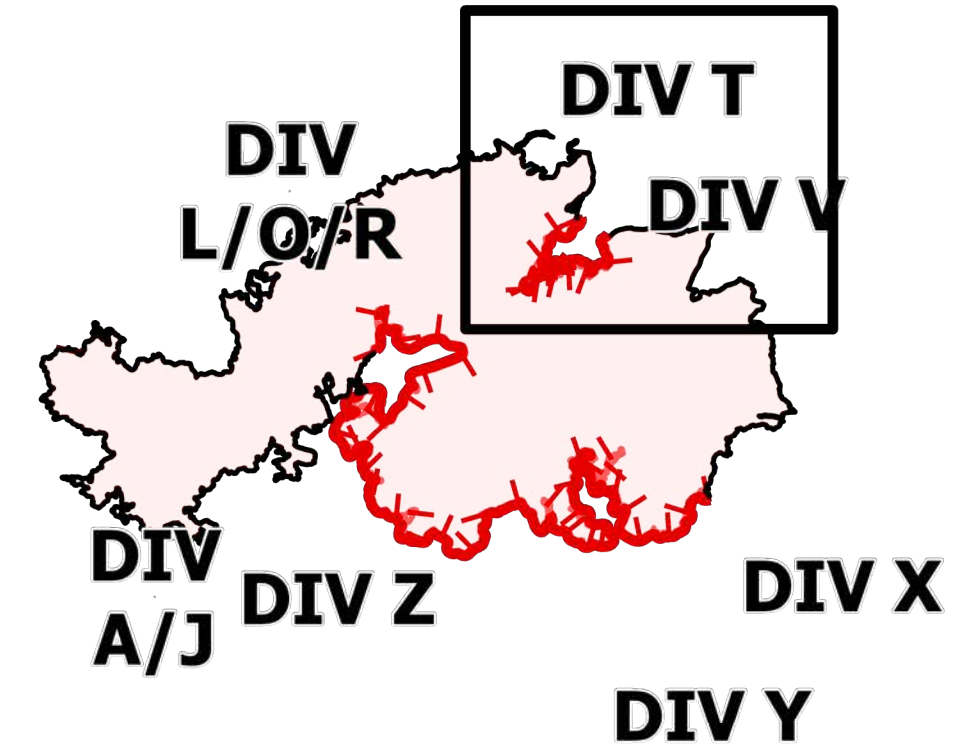


OPERATIONS

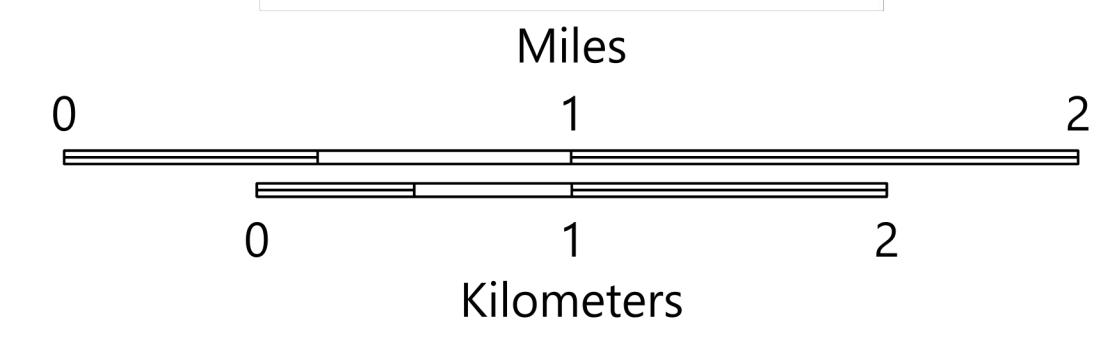
DIV T

Telegraph
AZ-TNF-1255
6/18/2021

176,122 acres at 6/17/2021 2213 hrs



- Structure
- Substations
- Campground
- District Office
- Recreation Residence
- Trailhead
- Dip Site
- Division Break
- Incident Command Post
- Drop Point
- Camp
- Value at Risk
- Landmark
- Bridge
- Resource Location
- Mobile Weather Unit
- Repeater
- Water Source
- Range VAR Point
- Pump
- Water Tank
- IR Isolated Heat Source
- Completed Burnout
- Completed Dozer Line
- Completed Fuel Break
- Completed Hand Line
- Completed Mixed Construction Line
- Completed Road as Line
- Planned Dozer Line
- Planned Road as Line
- Fire Edge
- Contained Line
- Mescal Fire Operational Lines
- Completed Burnout
- Completed Dozer Line
- Completed Hand Line
- Completed Road as Line
- Planned Burnout
- Planned Dozer Line
- Planned Road as Line
- Area Covered by IR Flight
- IR Heat Perimeter
- IR Intense Heat
- IR Scattered Heat
- Wildfire Daily Fire Perimeter
- Highway or Major Connecting Road
- Local Connecting Road
- Local Road
- Tonto National Forest Roads
- Tonto National Forest Trails
- Road
- Transmission Lines
- Oil and Natural Gas Pipelines
- Range VAR Line
- APS Distribution Overhead Infrastructure
- Structure
- USFS Boundary
- County or Equivalent
- Township/Range
- Section
- Fire History
- BLM
- Indian Lands
- Private
- State
- USFS
- 2021 San Carlos Fuels Treatment - Mechanical
- 2021 San Carlos Fuels Treatment - Rx Burn



OPERATIONS

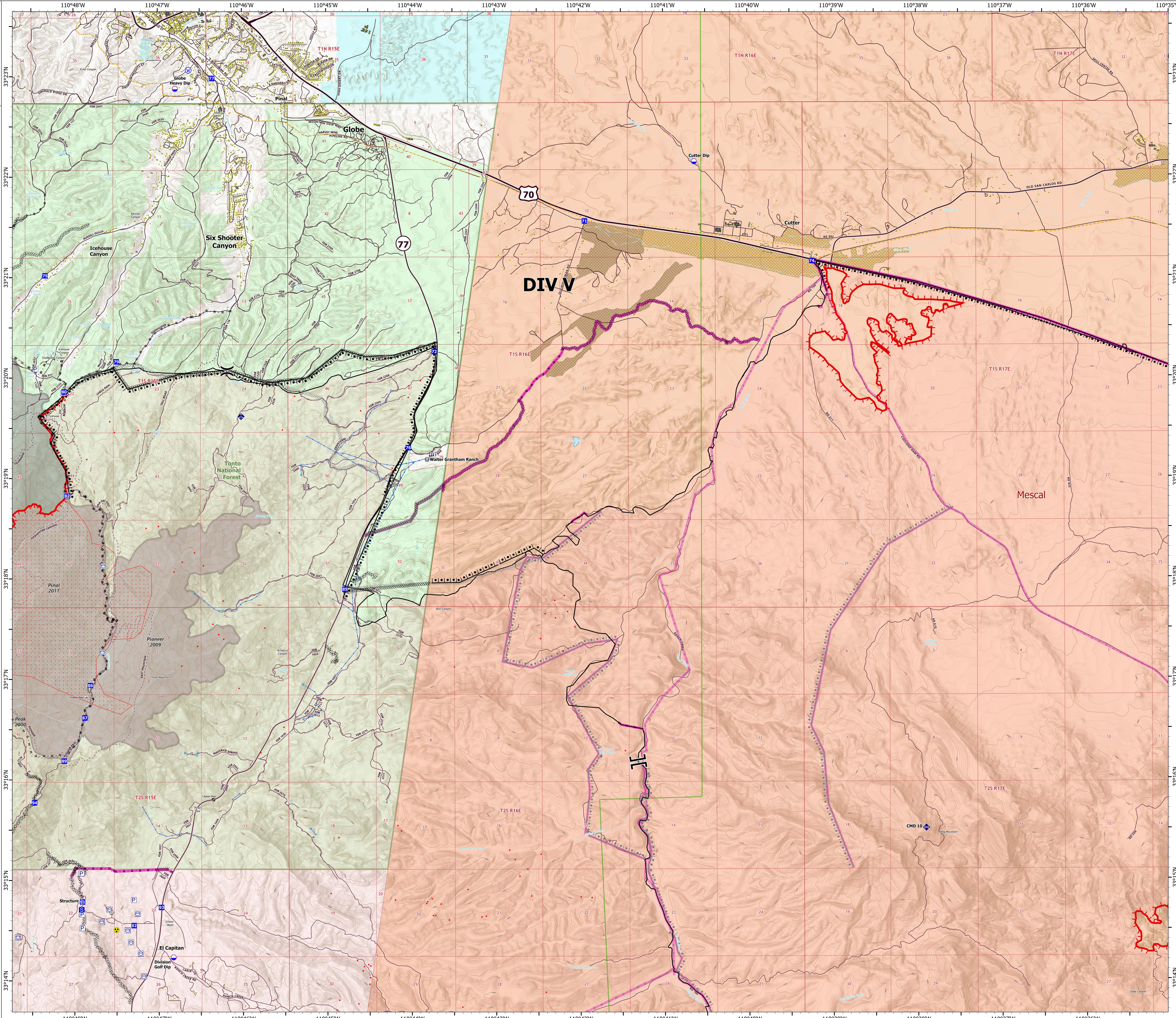
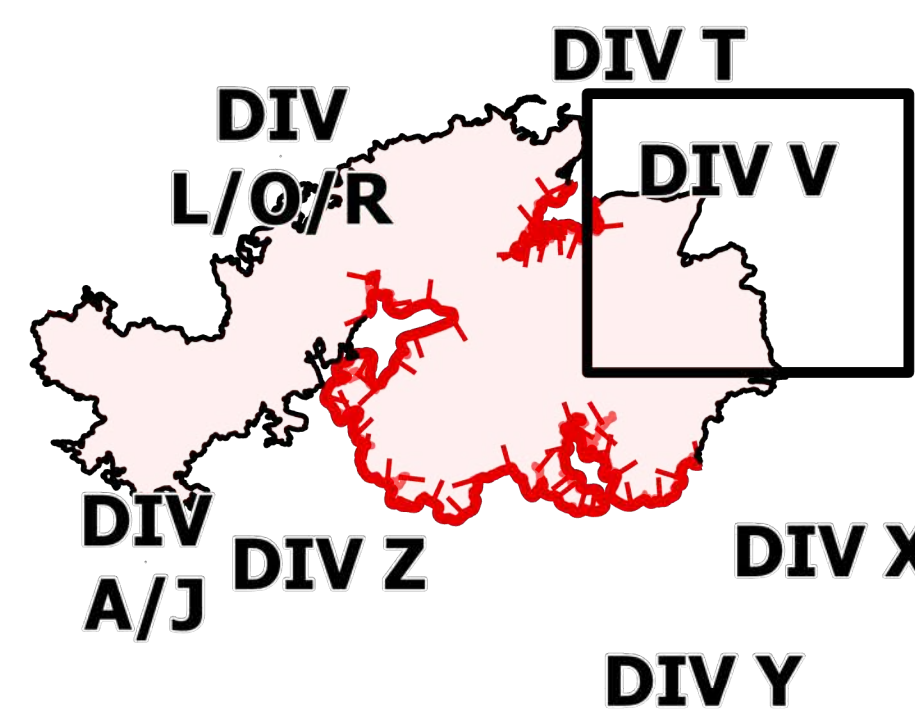
DIV V

Telegraph

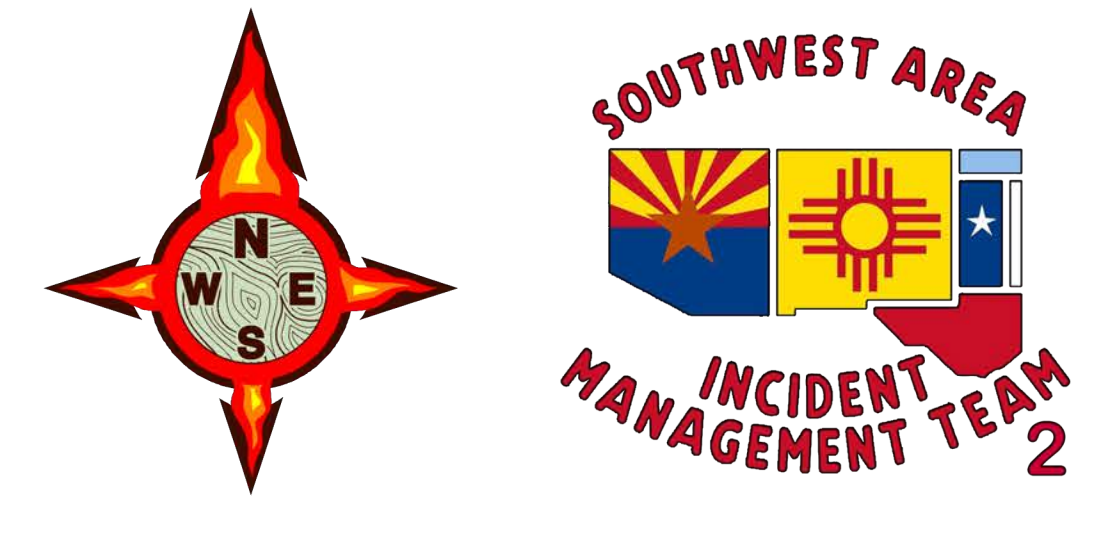
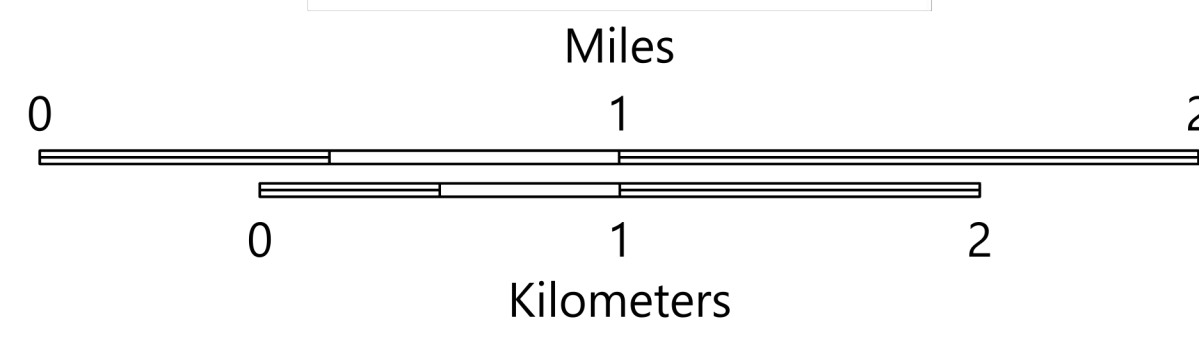
AZ-TNF-1255

6/18/2021

176,122 acres at 6/17/2021 2213 hrs



- Structure
- ▲ Campground
- Ⓜ District Office
- Ⓜ Trailhead
- Ⓜ Other
- Ⓜ Dip Site
- Ⓜ Division Break
- Ⓜ Branch Break
- Ⓜ Drop Point
- Ⓜ Staging Area
- Ⓜ Value at Risk
- Ⓜ Gate
- Ⓜ Bridge
- Ⓜ Mobile Weather Unit
- Ⓜ Repeater
- Ⓜ Hazard
- Ⓜ Water Source
- Ⓜ Range VAR Point
- Ⓜ Pump
- Ⓜ Water Tank
- Ⓜ IR Isolated Heat Source
- Ⓜ Completed Burnout
- Ⓜ Completed Dozer Line
- Ⓜ MW Completed Fuel Break
- Ⓜ H Completed Hand Line
- Ⓜ Completed Mixed Construction Line
- Ⓜ Completed Road as Line
- Ⓜ Planned Dozer Line
- Ⓜ Planned Road as Line
- Ⓜ Fire Edge
- Ⓜ Contained Line
- Mescal Fire Operational Lines
 - Ⓜ Completed Burnout
 - Ⓜ Completed Dozer Line
 - Ⓜ Completed Hand Line
 - Ⓜ Completed Road as Line
 - Ⓜ Planned Burnout
 - Ⓜ Planned Dozer Line
 - Ⓜ Planned Mixed Construction Line
 - Ⓜ Planned Road as Line
- Ⓜ Area Covered by IR Flight
- Ⓜ IR Heat Perimeter
- Ⓜ IR Scattered Heat
- Ⓜ Wildfire Daily Fire Perimeter
- Ⓜ Highway or Major Connecting Road
- Ⓜ Local Connecting Road
- Ⓜ Local Road
- Ⓜ Tonto National Forest Roads
- Ⓜ Tonto National Forest Trails
- Ⓜ Road
- Ⓜ Oil and Natural Gas Pipelines
- Ⓜ Range VAR Line
- Ⓜ APS Distribution Overhead Infrastructure
- Ⓜ Structure
- Ⓜ USFS Boundary
- Ⓜ County or Equivalent
- Ⓜ Township/Range
- Ⓜ Section
- Ⓜ Fire History
- Ⓜ Indian Lands
- Ⓜ Private
- Ⓜ State
- Ⓜ USFS
- Ⓜ 2021 San Carlos Fuels Treatment - Mechanical
- Ⓜ 2021 San Carlos Fuels Treatment - Rx Burn



OPERATIONS

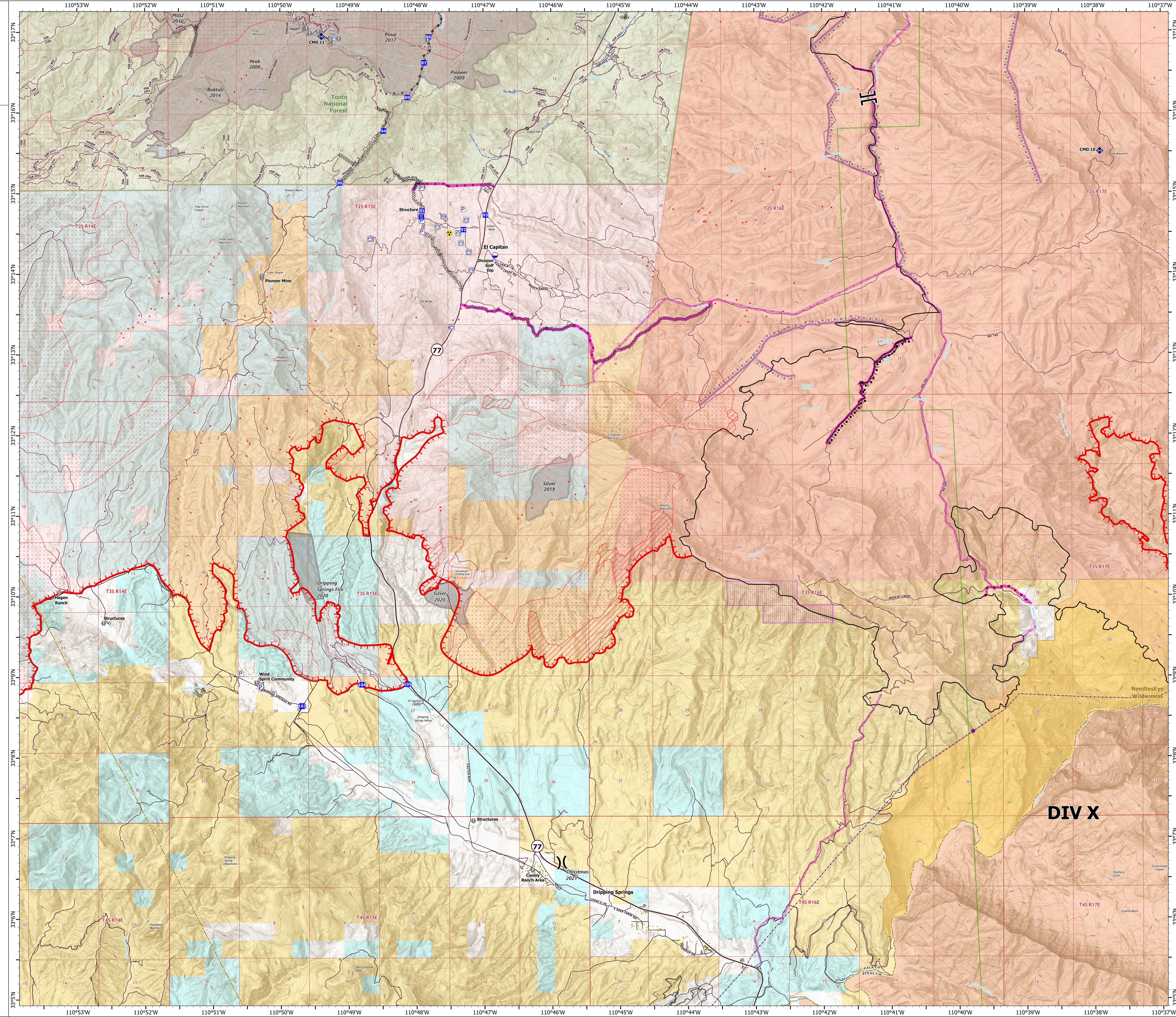
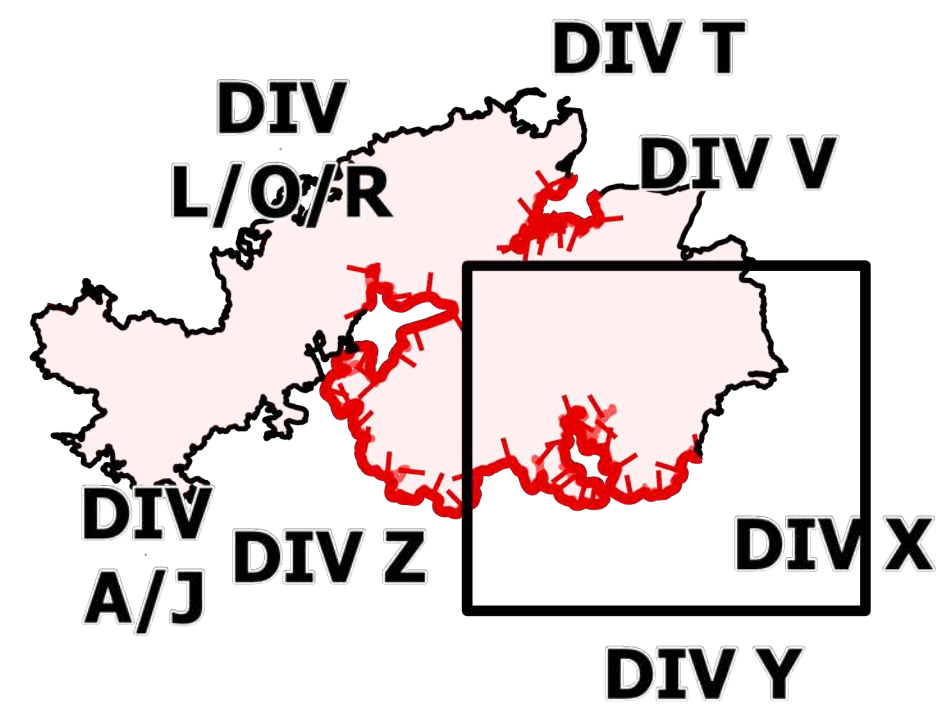
DIV X

Telegraph

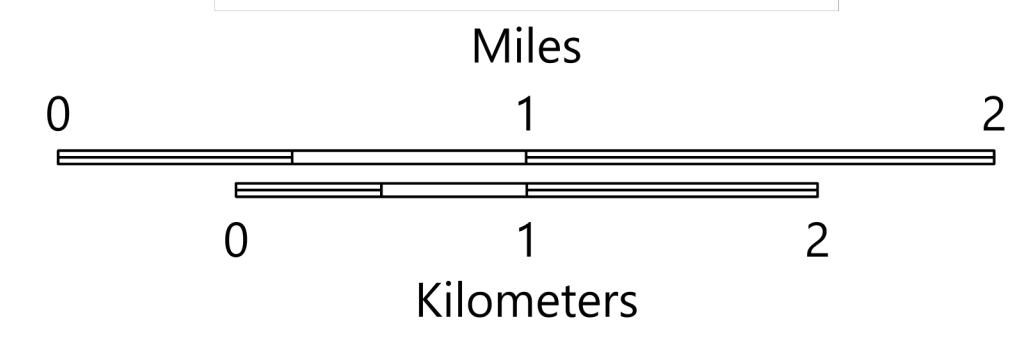
AZ-TNF-1255

6/18/2021

176,122 acres at 6/17/2021 2213 hrs



- Structure
- Substations
- ▲ Campground
- ▲ Recreation Residence
- ▲ Other
- Trailhead
- Dip Site
- Division Break
- Branch Break
- Drop Point
- Staging Area
- Value at Risk
- Gate
- Repeater
- Hazard
- Range VAR Point
- Pump
- Water Tank
- IR Isolated Heat Source
- Completed Dozer Line
- Completed Hand Line
- Completed Mixed Construction Line
- Completed Road as Line
- Planned Dozer Line
- Fire Edge
- Contained Line
- Mescal Fire Operational Lines
- Completed Burnout
- Completed Dozer Line
- Completed Hand Line
- Completed Mixed Construction Line
- Completed Road as Line
- Planned Burnout
- Planned Mixed Construction Line
- Planned Road as Line
- Area Covered by IR Flight
- IR Heat Perimeter
- IR Intense Heat
- IR Scattered Heat
- Mine Footprint
- Wildfire Daily Fire Perimeter
- Local Connecting Road
- Local Road
- Tonto National Forest Roads
- Tonto National Forest Trails
- Road
- Transmission Lines
- Range VAR Line
- Structure
- USFS Boundary
- County or Equivalent
- BLM Area of Critical Environmental Concern
- Wilderness Area Boundary
- Federal Land within Wilderness Area
- Township/Range
- Section
- Fire History
- BLM
- Indian Lands
- Private
- State
- USFS



OPERATIONS

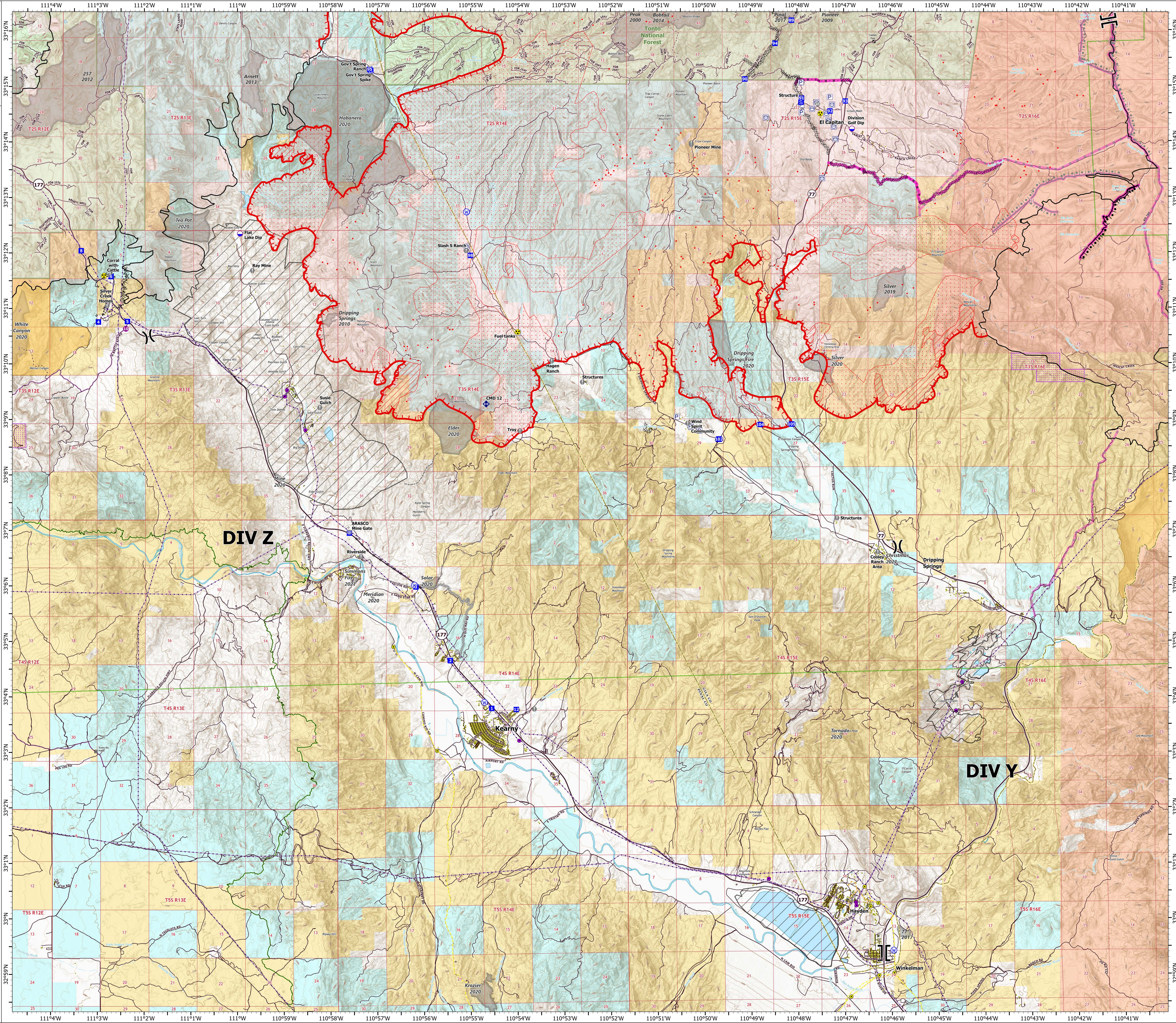
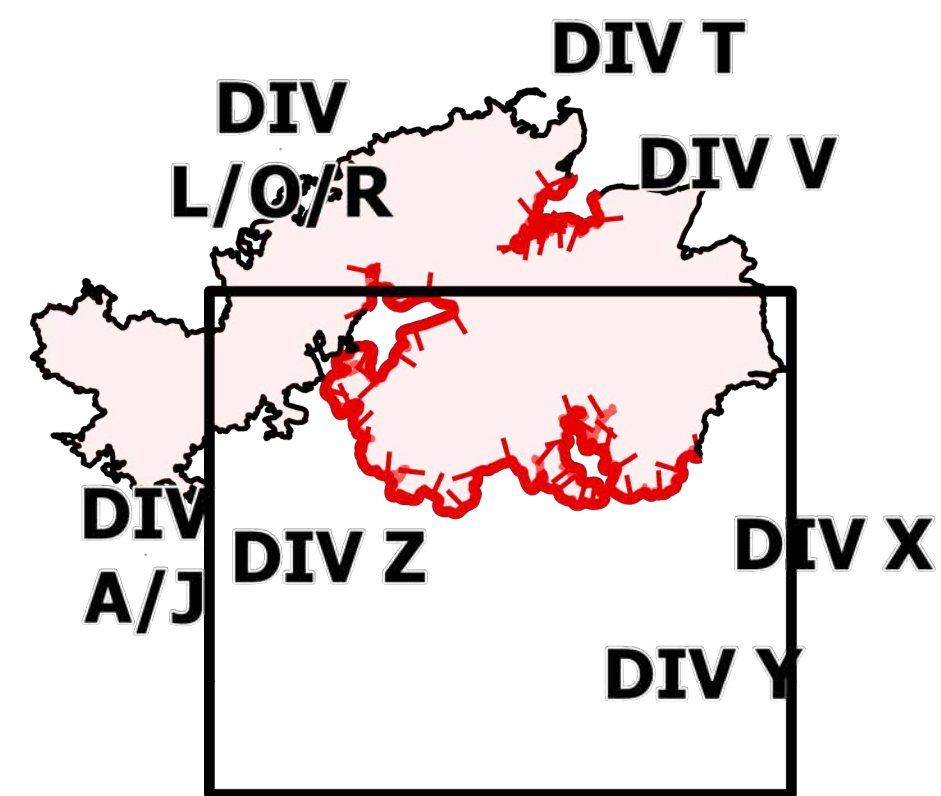
DIV Y/Z

Telegraph

AZ-TNF-1255

6/18/2021

176,122 acres at 6/17/2021 2213 hrs



- Structure
- Substations
- Gas Facility
- Other
- Trailhead
- BLM Planned Portal Sites
- Dip Site
- Helispot
- Division Break
- Branch Break
- Drop Point
- Camp
- Staging Area
- Value at Risk
- Gate
- Repeater
- Hazard
- Water Source
- Other Property
- Pump
- Water Tank
- IR Isolated Heat Source
- Completed Dozer Line
- Completed Fuel Break
- Completed Hand Line
- Completed Mixed Construction Line
- Completed Road as Line
- Planned Dozer Line
- Planned Road as Line
- Planned Secondary Line
- Access or Improved Road
- Other
- Fire Edge
- Contained Line
- Mesal Fire Operational Lines
- Completed Burnout
- Completed Dozer Line
- Completed Hand Line
- Completed Road as Line
- Planned Burnout
- Planned Mixed Construction Line
- Planned Road as Line
- Area Covered by IR Flight
- IR Heat Perimeter
- IR Intense Heat
- IR Scattered Heat
- Mine Footprint
- Wildfire Daily Fire Perimeter
- Local Connecting Road
- Local Road
- Tonto National Forest Roads
- Tonto National Forest Trails
- Road
- Trail
- Arizona Trail
- Middle Gate Access Route
- Transmission Lines
- Gas Line
- Oil and Natural Gas Pipelines
- APS Distribution Overhead Infrastructure
- Structure
- USFS Boundary
- County or Equivalent
- BLM Area of Critical Environmental Concern
- Wilderness Area Boundary
- Federal Land within Wilderness Area
- Township/Range
- Section
- Fire History
- BLM
- IR
- Indian Lands
- Private
- State
- USFS

