

# OPERATIONS

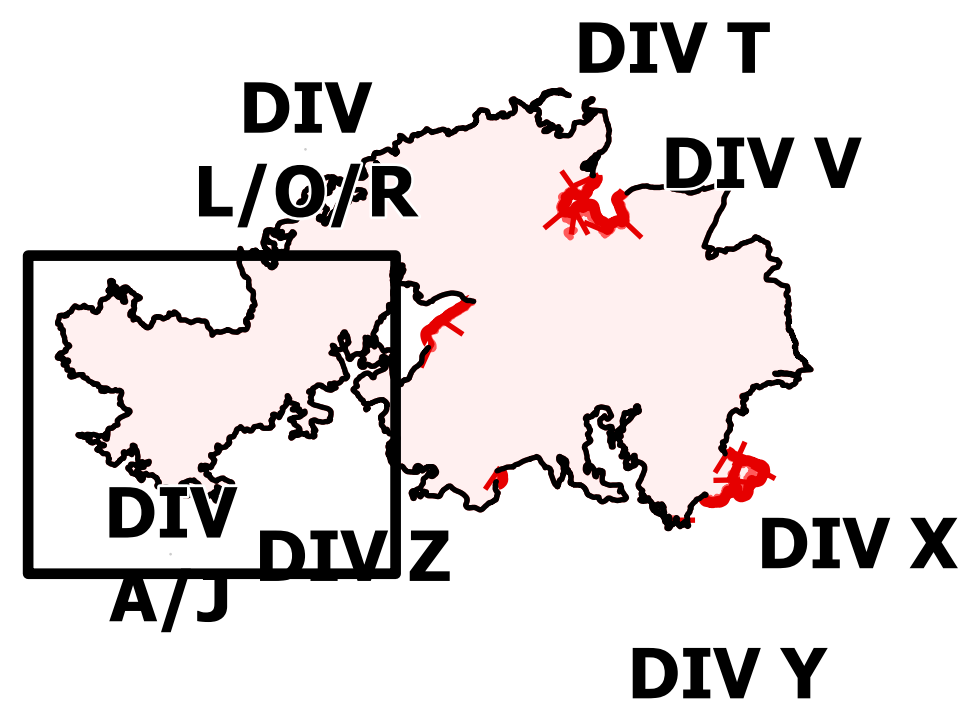
DIV A/J

Telegraph

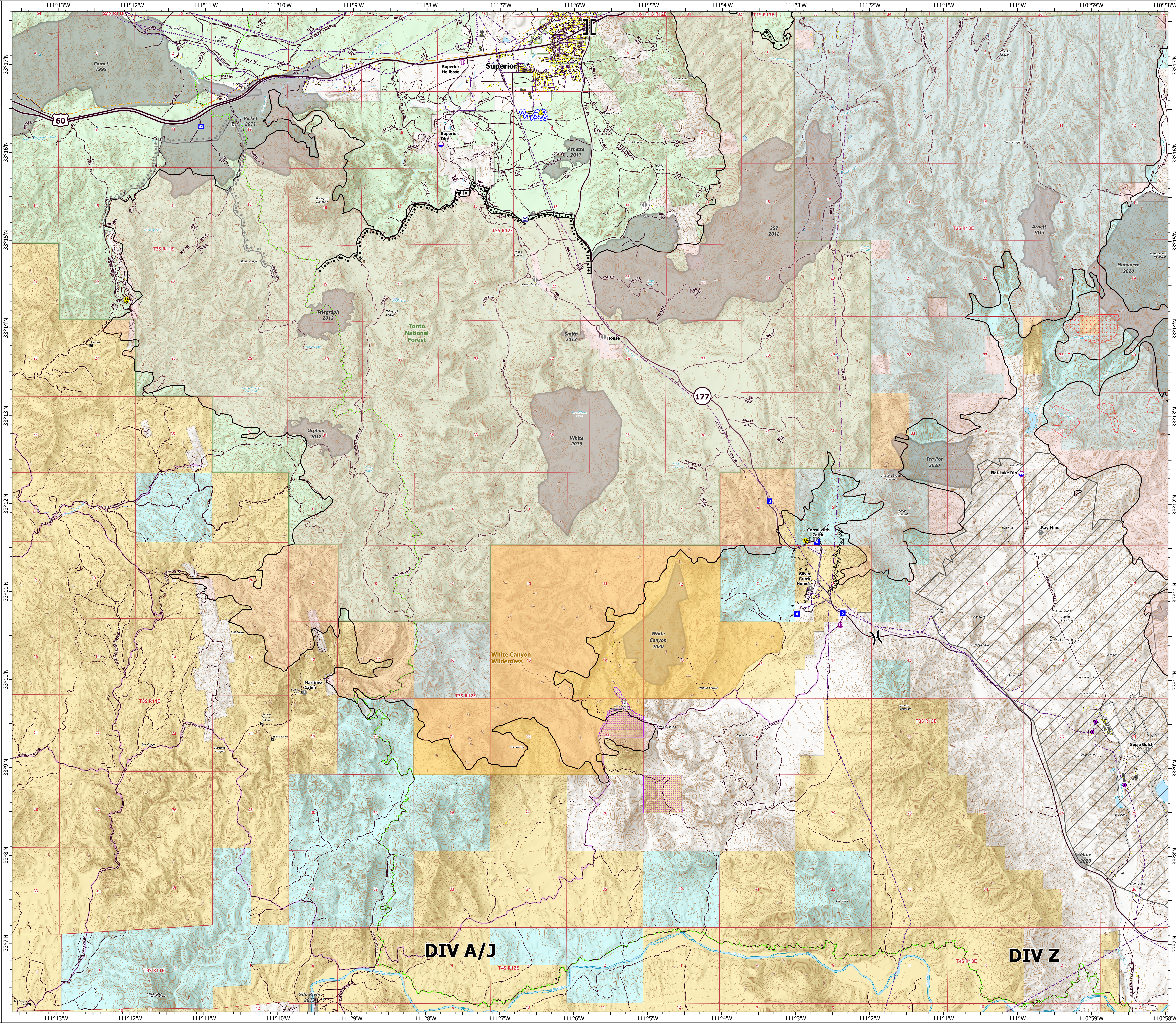
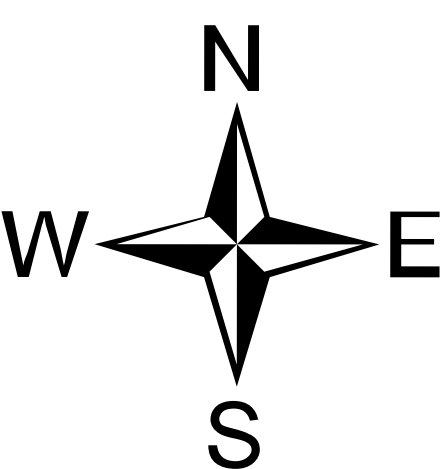
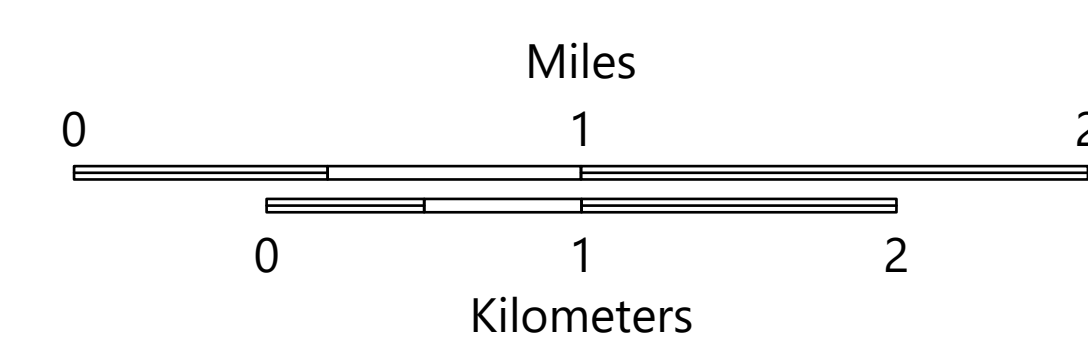
AZ-TNF-1255

6/22/2021

180,685 acres at 6/21/2021 0106 hrs



- Structure
- Substations
- Trailhead
- BLM Planned Portal Sites
- Point of Interest
- Dip Site
- Helispot
- Helibase
- ⌋ Division Break
- ⌋ Branch Break
- Drop Point
- Value at Risk
- Gate
- Safety Zone
- Hazard
- Water Source
- Water Tank
- IR Isolated Heat Source
- Completed Burnout
- Completed Fuel Break
- Completed Hand Line
- Planned Burnout
- Planned Road as Line
- Planned Secondary Line
- Access or Improved Road
- Contained Line
- IR Heat Perimeter
- IR Scattered Heat
- Mine Footprint
- Wildfire Daily Fire Perimeter
- Highway or Major Connecting Road
- Local Connecting Road
- Local Road
- Tonto National Forest Roads
- Tonto National Forest Trails
- Road
- Trail
- Arizona Trail
- Middle Gila Access Route
- Transmission Lines
- Oil and Natural Gas Pipelines
- APS Distribution Overhead Infrastructure
- Structure
- USFS Boundary
- County or Equivalent
- BLM Area of Critical Environmental Concern
- Wilderness Area Boundary
- Federal Land within Wilderness Area
- Township/Range
- Section
- Fire History
- BLM
- BR
- Private
- State
- USFS



DIV A/J

DIV Z