

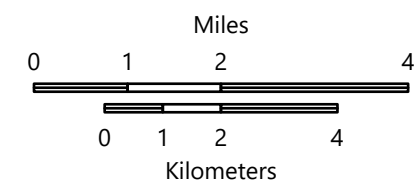
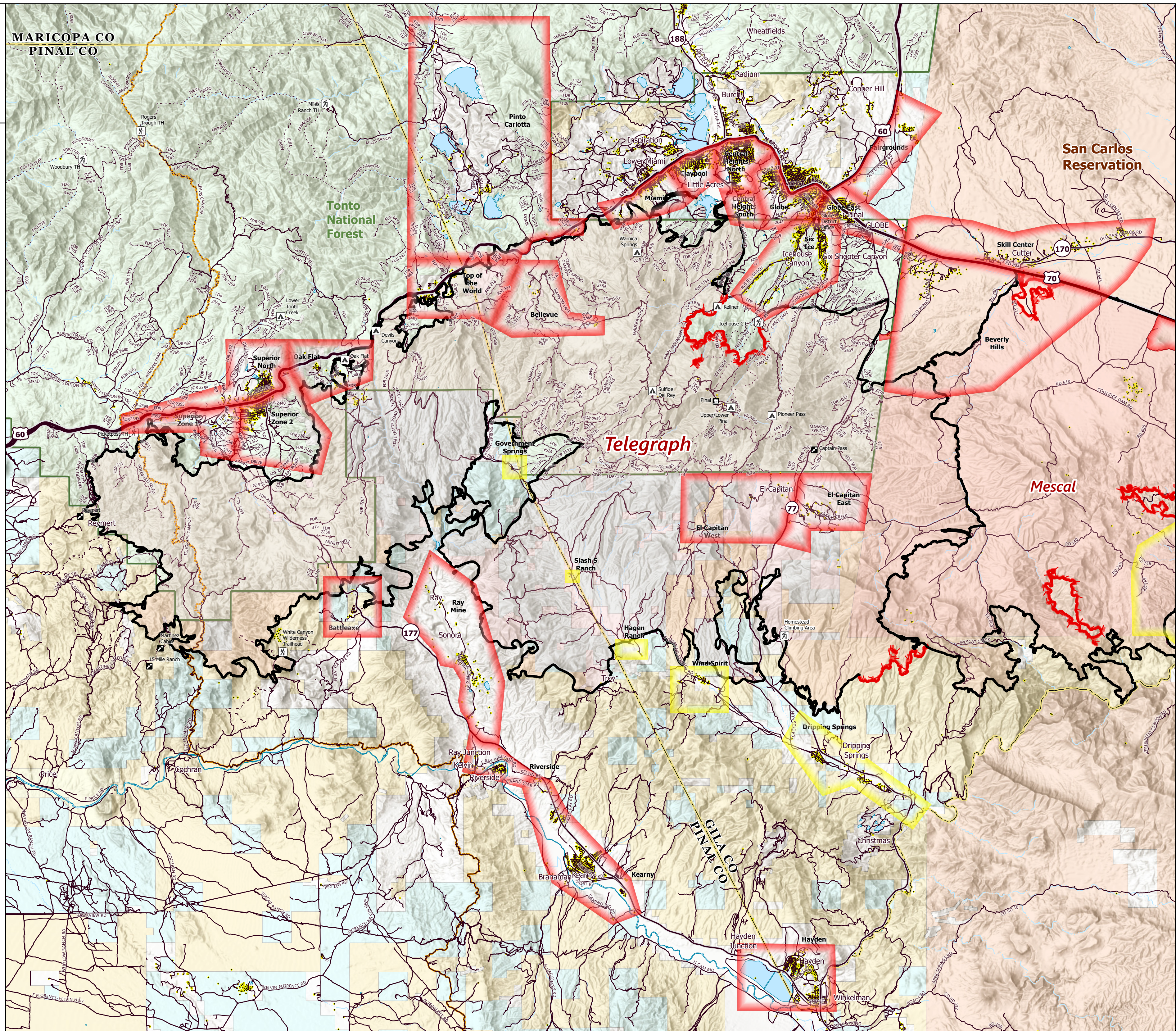
EVACUATIONS

Telegraph
AZ-TNF-1255
6/24/2021

180,725 acres at 6/21/21 10:26 pm

Evacuation Status (Ready, Set, Go!)

- GO!
- Set
- Ready
- Campground
- District Office
- Recreation Residence
- Trailhead
- Other
- Fire Edge
- Contained Line
- Wildfire Daily Fire Perimeter
- Highway or Major Connecting Road
- Local Connecting Road
- Local Road
- Trail
- Arizona Trail
- Structure
- USFS Boundary
- County
- Bureau of Land Management
- Bureau of Reclamation
- Indian Lands
- Private
- State
- US Forest Service



1:130,000 - PNW6 - CKA - 6/24/2021 0005
Acres from GIS
North American 1983 Datum, LatLong Grid