

PILOT

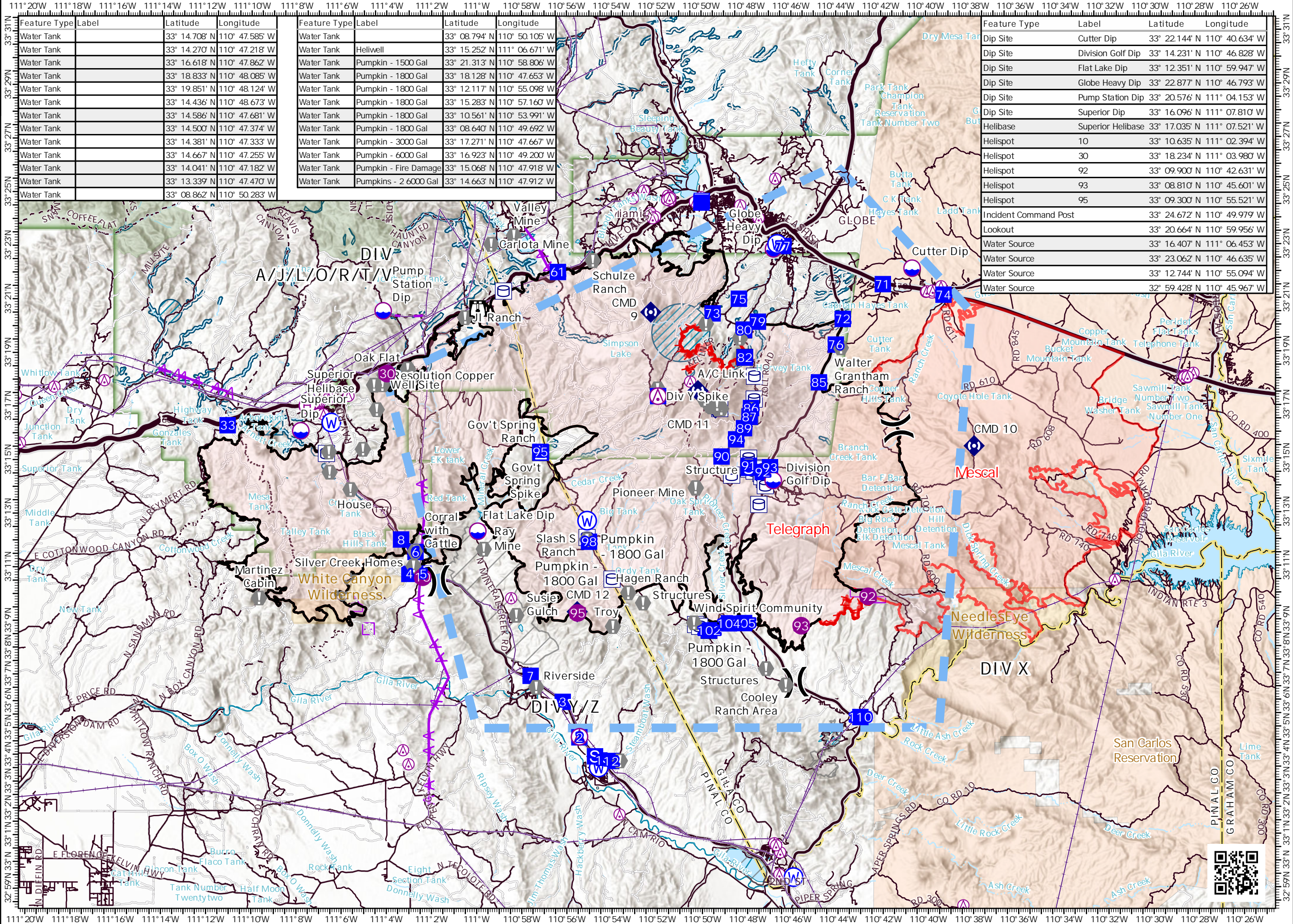
Telegraph
AZ-TNF-1255
6/24/2021

180,725 acres at 6/21/2021 2226 hrs

- Aerial Hazard
- Dip Site
- Helispot
- Helibase
- Division Break
- Incident Command Post
- Drop Point
- Camp
- Staging Area
- Lookout
- Value at Risk
- Repeater
- Water Source
- Water Tank
- Aerial Hazard
- Temporary Flight Restriction
- Fire Edge
- Contained Line
- Transmission Lines
- Mine Footprint
- Wildfire Daily Fire Perimeter
- Tonto National Forest Roads
- Tonto National Forest Trails
- County or Equivalent
- BLM Area of Critical Environmental Concern
- Wilderness Area Boundary
- Federal Land within Wilderness Area
- USFS Wilderness Area
- Retardant Avoidance
- County
- Indian Lands



1:240,000 - PNW IMT6 - CKA - 6/23/2021 2211
Acres from IR
North American 1983 Datum, Lat/Long Grid



Feature Type	Label	Latitude	Longitude
Water Tank		33° 14.708' N	110° 47.585' W
Water Tank		33° 14.270' N	110° 47.218' W
Water Tank		33° 16.618' N	110° 47.862' W
Water Tank		33° 18.833' N	110° 48.085' W
Water Tank		33° 19.851' N	110° 48.124' W
Water Tank		33° 14.436' N	110° 48.673' W
Water Tank		33° 14.586' N	110° 47.681' W
Water Tank		33° 14.500' N	110° 47.374' W
Water Tank		33° 14.381' N	110° 47.333' W
Water Tank		33° 14.667' N	110° 47.255' W
Water Tank		33° 14.041' N	110° 47.182' W
Water Tank		33° 13.339' N	110° 47.470' W
Water Tank		33° 08.862' N	110° 50.283' W

Feature Type	Label	Latitude	Longitude
Water Tank		33° 08.794' N	110° 50.105' W
Water Tank	Heliwell	33° 15.252' N	111° 06.671' W
Water Tank	Pumpkin - 1500 Gal	33° 21.313' N	110° 58.806' W
Water Tank	Pumpkin - 1800 Gal	33° 18.128' N	110° 47.653' W
Water Tank	Pumpkin - 1800 Gal	33° 12.117' N	110° 55.098' W
Water Tank	Pumpkin - 1800 Gal	33° 15.283' N	110° 57.160' W
Water Tank	Pumpkin - 1800 Gal	33° 10.561' N	110° 53.991' W
Water Tank	Pumpkin - 1800 Gal	33° 08.640' N	110° 49.692' W
Water Tank	Pumpkin - 3000 Gal	33° 17.271' N	110° 47.667' W
Water Tank	Pumpkin - 6000 Gal	33° 16.923' N	110° 49.200' W
Water Tank	Pumpkin - Fire Damage	33° 15.068' N	110° 47.918' W
Water Tank	Pumpkins - 2 6000 Gal	33° 14.663' N	110° 47.912' W

Feature Type	Label	Latitude	Longitude
Dip Site	Cutter Dip	33° 22.144' N	110° 40.634' W
Dip Site	Division Golf Dip	33° 14.231' N	110° 46.828' W
Dip Site	Flat Lake Dip	33° 12.351' N	110° 59.947' W
Dip Site	Globe Heavy Dip	33° 22.877' N	110° 46.793' W
Dip Site	Pump Station Dip	33° 20.576' N	111° 04.153' W
Dip Site	Superior Dip	33° 16.096' N	111° 07.810' W
Helibase	Superior Helibase	33° 17.035' N	111° 07.521' W
Helispot	10	33° 10.635' N	111° 02.394' W
Helispot	30	33° 18.234' N	111° 03.980' W
Helispot	92	33° 09.900' N	110° 42.631' W
Helispot	93	33° 08.810' N	110° 45.601' W
Helispot	95	33° 09.300' N	110° 55.521' W
Incident Command Post		33° 24.672' N	110° 49.979' W
Lookout		33° 20.664' N	110° 59.956' W
Water Source		33° 16.407' N	111° 06.453' W
Water Source		33° 23.062' N	110° 46.635' W
Water Source		33° 12.744' N	110° 55.094' W
Water Source		32° 59.428' N	110° 45.967' W

