

SUPPRESSION

REPAIR

Telegraph
AZ-TNF-1255
6/25/2021

180,753 acres at 6/25/2021 01:28 hrs

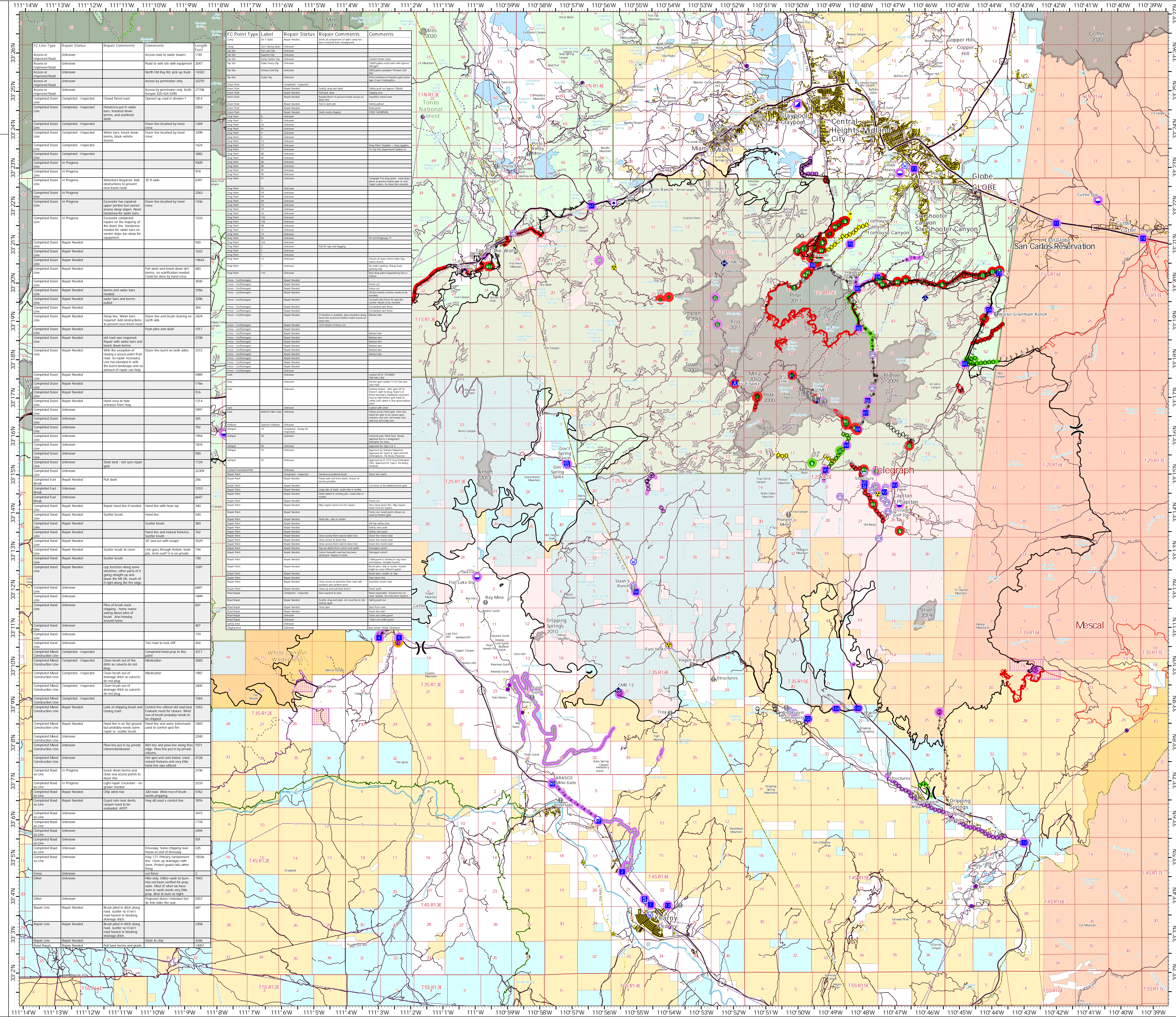
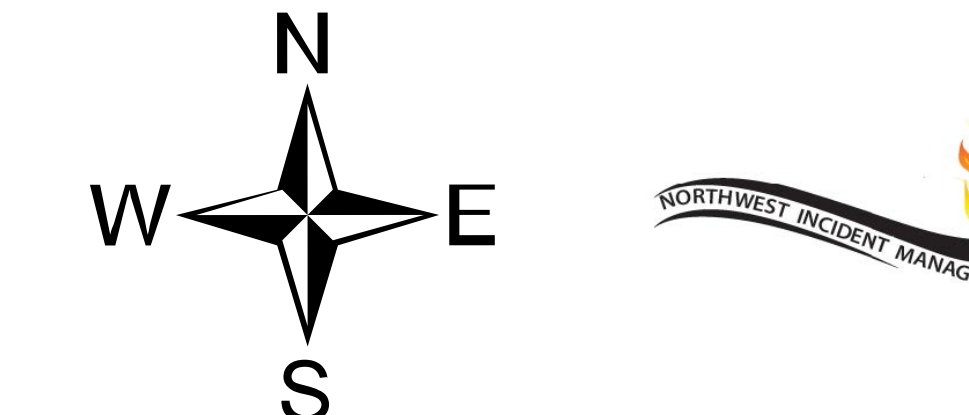
- Completed - Inspected
- Completed - Ready for Inspection
- Repair Needed
- Unknown

Repair Status Line

- Completed - Inspected
- In Progress
- Repair Needed
- Unknown

- Structure
- Substations
- Gas Facility
- Other Property
- Water Tank
- Dip Site
- Helispot
- Helibase
- Division Break
- Incident Command Post
- Drop Point
- Camp
- Staging Area
- Lookout
- Value at Risk
- Landmark
- Gate
- Bridge
- Road Repair
- Resource Location
- Repair Point
- Fence - Cut/Damaged
- Dozer Push
- Mobile Weather Unit
- Repeater
- Safety Zone
- Hazard
- Water Source
- Completed Burnout
- Completed Dozer Line
- Completed Fuel Break
- Completed Hand Line
- Completed Mixed Construction Line
- Completed Road as Line
- Access or Improved Road
- Other
- Road Repair
- Fire Edge
- Contained Line
- Other
- Wildfire Daily Fire Perimeter
- Road
- Trail
- Arizona Trail
- Middle Gila Access Route
- APS Distribution Overhead Infrastructure
- Gas Line
- Oil and Natural Gas Pipelines
- Transmission Lines
- County or Equivalent
- Township/Range
- Section
- BLM
- BR
- Indian Lands
- Private
- State
- USFS
- Wilderness Area Boundary
- Federal Land within Wilderness Area
- BLM Area of Critical Environmental Concern
- Fire History
- USFS Wilderness Area

0 2 4 Miles
0 2 4 Kilometers



FC Line Type	Repair Status	Repair Comments	Comments	Length Feet
Access or Improved Road	Unknown	Access road to water towers		1181
Access or Improved Road	Unknown	Road to well site with equipment		2047
Access or Improved Road	Unknown	North Old Day Rd pick up truck		14322
Access or Improved Road	Unknown	Access by permission only		2270
Access or Improved Road	Unknown	Access by permission only		2708
Completed Dozer Line	Completed - Inspected	Closed forest road		5814
Completed Dozer Line	Completed - Inspected	Handover put in water bars, hooked down berm, and scattered slash		1902
Completed Dozer Line	Completed - Inspected	Dozer line brushed by hand crew		1369
Completed Dozer Line	Completed - Inspected	Water bars, knock down berm, stock water access		3298
Completed Dozer Line	Completed - Inspected	Dozer line brushed by hand crew		1624
Completed Dozer Line	Completed - Inspected	Dozer line brushed by hand crew		3482
Completed Dozer Line	In Progress			9309
Completed Dozer Line	In Progress			918
Completed Dozer Line	In Progress	Waterbars Required. Add waterbars to 25 ft wide road travel route		6397
Completed Dozer Line	In Progress			2263
Completed Dozer Line	In Progress	Excavator has repaired upper portion but cannot access steep slopes. Need handover to water bars		1436
Completed Dozer Line	In Progress	Excavator completed repair to the majority of the slope line. Handover needed for water bars on wester slope too steep for equipment		1533
Completed Dozer Line	Repair Needed			920
Completed Dozer Line	Repair Needed			1622
Completed Dozer Line	Repair Needed			19043
Completed Dozer Line	Repair Needed	Full slash and knock down dirt berm. no excavation needed. Dozer to follow by hand crew		683
Completed Dozer Line	Repair Needed	Berms and water bars needed		3540
Completed Dozer Line	Repair Needed	Water bars and berms pulled		3396
Completed Dozer Line	Repair Needed			394
Completed Dozer Line	Repair Needed	Steep line. Water bars required. Add waterbars to prevent new travel route		2424
Completed Dozer Line	Repair Needed	Flush piles and slash		1073
Completed Dozer Line	Repair Needed	All road was inspected. Repair with water bars and knock down berm		2388
Completed Dozer Line	Repair Needed	With the exception of brush along access point from road, no repair necessary. Line has been cleared with the burn landscape and no amount of repair can help		2372
Completed Dozer Line	Repair Needed			9989
Completed Dozer Line	Repair Needed			1766
Completed Dozer Line	Repair Needed	Hand crew to high entrance from How		1214
Completed Dozer Line	Unknown			5977
Completed Dozer Line	Unknown			265
Completed Dozer Line	Unknown			1904
Completed Dozer Line	Unknown			1876
Completed Dozer Line	Unknown			500
Completed Dozer Line	Unknown	State land - not sure repair gait		1324
Completed Dozer Line	Unknown			2239
Completed Dozer Line	Repair Needed	Full slash		256
Completed Fuel Break	Unknown			1010
Completed Fuel Break	Unknown			6647
Completed Hand Line	Repair Needed	Repair hand line if needed		340
Completed Hand Line	Repair Needed	Scatter brush		540
Completed Hand Line	Repair Needed	Scatter brush		863
Completed Hand Line	Repair Needed	Hand line and natural features. Scatter brush		762
Completed Hand Line	Repair Needed	25' saw cut with scrape		5529
Completed Hand Line	Repair Needed	Scatter brush to cover gaps through network brush pile. slash through to top of brush		194
Completed Hand Line	Repair Needed	Scatter brush		156
Completed Hand Line	Repair Needed	cap trenches along some berms. other parts of it going straight up and down the hill. Do most of it right along the fire edge		1697
Completed Hand Line	Unknown			6687
Completed Hand Line	Unknown			1899
Completed Hand Line	Unknown			857
Completed Hand Line	Unknown			407
Completed Hand Line	Unknown			770
Completed Hand Line	Unknown			454
Completed Mixed Construction Line	Completed - Inspected	Clean brush out of the ditch so culverts do not plug		3983
Completed Mixed Construction Line	Completed - Inspected	Clean brush out of drainage ditch so culverts do not plug		2467
Completed Mixed Construction Line	Completed - Inspected	Clean brush out of drainage ditch so culverts do not plug		1985
Completed Mixed Construction Line	Completed - Inspected	Clean brush out of drainage ditch so culverts do not plug		1594
Completed Mixed Construction Line	Repair Needed	Look at chipping brush and clearing road		1653
Completed Mixed Construction Line	Repair Needed	Hand line is on flat ground but probably needs some repair to scatter brush		2483
Completed Mixed Construction Line	Unknown			2240
Completed Mixed Construction Line	Unknown	Row line put in by private citizen/landowner		1071
Completed Mixed Construction Line	Unknown	Hot spot and cool trail. Used heavy brush and very little slash. Hand line was utilized		4728
Completed Road as Line	In Progress	Knock down berm and close any access points to access the road		2106
Completed Road as Line	Repair Needed	light repair. Excavator - no grade needed		2233
Completed Road as Line	Repair Needed	Chip wind row		5762
Completed Road as Line	Repair Needed	Guard rails near debris canyon need to be installed. About		7876
Completed Road as Line	Unknown			3415
Completed Road as Line	Unknown			1778
Completed Road as Line	Unknown			2494
Completed Road as Line	Unknown			921
Completed Road as Line	Unknown			625
Completed Road as Line	Unknown	Driveway. Some chipping near house at end of driveway		10026
Completed Road as Line	Unknown	May 177. Heavy containment line. Clean up drainage with some. Protect guard rails when firing		2
Other	Unknown	cut slope		1843
Other	Unknown	Wet only. Utilities wash to burn. Has not been worked for prep work. Most of what we have seen in wash needs very little prep. Best to burn at night		5567
Repair Line	Repair Needed	Brush piled in ditch along road. scatter so that road hazard or blocking drainage ditch		687
Repair Line	Repair Needed	Brush piled in ditch along road. scatter so that road hazard or blocking drainage ditch		2398
Repair Line	Repair Needed	Slash to chip		4346
Road Repair	Repair Needed	Full back berm and grade		1497