

SUPPRESSION

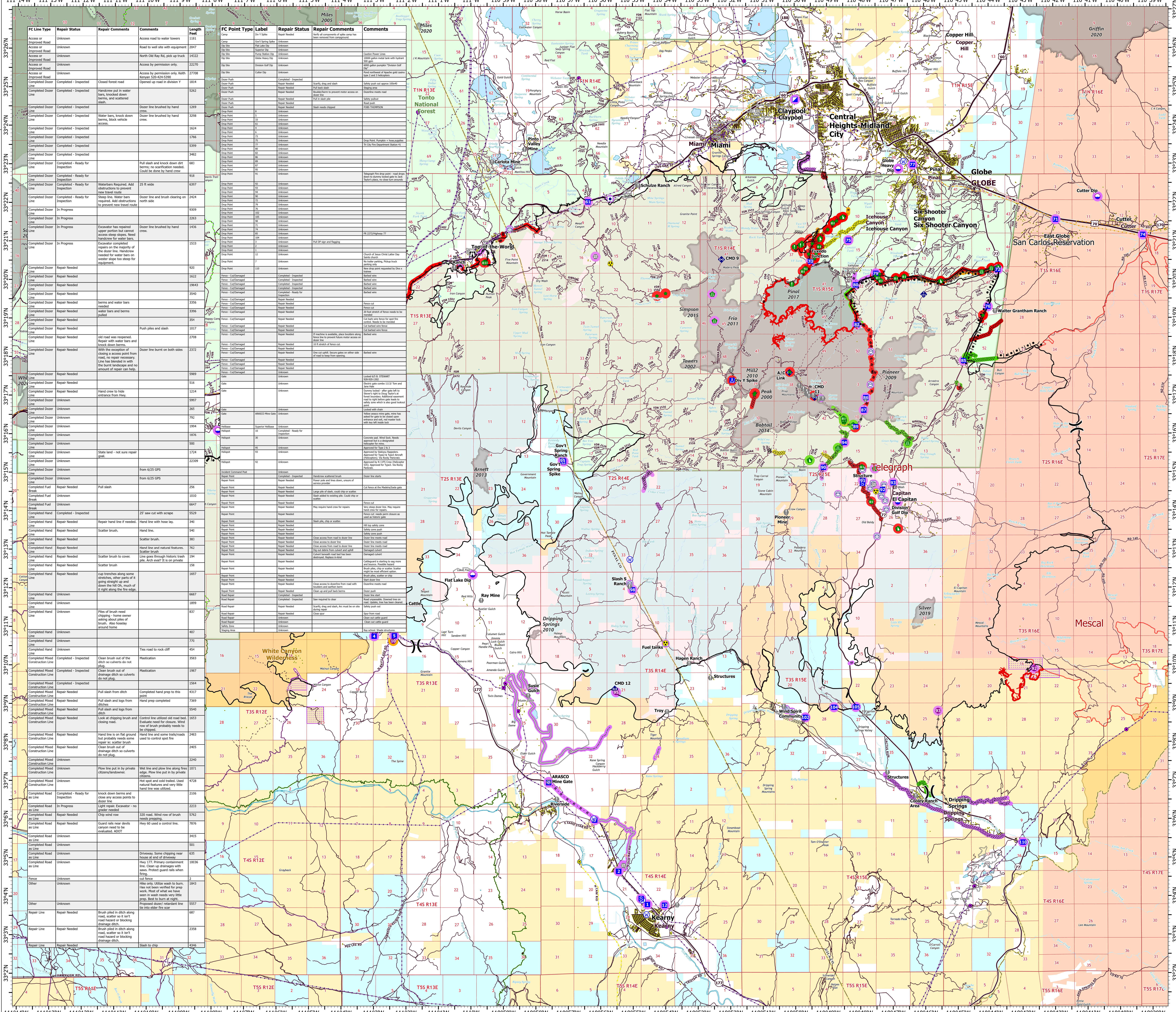
REPAIR

Telegraph
AZ-TNF-1255
6/26/2021
180,755 acres at 6/25/2021 2255 hrs

Repair Status

- Completed - Inspected
- Completed - Ready for Inspection
- Repair Needed
- Unknown
- Completed - Inspected
- Completed - Ready for Inspection
- In Progress
- Repair Needed
- Unknown
- Structure
- Substations
- Gas Facility
- Other Property
- Water Tank
- Dip Site
- Helipost
- Helibase
- Division Break
- Incident Command Post
- Drop Point
- Camp
- Staging Area
- Lookout
- Value at Risk
- Landmark
- Gate
- Bridge
- Road Repair
- Resource Location
- Repair Point
- Fence - Cut/Damaged
- Dozer Push
- Mobile Weather Unit
- Repeater
- Safety Zone
- Hazard
- Water Source
- Completed Burnout
- Completed Dozer Line
- Completed Fuel Break
- Completed Hand Line
- Completed Mixed Construction Line
- Completed Road as Line
- Access or Improved Road
- Other
- Road Repair
- Fire Line
- Contained Line
- Other
- Wildfire Daily Fire Perimeter
- Road
- Trail
- Arizona Trail
- Middle Gila Access Route
- APS Distribution Overhead Infrastructure
- Gas Line
- Oil and Natural Gas Pipelines
- Transmission Lines
- County or Equivalent
- Township/Range
- Section
- BLM
- BR
- Indian Lands
- Private
- State
- USFS
- Wilderness Area Boundary
- Federal Land within Wilderness Area
- BLM Area of Critical Environmental Concern
- Fire History
- USFS Wilderness Area

0 2 4 Miles
0 2 4 Kilometers



FC Line Type	Repair Status	Repair Comments	Comments	Length Feet	FC Point Type	Label	Repair Status	Repair Comments	Comments
Access or Improved Road	Unknown	Access road to water towers		3917	Canal	Canal	Repair Needed	North of components of canal one has been removed from underground	
Access or Improved Road	Unknown	Access road to well site with equipment		1111	Canal	Canal	Repair Needed		
Access or Improved Road	Unknown	North Old Ray Rd, pick up truck		14322	Canal	Canal	Repair Needed		
Access or Improved Road	Unknown	Access by permission only, Keith		22270	Canal	Canal	Repair Needed		
Access or Improved Road	Unknown	Closed forest road		27708	Canal	Canal	Repair Needed		
Completed Dozer Line	Completed - Inspected	Handrow put in water bars, knocked down berms, and contained slash.		1814	Canal	Canal	Repair Needed		
Completed Dozer Line	Completed - Inspected	Dozer line brushed by hand crew.		1269	Canal	Canal	Repair Needed		
Completed Dozer Line	Completed - Inspected	Water bars, knock down berms, block vehicle access.		3258	Canal	Canal	Repair Needed		
Completed Dozer Line	Completed - Inspected			1624	Canal	Canal	Repair Needed		
Completed Dozer Line	Completed - Inspected			1766	Canal	Canal	Repair Needed		
Completed Dozer Line	Completed - Inspected			5399	Canal	Canal	Repair Needed		
Completed Dozer Line	Completed - Inspected			3482	Canal	Canal	Repair Needed		
Completed Dozer Line	Completed - Ready for Inspection	Push slash and knock down dirt berms, no scarification needed. Could be done by hand crew.		663	Canal	Canal	Repair Needed		
Completed Dozer Line	Completed - Ready for Inspection	Waterbars Required. Add obstructions to prevent overtopping.		918	Canal	Canal	Repair Needed		
Completed Dozer Line	Completed - Ready for Inspection	25' wide water bar		6397	Canal	Canal	Repair Needed		
Completed Dozer Line	Completed - Ready for Inspection	Steep line. Water bars required. Add obstructions to prevent overtopping.		2424	Canal	Canal	Repair Needed		
Completed Dozer Line	In Progress	Dozer line and brush clearing on north side.		9309	Canal	Canal	Repair Needed		
Completed Dozer Line	In Progress	Excavator has repaired upper portion but cannot access steep slope. Need handrow for water bars.		2343	Canal	Canal	Repair Needed		
Completed Dozer Line	In Progress	Excavator has repaired upper portion but cannot access steep slope. Need handrow for water bars.		1456	Canal	Canal	Repair Needed		
Completed Dozer Line	In Progress	Excavator completed repairs on the majority of the dozer line. Handrow needed for water bars on wester slope too steep for equipment.		1513	Canal	Canal	Repair Needed		
Completed Dozer Line	Repair Needed			920	Canal	Canal	Repair Needed		
Completed Dozer Line	Repair Needed			1622	Canal	Canal	Repair Needed		
Completed Dozer Line	Repair Needed			19443	Canal	Canal	Repair Needed		
Completed Dozer Line	Repair Needed			3540	Canal	Canal	Repair Needed		
Completed Dozer Line	Repair Needed	berms and water bars needed		3356	Canal	Canal	Repair Needed		
Completed Dozer Line	Repair Needed	water bars and berms pulled		3396	Canal	Canal	Repair Needed		
Completed Dozer Line	Repair Needed			1017	Canal	Canal	Repair Needed		
Completed Dozer Line	Repair Needed	old road was reopened. Repair with water bars and knock down berms.		2708	Canal	Canal	Repair Needed		
Completed Dozer Line	Repair Needed	Dozer line burnt on both sides		2372	Canal	Canal	Repair Needed		
Completed Dozer Line	Repair Needed	with the exception of closing a access point from back, most necessary line has been brushed in with the handrow and no amount of repair can help.		5989	Canal	Canal	Repair Needed		
Completed Dozer Line	Repair Needed	Hand crew to hike entrance from here.		1214	Canal	Canal	Repair Needed		
Completed Dozer Line	Unknown			5997	Canal	Canal	Repair Needed		
Completed Dozer Line	Unknown			265	Canal	Canal	Repair Needed		
Completed Dozer Line	Unknown			792	Canal	Canal	Repair Needed		
Completed Dozer Line	Unknown			1904	Canal	Canal	Repair Needed		
Completed Dozer Line	Unknown			1876	Canal	Canal	Repair Needed		
Completed Dozer Line	Unknown			900	Canal	Canal	Repair Needed		
Completed Dozer Line	Unknown	State land - not sure repair good.		1724	Canal	Canal	Repair Needed		
Completed Dozer Line	Unknown			22109	Canal	Canal	Repair Needed		
Completed Dozer Line	Unknown	from 6/25 GPS			Canal	Canal	Repair Needed		
Completed Dozer Line	Unknown	from 6/25 GPS			Canal	Canal	Repair Needed		
Completed Fuel Break	Repair Needed	Full slash		256	Canal	Canal	Repair Needed		
Completed Fuel Break	Unknown			1010	Canal	Canal	Repair Needed		
Completed Fuel Break	Unknown			1010	Canal	Canal	Repair Needed		
Completed Fuel Break	Unknown			6647	Canal	Canal	Repair Needed		
Completed Hand Line	Completed - Inspected	25' saw cut with scrape		5539	Canal	Canal	Repair Needed		
Completed Hand Line	Repair Needed	Repair hand line if needed.		340	Canal	Canal	Repair Needed		
Completed Hand Line	Repair Needed	Scatter brush.		540	Canal	Canal	Repair Needed		
Completed Hand Line	Repair Needed	Scatter brush.		381	Canal	Canal	Repair Needed		
Completed Hand Line	Repair Needed	Hand line and natural features. Scatter brush.		762	Canal	Canal	Repair Needed		
Completed Hand Line	Repair Needed	Scatter brush to cover line. Check weather! B is on grade.		194	Canal	Canal	Repair Needed		
Completed Hand Line	Repair Needed	Scatter brush		158	Canal	Canal	Repair Needed		
Completed Hand Line	Repair Needed	cap trenches along some stretches, other parts of it going straight up and down the hill. Much of it left down the fire edge.		1697	Canal	Canal	Repair Needed		
Completed Hand Line	Unknown			6667	Canal	Canal	Repair Needed		
Completed Hand Line	Unknown			1899	Canal	Canal	Repair Needed		
Completed Hand Line	Unknown	Riles of brush need chipping - have owner asking about piles of brush. Also heavy around home.		837	Canal	Canal	Repair Needed		
Completed Hand Line	Unknown			407	Canal	Canal	Repair Needed		
Completed Hand Line	Unknown			770	Canal	Canal	Repair Needed		
Completed Hand Line	Unknown	This road to rock cliff		454	Canal	Canal	Repair Needed		
Completed Mixed Construction Line	Completed - Inspected	Clean brush out of the ditch so culverts do not plug.		3583	Canal	Canal	Repair Needed		
Completed Mixed Construction Line	Completed - Inspected	Clean brush out of the ditch so culverts do not plug.		1967	Canal	Canal	Repair Needed		
Completed Mixed Construction Line	Completed - Inspected	Clean brush out of the ditch so culverts do not plug.		1564	Canal	Canal	Repair Needed		
Completed Mixed Construction Line	Repair Needed	Full slash from ditch		4317	Canal	Canal	Repair Needed		
Completed Mixed Construction Line	Repair Needed	Full slash and logs from ditch		7369	Canal	Canal	Repair Needed		
Completed Mixed Construction Line	Repair Needed	Full slash and logs from ditch		5940	Canal	Canal	Repair Needed		
Completed Mixed Construction Line	Repair Needed	Look at chipping brush and clearing road.		1663	Canal	Canal	Repair Needed		
Completed Mixed Construction Line	Repair Needed	Hand line is on flat ground but stability needs some repair or scatter brush		2483	Canal	Canal	Repair Needed		
Completed Mixed Construction Line	Repair Needed	Clean brush out of drainage ditch so culverts do not plug.		2405	Canal	Canal	Repair Needed		
Completed Mixed Construction Line	Unknown			2240	Canal	Canal	Repair Needed		
Completed Mixed Construction Line	Unknown	Flow line put in by private citizens/landowner.		1071	Canal	Canal	Repair Needed		
Completed Mixed Construction Line	Unknown	Hot spot and cold trail. Used rubber tires and very little hand line was utilized.		4728	Canal	Canal	Repair Needed		
Completed Mixed Construction Line	Completed - Ready for Inspection	Knock down berms and close any access points to gutter line.		2106	Canal	Canal	Repair Needed		
Completed Mixed Construction Line	In Progress	Light ripper. Excavator - no trailer needed.		2233	Canal	Canal	Repair Needed		
Completed Mixed Construction Line	Repair Needed	Chip wind row		5782	Canal	Canal	Repair Needed		
Completed Mixed Construction Line	Repair Needed	Guard rails near devil's canyon need to be constructed. ADOT.		7876	Canal	Canal	Repair Needed		
Completed Mixed Construction Line	Unknown			3415	Canal	Canal	Repair Needed		
Completed Mixed Construction Line	Unknown			501	Canal	Canal	Repair Needed		
Completed Mixed Construction Line	Unknown	Driveway. Some chipping near house at end of driveway Hwy 177. Primary containment line. Clean up drainage with water. Protect guard rails when firing.		10036	Canal	Canal	Repair Needed		
Completed Mixed Construction Line	Unknown			2	Canal	Canal	Repair Needed		
Completed Mixed Construction Line	Unknown	Hike only. Utilize wash to burn. Has not been verified for prep work. Most of what we have seen in wash needs very little prep. Best to burn at night. Proposed down retardant line in either fire size.		1843	Canal	Canal	Repair Needed		
Completed Mixed Construction Line	Unknown			5937	Canal	Canal	Repair Needed		
Completed Mixed Construction Line	Repair Needed	Brush piled in ditch along road, scatter as much as can be road hazard or blocking drainage ditch.		687	Canal	Canal	Repair Needed		
Completed Mixed Construction Line	Repair Needed	Brush piled in ditch along road, scatter as much as can be road hazard or blocking drainage ditch.		2358	Canal	Canal	Repair Needed		
Completed Mixed Construction Line	Repair Needed	Brush piled in ditch along road, scatter as much as can be road hazard or blocking drainage ditch.		4366	Canal	Canal	Repair Needed		