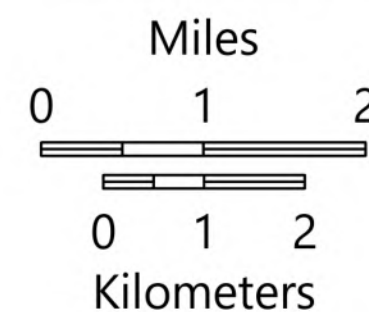
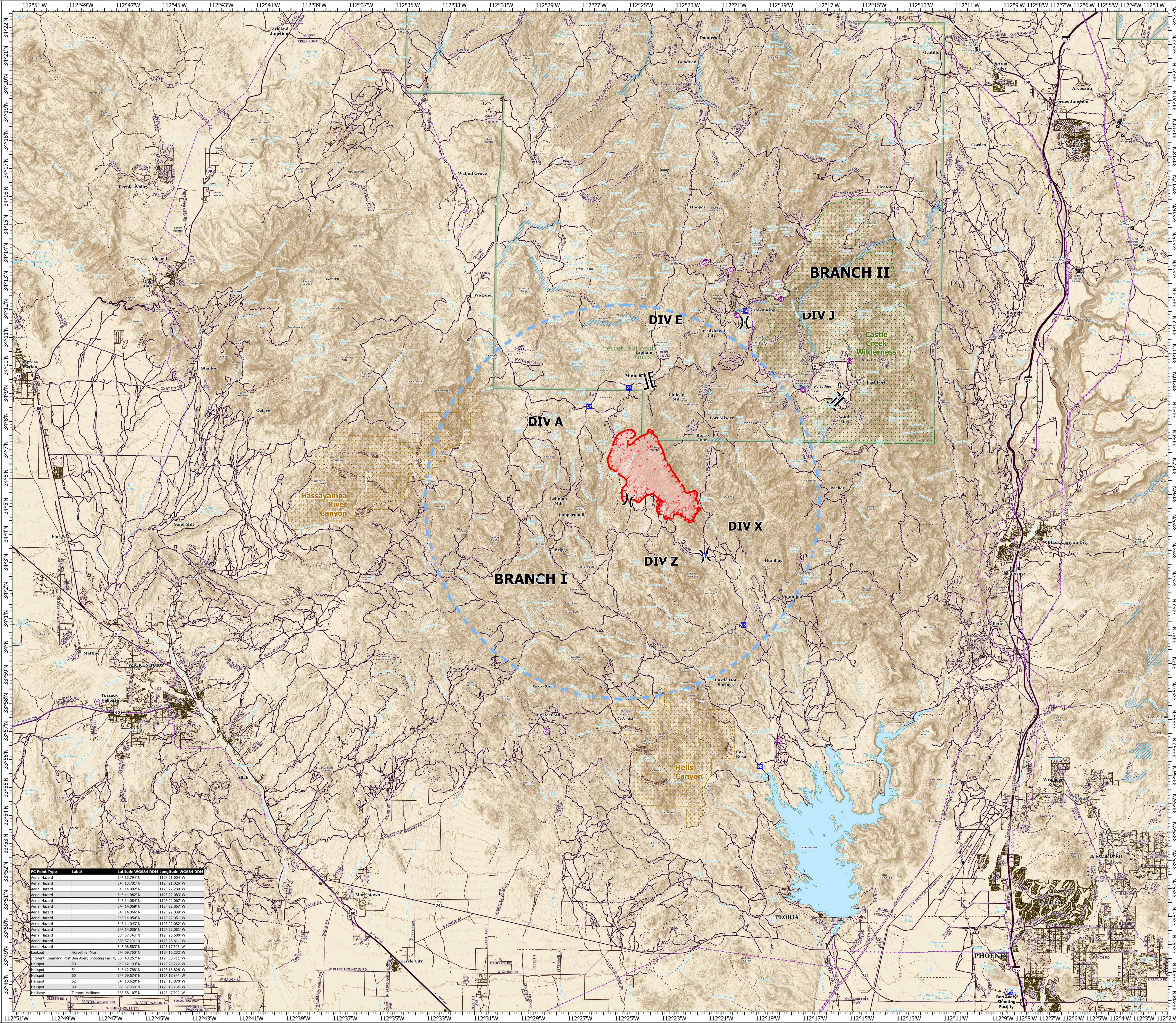


AIR OPS

Tussock
AZ-PHD-455
5/11/2021

4,421 acres at 5/10/2021 2130 hrs

- Aerial Hazard
- Helispot
- Helibase
- Division Break
- Branch Break
- Incident Command Post
- Drop Point
- Lookout
- IR Isolated Heat Source
- Temporary Flight Restriction
- Fire Edge
- Wildfire Daily Fire Perimeter
- Campground
- Trailhead
- Other
- Toilet
- Trailhead
- Parking Area
- Other
- Gas Line
- Electric Power Transmission Line
- Primary Road; Secondary Road
- Trail
- Other Route
- Expressway
- Secondary Hwy
- Local Connector
- Local Road
- Ramp
- 4WD
- Structure
- Retardant Avoidance Area
- USFS Wilderness
- BLM Wilderness
- Forest Service



FC Point Type	Label	Latitude WGS84 DDM	Longitude WGS84 DDM
Aerial Hazard		34° 13.794' N	112° 21.524' W
Aerial Hazard		34° 13.791' N	112° 21.026' W
Aerial Hazard		34° 14.002' N	112° 22.230' W
Aerial Hazard		34° 14.082' N	112° 22.083' W
Aerial Hazard		34° 14.084' N	112° 21.967' W
Aerial Hazard		34° 14.069' N	112° 22.067' W
Aerial Hazard		34° 14.066' N	112° 22.039' W
Aerial Hazard		34° 14.059' N	112° 22.051' W
Aerial Hazard		34° 14.043' N	112° 22.081' W
Aerial Hazard		33° 57.343' N	112° 28.600' W
Aerial Hazard		33° 57.201' N	112° 28.613' W
Aerial Hazard		34° 08.583' N	112° 17.702' W
Lookout	Horseshoe Mtn	34° 09.750' N	112° 16.232' W
Incident Command Post	Ben Avery Shooting Facility	33° 48.257' N	112° 08.711' W
Helispot	51	34° 12.030' N	112° 20.722' W
Helispot	51	34° 12.288' N	112° 19.829' W
Helispot	60	34° 09.574' N	112° 17.844' W
Helispot	62	34° 10.620' N	112° 15.870' W
Helispot	69	33° 57.688' N	112° 18.744' W
Helibase	Tussock Helibase	33° 58.107' N	112° 47.792' W