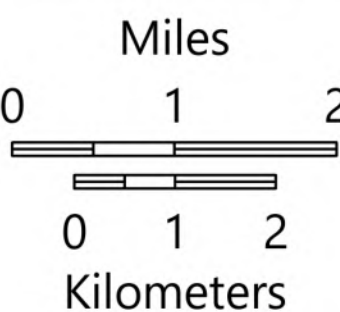
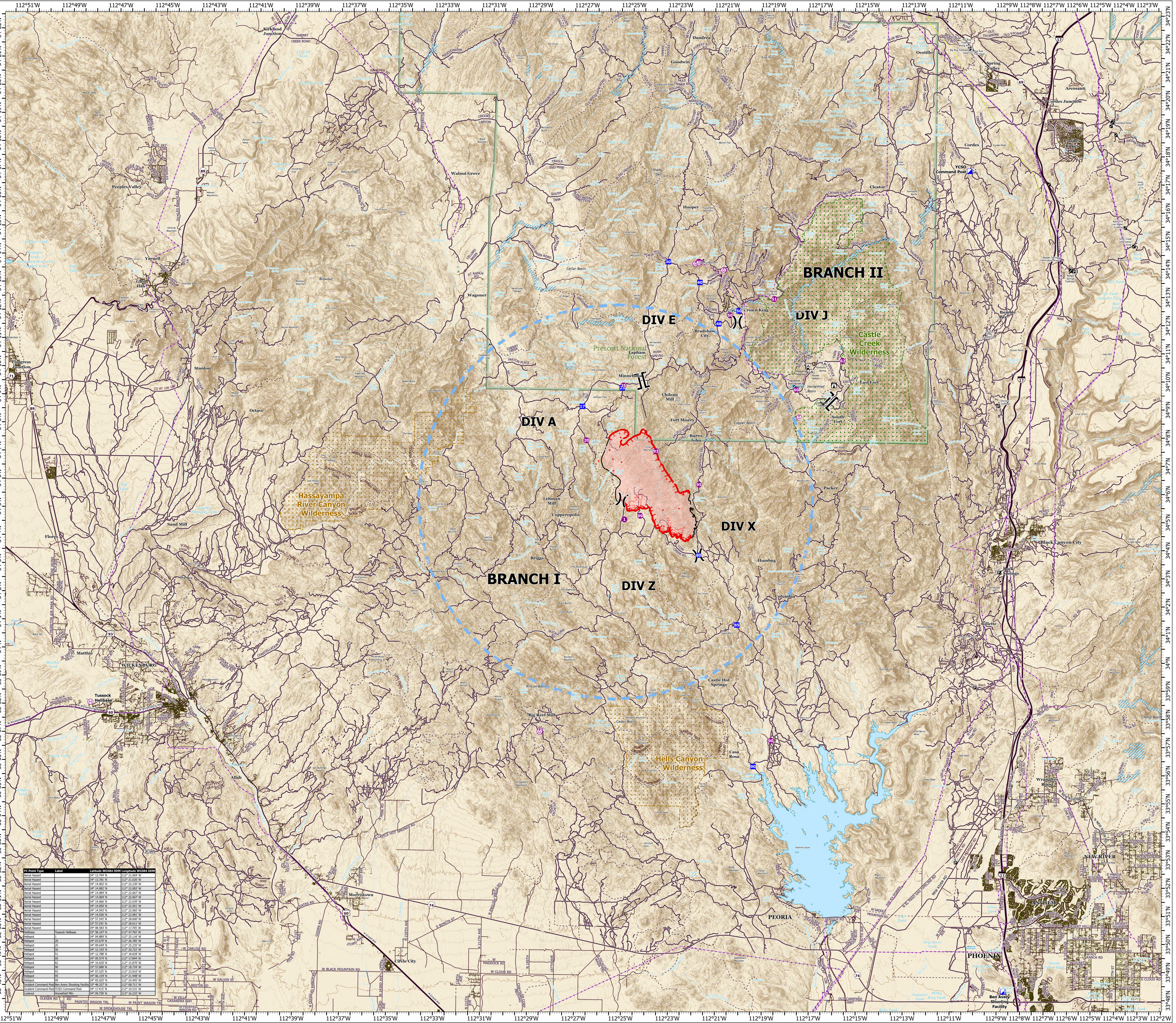


AIR OPS

Tussock
AZ-PHD-455
5/13/2021

5,517 acres at 5/12/2021 1930 hrs

- ⊖ Aerial Hazard
- ⊕ Helispot
- ⊞ Helibase
- ⌘ Division Break
- ⌘ Branch Break
- Ⓜ Incident Command Post
- 📍 Drop Point
- 🏠 Lookout
- 🔴 IR Isolated Heat Source
- 🔵 Temporary Flight Restriction
- 🔴 Fire Edge
- 📏 Contained Line
- 🔴 IR Intense Heat
- 🔴 IR Scattered Heat
- 🔴 Wildfire Daily Fire Perimeter
- 🏕 Campground
- 🏞 Trailhead
- 🚽 Toilet
- 🏠 Other
- 🚗 Parking Area
- 🏠 Other
- 🔵 Gas Line
- ⚡ Electric Power Transmission Line
- 🛣 Primary Road; Secondary Road
- 🛤 Trail
- 🛣 Other Route
- 🛣 Expressway
- 🛣 Secondary Hwy
- 🛣 Local Connector
- 🛣 Local Road
- 🛣 Ramp
- 🛣 4WD
- 🏠 Structure
- 🟡 Retardant Avoidance Area
- 🟡 USFS Wilderness
- 🟡 BLM Wilderness
- 🟢 Forest Service



IC Unit Type	Label	Latitude/Longitude Corner	Longitude/Width (East)
Aerial Hazard		34° 13' 25.80" N	112° 22' 00.00" W
Aerial Hazard		34° 13' 25.80" N	112° 22' 00.00" W
Aerial Hazard		34° 14' 00.00" N	112° 22' 00.00" W
Aerial Hazard		34° 14' 00.00" N	112° 22' 00.00" W
Aerial Hazard		34° 14' 00.00" N	112° 22' 00.00" W
Aerial Hazard		34° 14' 00.00" N	112° 22' 00.00" W
Aerial Hazard		34° 14' 00.00" N	112° 22' 00.00" W
Aerial Hazard		34° 14' 00.00" N	112° 22' 00.00" W
Aerial Hazard		34° 14' 00.00" N	112° 22' 00.00" W
Aerial Hazard		33° 57' 34.71" N	112° 28' 00.00" W
Aerial Hazard		33° 57' 34.71" N	112° 28' 00.00" W
Aerial Hazard		34° 08' 58.53" N	112° 17' 30.00" W
Aerial Hazard		34° 08' 58.53" N	112° 17' 30.00" W
Helibase		34° 04' 00.00" N	112° 25' 11.66" W
Helibase		34° 04' 00.00" N	112° 25' 11.66" W
Helibase		34° 04' 00.00" N	112° 25' 11.66" W
Helibase		34° 12' 00.00" N	112° 28' 22.22" W
Helibase		34° 12' 00.00" N	112° 28' 22.22" W
Helibase		34° 09' 57.94" N	112° 17' 04.44" W
Helibase		33° 57' 08.88" N	112° 18' 23.34" W
Helibase		33° 57' 08.88" N	112° 18' 23.34" W
Helibase		33° 57' 08.88" N	112° 18' 23.34" W
Helibase		34° 06' 55.99" N	112° 23' 34.68" W
Helibase		34° 06' 55.99" N	112° 23' 34.68" W
Helibase		34° 00' 00.00" N	112° 24' 44.44" W
Incident Command Post	Peoples Valley	34° 14' 00.00" N	112° 28' 00.00" W
Incident Command Post	Circle City	34° 17' 43.33" N	112° 10' 53.33" W
Incident Command Post	Circle City	34° 17' 43.33" N	112° 10' 53.33" W
Incident Command Post	Circle City	34° 17' 43.33" N	112° 10' 53.33" W