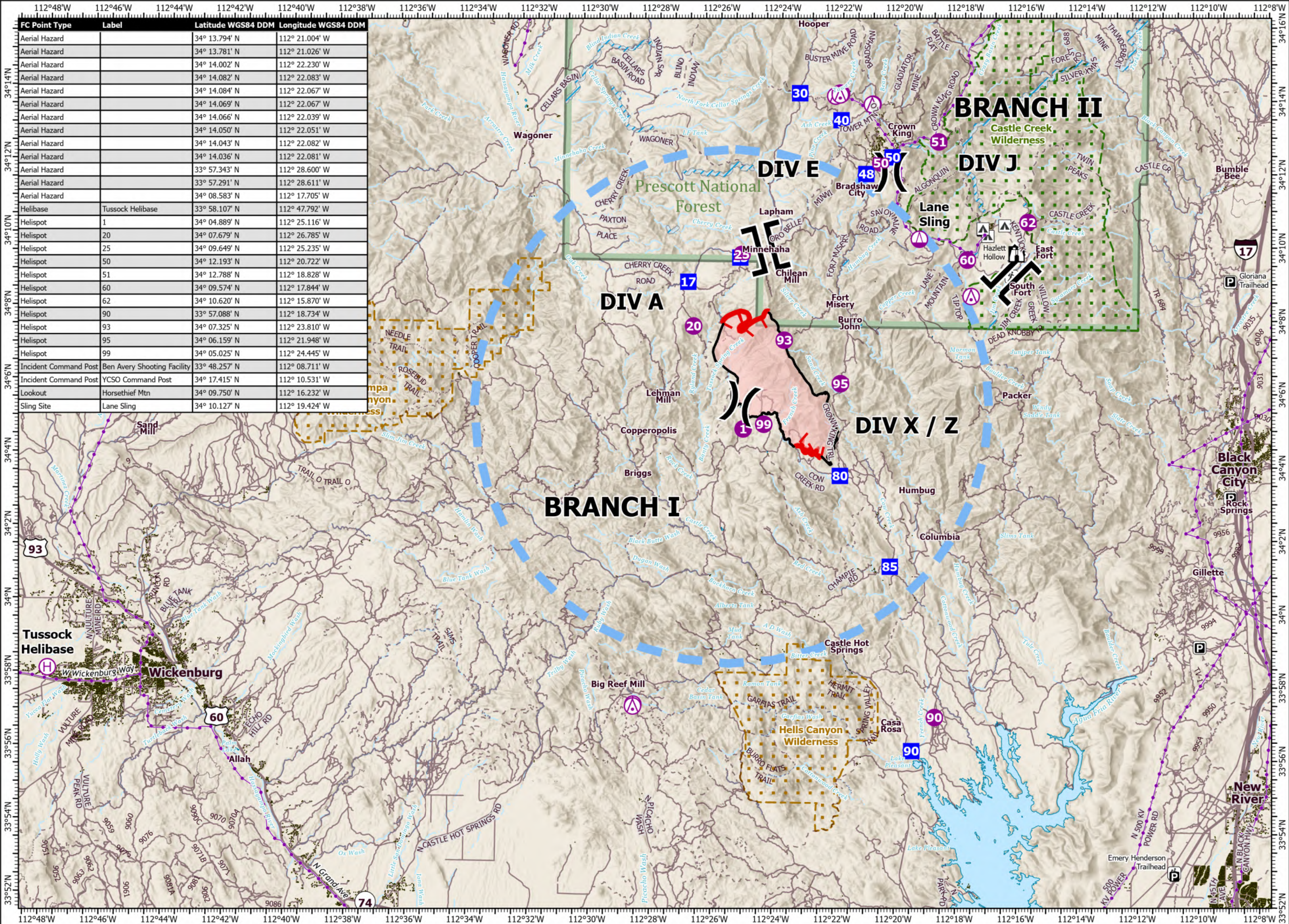


# PILOT

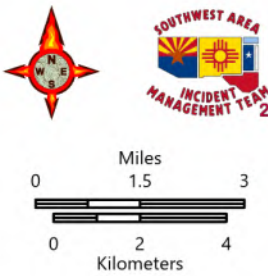
Tussock  
AZ-PHD-455  
5/15/2021

5,546 acres at 5/12/2021 1740 hrs

- Aerial Hazard
- Helispot
- Helibase
- Sling Site
- Division Break
- Branch Break
- Drop Point
- Lookout
- Temporary Flight Restriction
- Fire Edge
- Contained Line
- Wildfire Daily Fire Perimeter
- Electric Power Transmission Line
- Campground
- Trailhead
- Other
- Expressway
- Secondary Hwy
- Local Road
- 4WD
- Trail
- BLM Wilderness
- USFS Wilderness
- Forest Service



FC Point Type	Label	Latitude WGS84 DDM	Longitude WGS84 DDM
Aerial Hazard		34° 13.794' N	112° 21.004' W
Aerial Hazard		34° 13.781' N	112° 21.026' W
Aerial Hazard		34° 14.002' N	112° 22.230' W
Aerial Hazard		34° 14.082' N	112° 22.083' W
Aerial Hazard		34° 14.084' N	112° 22.067' W
Aerial Hazard		34° 14.069' N	112° 22.067' W
Aerial Hazard		34° 14.066' N	112° 22.039' W
Aerial Hazard		34° 14.050' N	112° 22.051' W
Aerial Hazard		34° 14.043' N	112° 22.082' W
Aerial Hazard		34° 14.036' N	112° 22.081' W
Aerial Hazard		33° 57.343' N	112° 28.600' W
Aerial Hazard		33° 57.291' N	112° 28.611' W
Aerial Hazard		34° 08.583' N	112° 17.705' W
Helibase	Tussock Helibase	33° 58.107' N	112° 47.792' W
Helispot	1	34° 04.889' N	112° 25.116' W
Helispot	20	34° 07.679' N	112° 26.785' W
Helispot	25	34° 09.649' N	112° 25.235' W
Helispot	50	34° 12.193' N	112° 20.722' W
Helispot	51	34° 12.788' N	112° 18.828' W
Helispot	60	34° 09.574' N	112° 17.844' W
Helispot	62	34° 10.620' N	112° 15.870' W
Helispot	90	33° 57.088' N	112° 18.734' W
Helispot	93	34° 07.325' N	112° 23.810' W
Helispot	95	34° 06.159' N	112° 21.948' W
Helispot	99	34° 05.025' N	112° 24.445' W
Incident Command Post	Ben Avery Shooting Facility	33° 48.257' N	112° 08.711' W
Incident Command Post	YCSO Command Post	34° 17.415' N	112° 10.531' W
Lookout	Horse Thief Mtn	34° 09.750' N	112° 16.232' W
Sling Site	Lane Sling	34° 10.127' N	112° 19.424' W



1:175,000 - SWAIMT2 - 5/15/2021 0520

North American 1983 Datum. Lat/Long Grid

