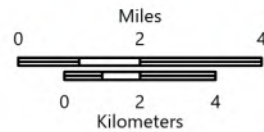


PILOT

Tussock
AZ-PHD-455
5/17/2021

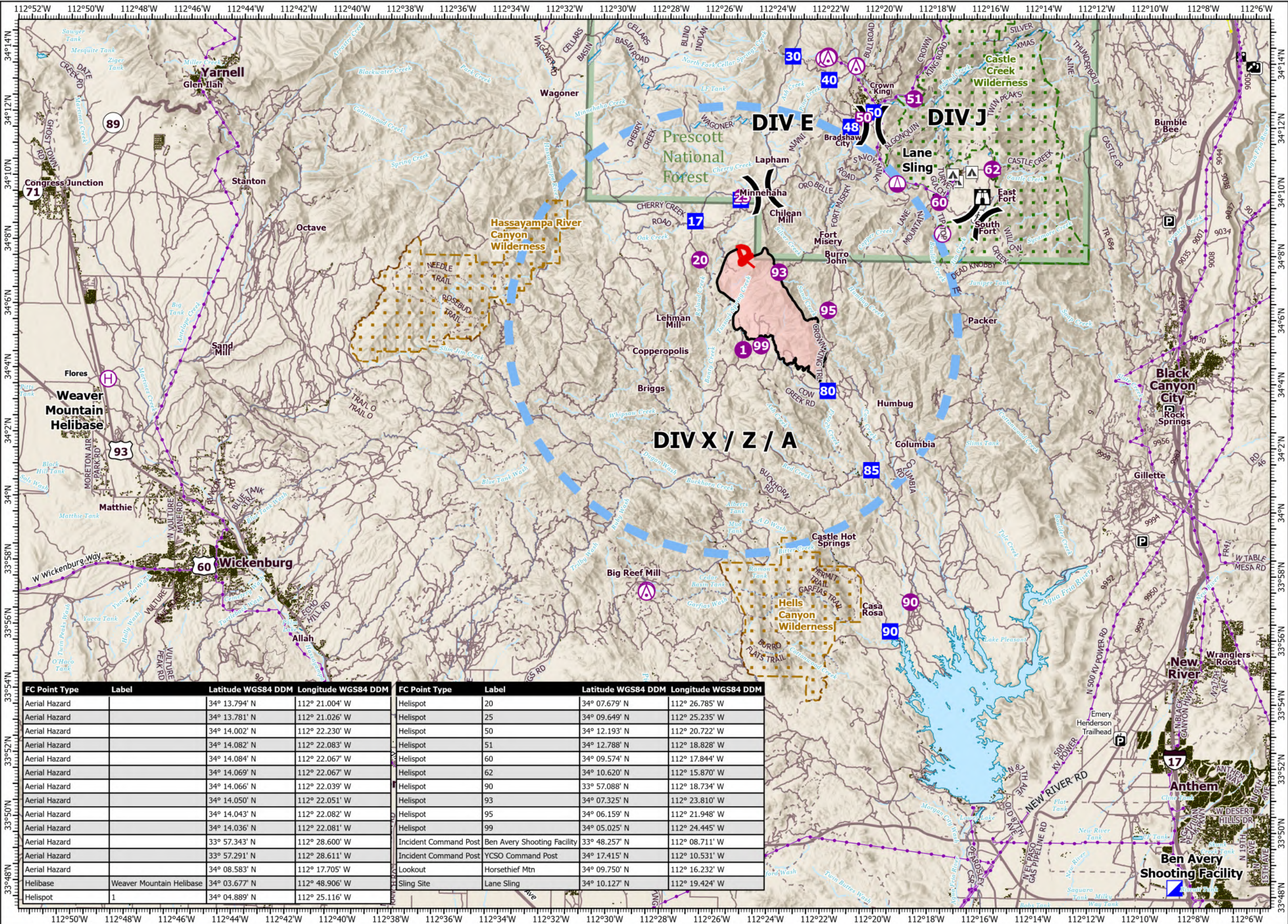
5,546 acres at 5/12/2021 1740 hrs

- Aerial Hazard
- Helispot
- Helibase
- Sling Site
- Division Break
- Incident Command Post
- Drop Point
- Lookout
- Temporary Flight Restriction
- Fire Edge
- Contained Line
- Wildfire Daily Fire Perimeter
- Gas Line
- Electric Power
- Transmission Line
- Campground
- Trailhead
- Other
- Expressway
- Secondary Hwy
- Local Road
- 4WD
- Trail
- BLM Wilderness
- USFS Wilderness
- Forest Service



1:200,000 - SWAINT2 - 5/16/2021 1618

North American 1983 Datum. Lat/Long Grid



| FC Point Type | Label | Latitude WGS84 DDM | Longitude WGS84 DDM | FC Point Type | Label | Latitude WGS84 DDM | Longitude WGS84 DDM |
|---------------|--------------------------|--------------------|---------------------|-----------------------|-----------------------------|--------------------|---------------------|
| Aerial Hazard | | 34° 13.794' N | 112° 21.004' W | Helispot | 20 | 34° 07.679' N | 112° 26.785' W |
| Aerial Hazard | | 34° 13.781' N | 112° 21.026' W | Helispot | 25 | 34° 09.649' N | 112° 25.235' W |
| Aerial Hazard | | 34° 14.002' N | 112° 22.230' W | Helispot | 50 | 34° 12.193' N | 112° 20.722' W |
| Aerial Hazard | | 34° 14.082' N | 112° 22.083' W | Helispot | 51 | 34° 12.788' N | 112° 18.828' W |
| Aerial Hazard | | 34° 14.084' N | 112° 22.067' W | Helispot | 60 | 34° 09.574' N | 112° 17.844' W |
| Aerial Hazard | | 34° 14.069' N | 112° 22.067' W | Helispot | 62 | 34° 10.620' N | 112° 15.870' W |
| Aerial Hazard | | 34° 14.066' N | 112° 22.039' W | Helispot | 90 | 33° 57.088' N | 112° 18.734' W |
| Aerial Hazard | | 34° 14.050' N | 112° 22.051' W | Helispot | 93 | 34° 07.325' N | 112° 23.810' W |
| Aerial Hazard | | 34° 14.043' N | 112° 22.082' W | Helispot | 95 | 34° 06.159' N | 112° 21.948' W |
| Aerial Hazard | | 34° 14.036' N | 112° 22.081' W | Helispot | 99 | 34° 05.025' N | 112° 24.445' W |
| Aerial Hazard | | 33° 57.343' N | 112° 28.600' W | Incident Command Post | Ben Avery Shooting Facility | 33° 48.257' N | 112° 08.711' W |
| Aerial Hazard | | 33° 57.291' N | 112° 28.611' W | Incident Command Post | YCSO Command Post | 34° 17.415' N | 112° 10.531' W |
| Aerial Hazard | | 34° 08.583' N | 112° 17.705' W | Lookout | Horsethief Mtn | 34° 09.750' N | 112° 16.232' W |
| Helibase | Weaver Mountain Helibase | 34° 03.677' N | 112° 48.906' W | Sling Site | Lane Sling | 34° 10.127' N | 112° 19.424' W |
| Helispot | 1 | 34° 04.889' N | 112° 25.116' W | | | | |