

106°56'0"W

106°55'0"W

106°54'0"W

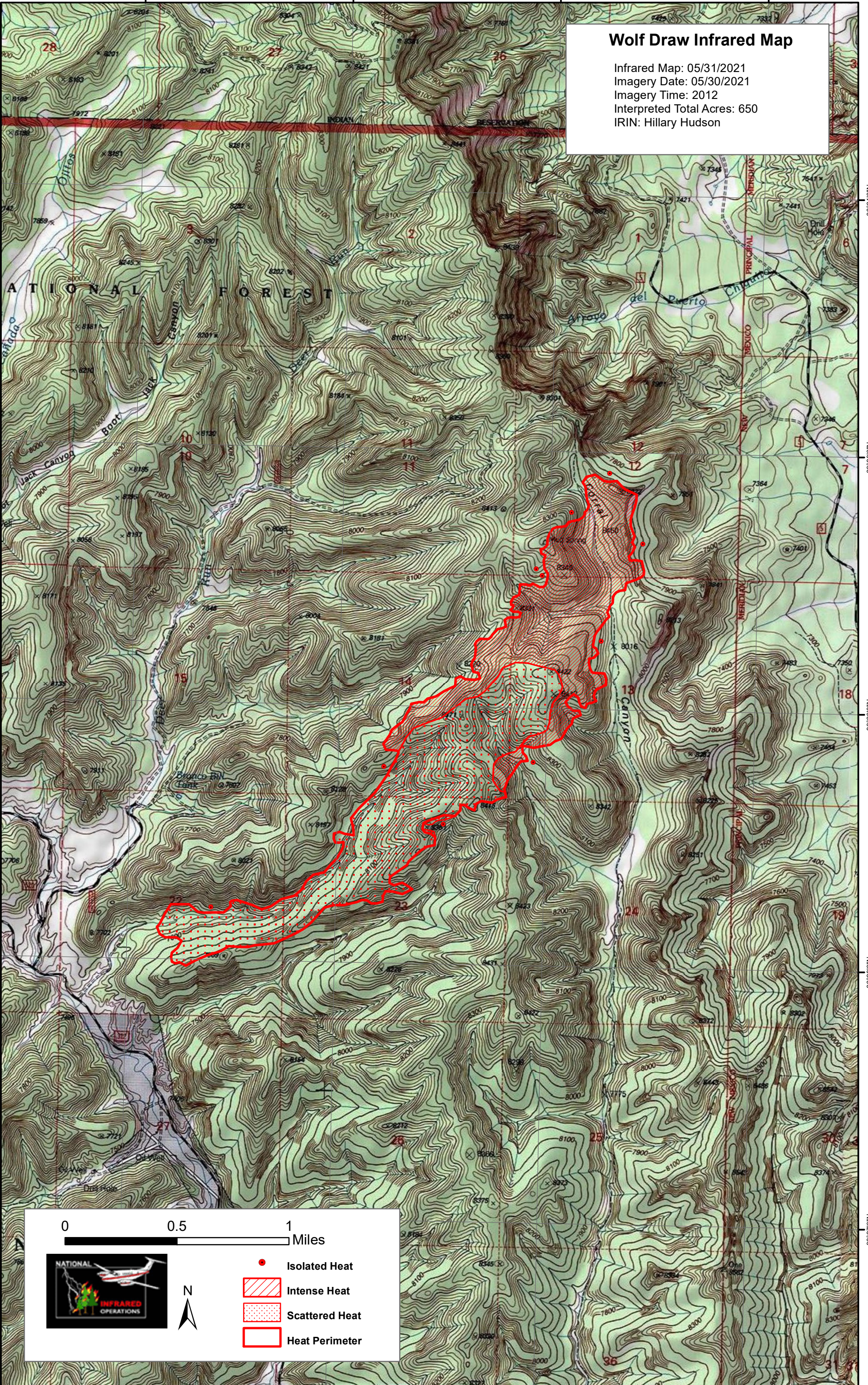
106°53'0"W

Wolf Draw Infrared Map

Infrared Map: 05/31/2021
Imagery Date: 05/30/2021
Imagery Time: 2012
Interpreted Total Acres: 650
IRIN: Hillary Hudson

36°31'0"N
36°30'0"N
36°29'0"N
36°28'0"N
36°27'0"N

36°31'0"N
36°30'0"N
36°29'0"N
36°28'0"N
36°27'0"N



0 0.5 1 Miles



- Isolated Heat
- Intense Heat
- Scattered Heat
- Heat Perimeter

106°56'0"W

106°55'0"W

106°54'0"W

106°53'0"W