

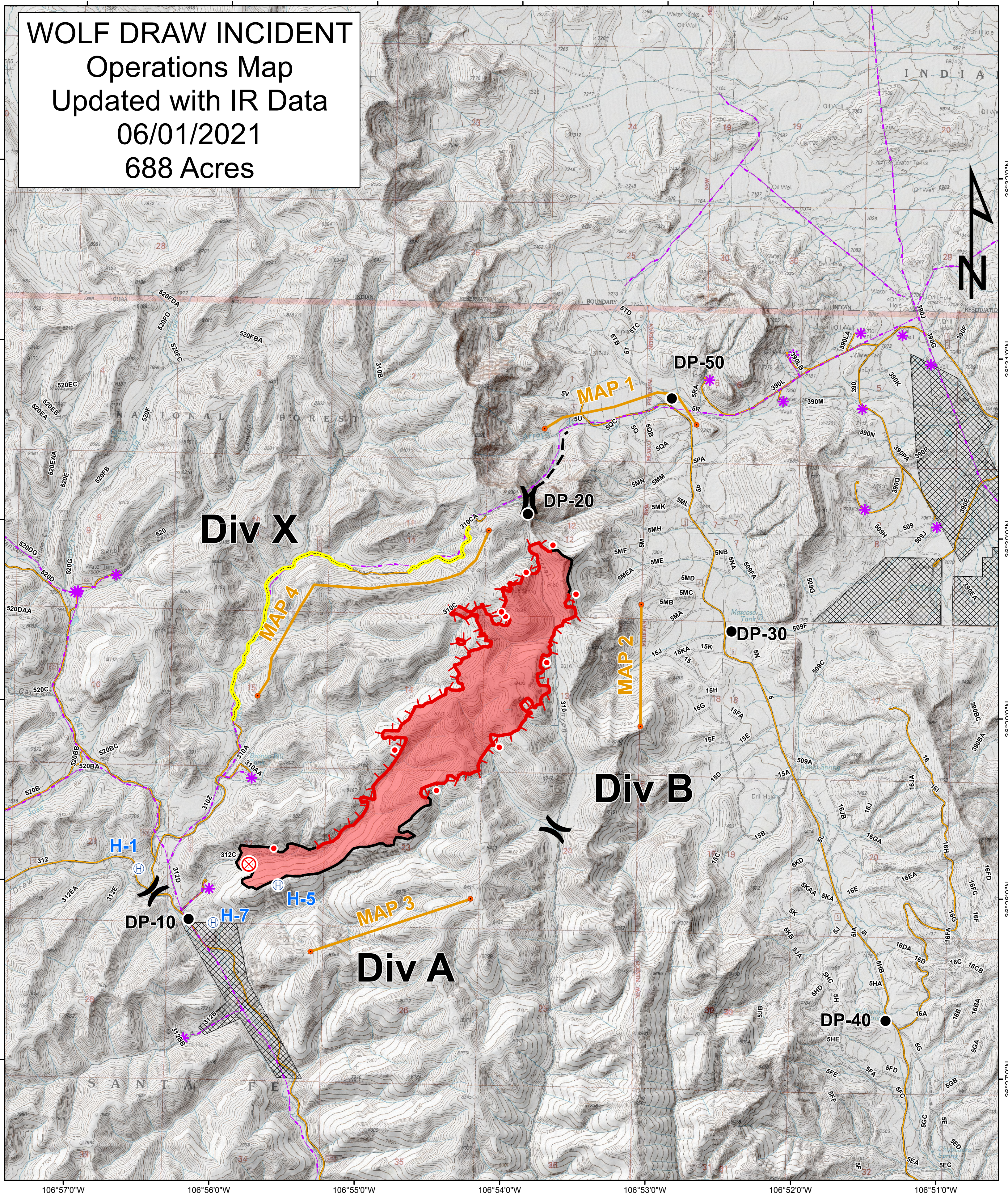
WOLF DRAW INCIDENT

Operations Map

Updated with IR Data

06/01/2021

688 Acres



Legend

- Spot Fire
- W Dip Site
- Drop Point
- Division Break
- X Fire Origin
- H Heli Spot
- I ICP
- C Spike Camp
- ✱ Oil Gas Wells
- Brush Control Road Prep Completed
- Completed Handline
- Contingency Handline Completed
- Management Action Point
- Uncontrolled Fire Edge
- Gas/Oil Pipeline
- Wolf Draw Perimeter 05312021 1900
- Private
- County Road
- State Hwy
- US Hwy
- Interstate
- Main Forest Road
- Forest Road
- Trail_Route