

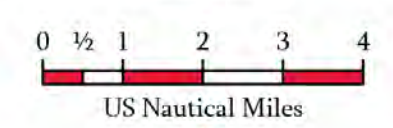
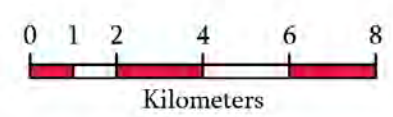
# Pilot Map

## Bear Trap Fire

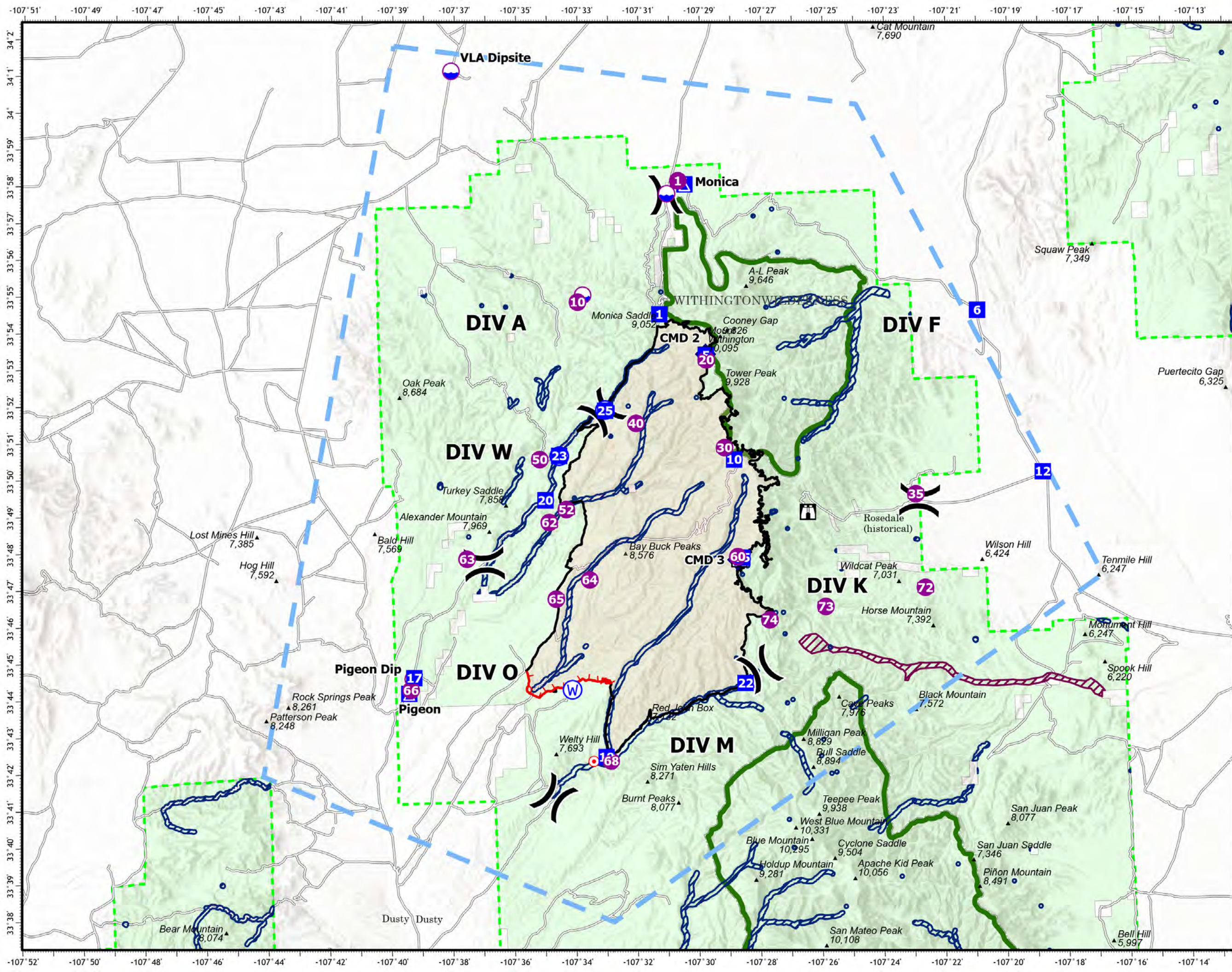
### NM-CIF-000138

#### 6/1/2022

-  Dip Site
-  Helispot
-  Division Break
-  Drop Point
-  Camp
-  Lookout
-  Hot Spot - Spot Fire
-  Repeater
-  Water Source
-  Aerial Hazard Points
-  No Retardant - Aquatics
-  No Retardant - Cultural
-  Temporary Flight Restriction



1:175,000  
Datum: North American 1983



<b>FC Point Type</b>	<b>Label</b>	<b>Latitude WGS84 DDM</b>	<b>Longitude WGS84 DDM</b>
Camp	Monica	33° 57.48270130' N	107° 29.66238021' W
Camp	Pigeon	33° 43.88567429' N	107° 39.18399438' W
Dip Site		33° 57.24357645' N	107° 30.25291831' W
Dip Site		33° 54.56453124' N	107° 33.11421332' W
Dip Site	Pigeon Dip	33° 44.27967670' N	107° 39.03939199' W
Dip Site	VLA Dipsite	34° 00.76587414' N	107° 37.16199113' W
Drop Point	0	34° 04.53350000' N	107° 27.13487412' W
Drop Point	1	33° 53.97447508' N	107° 30.62599851' W
Drop Point	10	33° 49.95930730' N	107° 28.35326568' W
Drop Point	12	33° 49.34799995' N	107° 18.33300002' W
Drop Point	15	33° 47.29107236' N	107° 28.19293164' W
Drop Point	17	33° 44.30869167' N	107° 39.00215601' W
Drop Point	19	33° 41.99459676' N	107° 32.83823720' W
Drop Point	20	33° 49.02413619' N	107° 34.54625463' W
Drop Point	22	33° 43.87793576' N	107° 28.22951727' W
Drop Point	23	33° 50.21721715' N	107° 34.05388000' W
Drop Point	25	33° 51.40836157' N	107° 32.51150943' W
Drop Point	5	33° 52.81582001' N	107° 29.15665430' W
Drop Point	6	33° 53.79848431' N	107° 20.28083166' W
Helibase	Bear Trap	34° 01.36743655' N	106° 53.87370034' W
Helispot	1	33° 57.58700001' N	107° 29.87299999' W
Helispot	10	33° 54.37955549' N	107° 33.28990660' W
Helispot	20	33° 52.69299999' N	107° 29.14800001' W
Helispot	30	33° 50.29200002' N	107° 28.65000000' W
Helispot	35	33° 48.85767518' N	107° 22.48439521' W
Helispot	40	33° 51.03199999' N	107° 31.50199998' W
Helispot	50	33° 50.13499998' N	107° 34.68800000' W
Helispot	52	33° 48.75467583' N	107° 33.87739269' W
Helispot	60	33° 47.31773869' N	107° 28.33984266' W
Helispot	62	33° 48.41767583' N	107° 34.44739265' W
Helispot	63	33° 47.49158206' N	107° 37.16084735' W
Helispot	64	33° 46.82167602' N	107° 33.19239302' W
Helispot	65	33° 46.32767614' N	107° 34.30139286' W
Helispot	66	33° 43.97967673' N	107° 39.11939199' W
Helispot	68	33° 41.87987986' N	107° 32.68277275' W
Helispot	72	33° 46.30673671' N	107° 22.27906617' W
Helispot	73	33° 45.88219175' N	107° 25.53470071' W
Helispot	74	33° 45.57167594' N	107° 27.36739441' W
Helispot	Magdalena	34° 05.98367221' N	107° 15.52939539' W
Incident Command Post		34° 07.21693223' N	107° 14.66158668' W
Repeater	CMD 1	33° 59.45823386' N	107° 11.27735063' W
Repeater	CMD 2	33° 52.84960001' N	107° 29.16539997' W
Repeater	CMD 3	33° 47.23315420' N	107° 28.34655860' W