

107°34'0"W

107°32'0"W

107°30'0"W

107°28'0"W

33°54'0"N

33°54'0"N

33°52'0"N

33°52'0"N

33°50'0"N

33°50'0"N

33°48'0"N

33°48'0"N

33°46'0"N

33°46'0"N

33°44'0"N

33°44'0"N

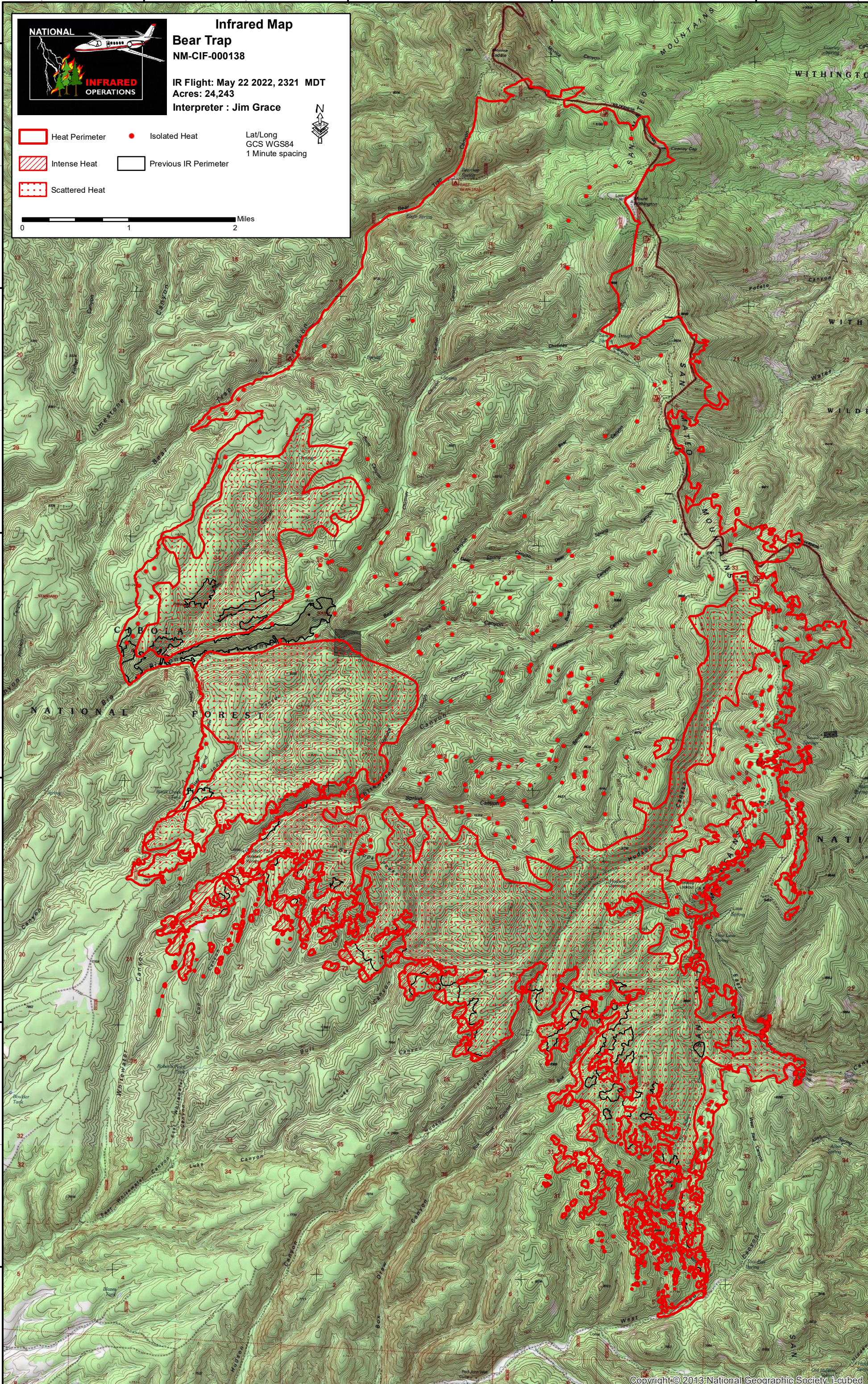
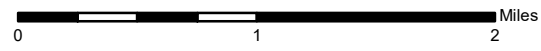


**Infrared Map**  
**Bear Trap**  
NM-CIF-000138

IR Flight: May 22 2022, 2321 MDT  
Acres: 24,243  
Interpreter: Jim Grace

- Heat Perimeter
- Isolated Heat
- Intense Heat
- Previous IR Perimeter
- Scattered Heat

Lat/Long  
GCS WGS84  
1 Minute spacing



107°34'0"W

107°32'0"W

107°30'0"W

107°28'0"W