

Air Ops Map

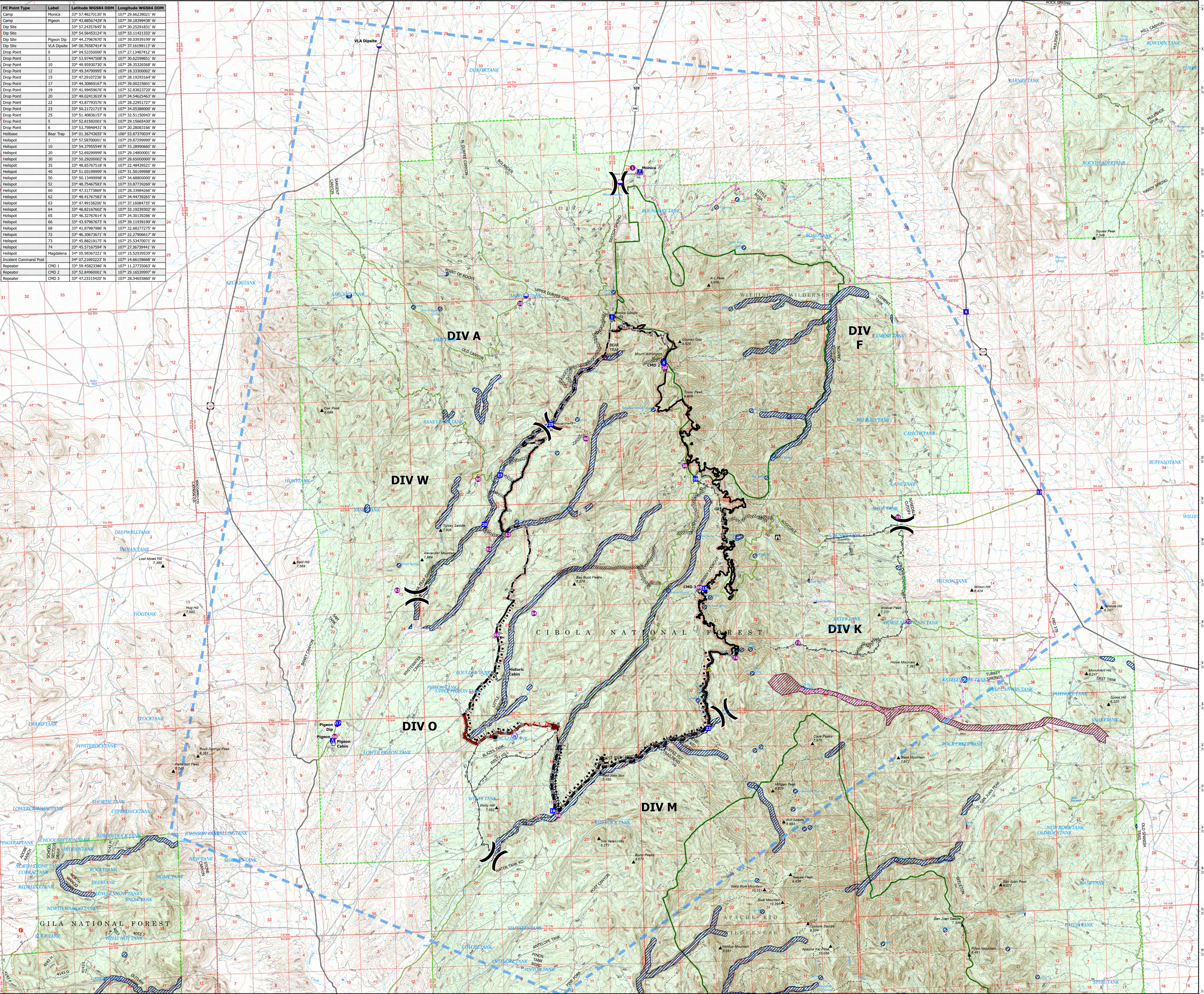
Bear Trap Fire

NM-CIF-000138

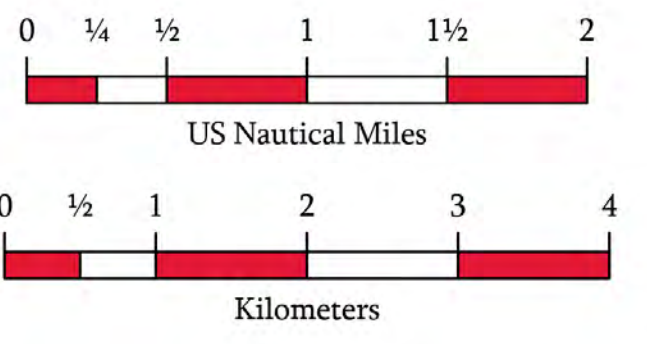
6/7/2022

38,225 acres as of 5/31/2022 22:37

FC Point Type	Label	Latitude WGS84 DDM	Longitude WGS84 DDM
Camp	Monica	33° 57' 48.27037" N	107° 29' 6.6228021" W
Camp	Pigeon	33° 57' 48.27037" N	107° 29' 6.6228021" W
Dip Site	Pigeon Dip	33° 57' 48.27037" N	107° 29' 6.6228021" W
Dip Site	VLA Dip Site	34° 00' 76.58714" N	107° 37' 16.19113" W
Drop Point	0	34° 04' 53.33000" N	107° 27' 13.84712" W
Drop Point	1	33° 53' 94.79428" N	107° 34' 56.25983" W
Drop Point	10	33° 49' 99.93703" N	107° 28' 35.32668" W
Drop Point	12	33° 49' 34.79999" N	107° 18' 33.30000" W
Drop Point	15	33° 47' 29.10736" N	107° 28' 19.93164" W
Drop Point	17	33° 44' 30.86916" N	107° 39' 00.21560" W
Drop Point	19	33° 41' 99.94976" N	107° 32' 8.38237" W
Drop Point	20	33° 49' 02.41361" N	107° 34' 54.62540" W
Drop Point	22	33° 43' 87.93576" N	107° 28' 22.95172" W
Drop Point	23	33° 50' 21.71715" N	107° 34' 05.38800" W
Drop Point	25	33° 51' 40.83615" N	107° 32' 51.15094" W
Drop Point	5	33° 52' 81.58200" N	107° 29' 15.66543" W
Drop Point	6	33° 53' 79.94943" N	107° 29' 28.98316" W
Helibase	Bear Trap	34° 01' 36.73652" N	107° 33' 87.27024" W
Helispot	1	33° 57' 58.70000" N	107° 29' 87.29999" W
Helispot	10	33° 54' 39.95549" N	107° 33' 28.99660" W
Helispot	20	33° 52' 69.29999" N	107° 29' 14.80000" W
Helispot	30	33° 50' 29.00000" N	107° 28' 65.00000" W
Helispot	35	33° 48' 85.76718" N	107° 22' 48.99521" W
Helispot	40	33° 51' 03.99999" N	107° 31' 50.99999" W
Helispot	50	33° 50' 13.99999" N	107° 34' 68.80000" W
Helispot	52	33° 48' 75.46758" N	107° 33' 87.79269" W
Helispot	60	33° 47' 31.73869" N	107° 28' 33.98426" W
Helispot	62	33° 48' 41.76783" N	107° 34' 44.73265" W
Helispot	63	33° 47' 49.15820" N	107° 27' 16.69473" W
Helispot	64	33° 46' 82.76027" N	107° 31' 19.23082" W
Helispot	65	33° 46' 32.76714" N	107° 34' 30.19386" W
Helispot	66	33° 43' 07.96763" N	107° 39' 11.93199" W
Helispot	68	33° 41' 87.98786" N	107° 32' 68.27275" W
Helispot	72	33° 46' 30.73671" N	107° 22' 27.90561" W
Helispot	73	33° 45' 88.21820" N	107° 25' 54.70071" W
Helispot	74	33° 45' 57.10294" N	107° 22' 36.29941" W
Helispot	Magdalena	34° 05' 98.38721" N	107° 15' 52.93939" W
Incident Command Post		34° 07' 21.69323" N	107° 14' 66.15868" W
Repeater	CMD 1	33° 59' 45.82386" N	107° 11' 27.73503" W
Repeater	CMD 2	33° 52' 84.96000" N	107° 29' 16.53997" W
Repeater	CMD 3	33° 47' 23.31540" N	107° 28' 34.65586" W



- Dip Site
- Helispot
- Division Break
- Drop Point
- Camp
- Lookout
- Hot Spot - Spot Fire
- Value at Risk
- Landmark
- Repeater
- Safety Zone
- Water Source
- Aerial Hazard Points
- Transmission Lines
- No Retardant - Aquatics
- No Retardant - Cultural
- Contained
- Uncontained
- Completed Burnout
- Completed Dozer Line
- Completed Hand Line
- Completed Road as Line
- Planned Road as Line
- Temporary Flight Restriction



GILA NATIONAL FOREST

1:50,000

Datum: North American 1983