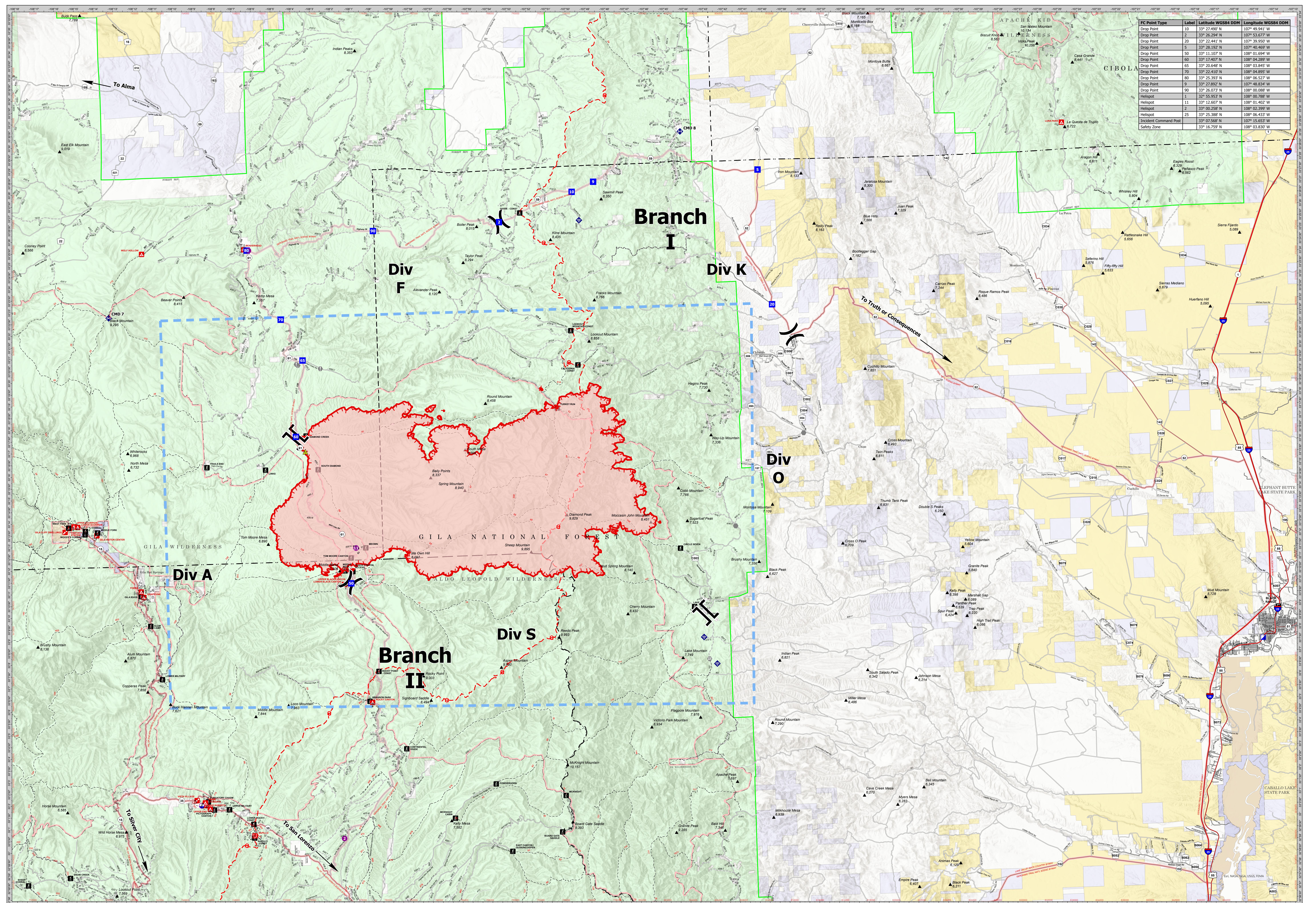


FC Point Type	Label	Latitude WGS84 DDM	Longitude WGS84 DDM
Drop Point	10	33° 27.490' N	107° 49.941' W
Drop Point	2	33° 26.294' N	107° 53.677' W
Drop Point	20	33° 22.441' N	107° 39.950' W
Drop Point	5	33° 28.192' N	107° 40.469' W
Drop Point	50	33° 11.107' N	108° 01.694' W
Drop Point	60	33° 17.467' N	108° 04.289' W
Drop Point	65	33° 20.648' N	108° 03.845' W
Drop Point	70	33° 22.410' N	108° 04.895' W
Drop Point	80	33° 25.393' N	108° 06.527' W
Drop Point	9	33° 27.892' N	107° 48.834' W
Drop Point	90	33° 26.073' N	108° 00.088' W
Helispot	1	33° 55.983' N	108° 00.788' W
Helispot	11	33° 12.607' N	108° 01.402' W
Helispot	2	33° 00.258' N	108° 02.399' W
Helispot	25	33° 25.388' N	108° 06.433' W
Incident Command Post		33° 07.568' N	107° 15.653' W
Safety Zone		33° 16.759' N	108° 03.830' W



Black
NMGNF000185
5/18/2022
TRANSPORTATION MAP

- Dip Site
- Helispot
- Division Break
- Branch Break
- Incident Command Post
- Drop Point
- Value at Risk

- Gate
- Water Development or Draft Site
- Internet Access
- Repeater
- Safety Zone

- Uncontained
- Wildfire Daily Fire Perimeter
- Access or Improved Road
- Other
- Temporary Flight Restriction

- Campground
- Group Campground
- Trailhead
- Picnic Site
- Boating Site
- Interpretive Site
- Ranger District Office

HIFLD Roads

- Primary Highway
- Secondary Highway
- Paved Roads
- Dirt (Not Paved)
- Trail

Forest Service Roads

- Paved Road
- Gravel Road
- Dirt Roads
- Unimproved Roads
- Closed Roads
- Trail

- State Public Lands
- Other State Lands
- Bureau of Land Management Lands
- National Park Service Lands
- Other Federal Lands
- Private

- Forest Service Land
- Federal Wilderness Boundary
- National Forest Boundary

Miles 0 1/4 3/4 7
Kilometers 0 1/4 3/4 7

GIS Calculated Acres from IR 77,529
As of 5/17/22 at 2114
NAD 1983 UTM Zone 12N
Created 05/18/2022 by [Name]

1:85,000

Southwest Area
Incident Management Team 5

TRANSPORTATION MAP