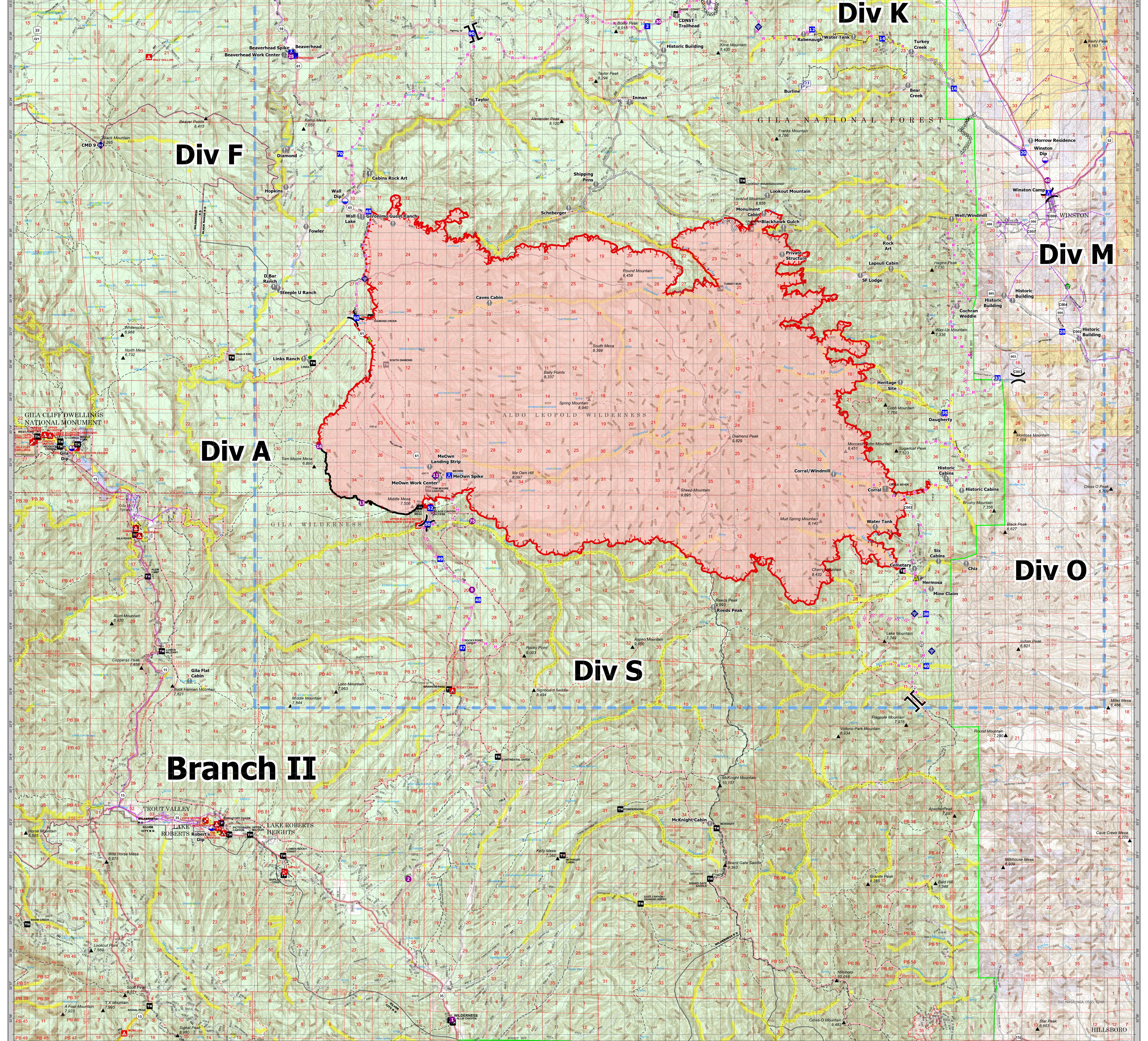


| FC Point Type                   | Label            | Latitude WGS84 DDM | Longitude WGS84 DDM |
|---------------------------------|------------------|--------------------|---------------------|
| Camp                            | Beaverhead Spike | 33° 25.488' N      | 108° 00.967' W      |
| Camp                            | McOwN Spike      | 33° 12.597' N      | 108° 00.907' W      |
| Camp                            | Winston Camp     | 33° 21.212' N      | 108° 39.031' W      |
| Dip Site                        | Gila Dip         | 33° 13.429' N      | 108° 14.673' W      |
| Dip Site                        | Robert's Dip     | 33° 01.816' N      | 108° 09.568' W      |
| Dip Site                        | Wall Dip         | 33° 20.968' N      | 108° 04.703' W      |
| Dip Site                        | Winston Dip      | 33° 22.191' N      | 108° 39.156' W      |
| Drop Point                      | 10               | 33° 27.490' N      | 107° 49.941' W      |
| Drop Point                      | 12               | 33° 26.192' N      | 107° 47.662' W      |
| Drop Point                      | 14               | 33° 25.915' N      | 107° 45.102' W      |
| Drop Point                      | 16               | 33° 24.393' N      | 107° 42.891' W      |
| Drop Point                      | 20               | 33° 26.294' N      | 107° 53.677' W      |
| Drop Point                      | 22               | 33° 22.441' N      | 107° 39.955' W      |
| Drop Point                      | 28               | 33° 16.985' N      | 107° 38.530' W      |
| Drop Point                      | 33               | 33° 15.567' N      | 107° 40.891' W      |
| Drop Point                      | 35               | 33° 14.510' N      | 107° 42.820' W      |
| Drop Point                      | 38               | 33° 08.363' N      | 107° 43.505' W      |
| Drop Point                      | 40               | 33° 06.772' N      | 107° 43.494' W      |
| Drop Point                      | 47               | 33° 07.331' N      | 108° 00.421' W      |
| Drop Point                      | 48               | 33° 06.704' N      | 107° 59.854' W      |
| Drop Point                      | 49               | 33° 10.243' N      | 108° 01.233' W      |
| Drop Point                      | 5                | 33° 28.192' N      | 107° 40.469' W      |
| Drop Point                      | 50               | 33° 11.107' N      | 108° 01.694' W      |
| Drop Point                      | 52               | 33° 11.605' N      | 108° 01.595' W      |
| Drop Point                      | 60               | 33° 17.407' N      | 108° 04.289' W      |
| Drop Point                      | 65               | 33° 20.648' N      | 108° 03.845' W      |
| Drop Point                      | 70               | 33° 22.410' N      | 108° 04.895' W      |
| Drop Point                      | 70               | 33° 25.393' N      | 108° 06.527' W      |
| Drop Point                      | 9                | 33° 27.892' N      | 107° 48.834' W      |
| Drop Point                      | 9                | 33° 26.973' N      | 107° 46.106' W      |
| HeliSpot                        | 1                | 32° 55.353' N      | 108° 00.788' W      |
| HeliSpot                        | 11               | 33° 12.607' N      | 108° 01.402' W      |
| HeliSpot                        | 13               | 33° 11.757' N      | 108° 04.095' W      |
| HeliSpot                        | 16               | 33° 13.487' N      | 108° 05.649' W      |
| HeliSpot                        | 2                | 33° 00.258' N      | 108° 02.399' W      |
| HeliSpot                        | 25               | 33° 25.376' N      | 108° 06.679' W      |
| HeliSpot                        | 30               | 33° 26.430' N      | 107° 52.268' W      |
| HeliSpot                        | 35               | 33° 28.483' N      | 107° 42.933' W      |
| HeliSpot                        | 40               | 33° 21.593' N      | 107° 39.065' W      |
| HeliSpot                        | 75               | 33° 11.202' N      | 108° 00.865' W      |
| HeliSpot                        | 8                | 33° 09.103' N      | 108° 00.073' W      |
| Incident Command Post           | 6                | 33° 07.568' N      | 107° 15.653' W      |
| Repeater                        | CMD 8            | 33° 28.590' N      | 107° 44.365' W      |
| Repeater                        | CMD 9            | 33° 22.670' N      | 108° 13.621' W      |
| Safety Zone                     |                  | 33° 16.759' N      | 108° 03.830' W      |
| Safety Zone                     |                  | 33° 09.468' N      | 107° 43.867' W      |
| Water Development or Draft Site |                  | 33° 11.114' N      | 108° 01.668' W      |
| Water Development or Draft Site |                  | 33° 18.375' N      | 107° 38.338' W      |



**Black NMGNF000185**  
5/21/2022

**AIR OPS**

|   |   |   |   |  |   |   |   |
|---|---|---|---|--|---|---|---|
| <ul style="list-style-type: none"> <li><span style="color: blue;">●</span> Dip Site</li> <li><span style="color: purple;">●</span> HeliSpot</li> <li><span style="color: red;">X</span> Division Break</li> <li><span style="color: blue;">X</span> Branch Break</li> <li><span style="color: blue;">■</span> Camp</li> <li><span style="color: blue;">■</span> Value at Risk</li> <li><span style="color: blue;">○</span> Other</li> <li><span style="color: blue;">○</span> Gate</li> <li><span style="color: green;">○</span> Water Development or Draft Site</li> <li><span style="color: green;">○</span> Repeater</li> <li><span style="color: blue;">○</span> Internet Access</li> </ul> | <ul style="list-style-type: none"> <li><span style="color: blue;">◆</span> Repeater</li> <li><span style="color: yellow;">▲</span> Safety Zone</li> <li><span style="color: red;">—</span> Completed Dozer Line</li> <li><span style="color: red;">—</span> Completed Hand Line</li> <li><span style="color: red;">—</span> Planned Hand Line</li> <li><span style="color: red;">—</span> Planned Head Construction Line</li> <li><span style="color: red;">—</span> Planned Road as Line</li> <li><span style="color: red;">—</span> Access or Improved Road</li> <li><span style="color: red;">—</span> Temporary Flight Restriction</li> <li><span style="color: red;">—</span> Contained</li> <li><span style="color: red;">—</span> Uncontained</li> <li><span style="color: red;">—</span> Wildfire Daily Fire Perimeter</li> </ul> | <ul style="list-style-type: none"> <li><span style="color: red;">▲</span> Ranger District Office</li> <li><span style="color: red;">▲</span> Campground</li> <li><span style="color: red;">▲</span> Group Campground</li> <li><span style="color: red;">▲</span> Picnic Site</li> <li><span style="color: red;">▲</span> Interpretive Site</li> <li><span style="color: red;">▲</span> Campground</li> <li><span style="color: red;">▲</span> Visitor Center</li> </ul> | <ul style="list-style-type: none"> <li><span style="color: red;">■</span> Point of Interest</li> <li><span style="color: red;">—</span> Roads</li> <li><span style="color: red;">—</span> Secondary Highway</li> <li><span style="color: red;">—</span> Dirt (Dirt Road)</li> <li><span style="color: red;">—</span> Paved Road</li> <li><span style="color: red;">—</span> Gravel Road</li> <li><span style="color: red;">—</span> Dirt Roads</li> <li><span style="color: red;">—</span> Unimproved Roads</li> <li><span style="color: red;">—</span> Trailhead</li> <li><span style="color: red;">—</span> Closed Roads</li> </ul> | <ul style="list-style-type: none"> <li><span style="color: blue;">—</span> Utility Line</li> <li><span style="color: blue;">—</span> National Designated Trail</li> <li><span style="color: blue;">—</span> Trail</li> <li><span style="color: blue;">—</span> Scenic Byway</li> </ul> | <ul style="list-style-type: none"> <li><span style="color: blue;">■</span> Freshwater Emergent Wetland</li> <li><span style="color: blue;">■</span> Freshwater Forest/Shrub Wetland</li> <li><span style="color: blue;">■</span> Freshwater Pond</li> <li><span style="color: blue;">■</span> Trailhead</li> <li><span style="color: blue;">■</span> County Subdivision Boundary</li> <li><span style="color: blue;">■</span> Census Designated Place</li> <li><span style="color: blue;">■</span> Retardant Avoidance</li> </ul> | <ul style="list-style-type: none"> <li><span style="color: green;">■</span> Land Designation</li> <li><span style="color: green;">■</span> Proclaimed FS Boundary</li> <li><span style="color: green;">■</span> Administrative FS Boundary</li> <li><span style="color: green;">■</span> Ranger District Boundary</li> <li><span style="color: green;">■</span> Federal Wilderness Boundary</li> <li><span style="color: green;">■</span> Other Designated Boundary</li> <li><span style="color: green;">■</span> Approved or Proclaimed NPS Boundary</li> <li><span style="color: green;">■</span> Area of Critical Environmental Concern</li> </ul> | <ul style="list-style-type: none"> <li><span style="color: green;">■</span> Land Ownership</li> <li><span style="color: green;">■</span> Forest Service Land</li> <li><span style="color: green;">■</span> State Public Lands</li> <li><span style="color: green;">■</span> Other State Lands</li> <li><span style="color: green;">■</span> Bureau of Land Management Lands</li> <li><span style="color: green;">■</span> National Park Service Lands</li> <li><span style="color: green;">■</span> Polyline</li> </ul> |
|---|---|---|---|--|---|---|---|

Miles 0 1 2 3 4 5 6 7

Kilometers 0 1 2 3 4 5 6 7

**SIS Calculated Acres from Mixed**  
120,785 Acres  
As of 5/20/2022 at 2200  
WGS 1984 Web Mercator Auxiliary Sphere

1:85,000

Incident Management Team 5