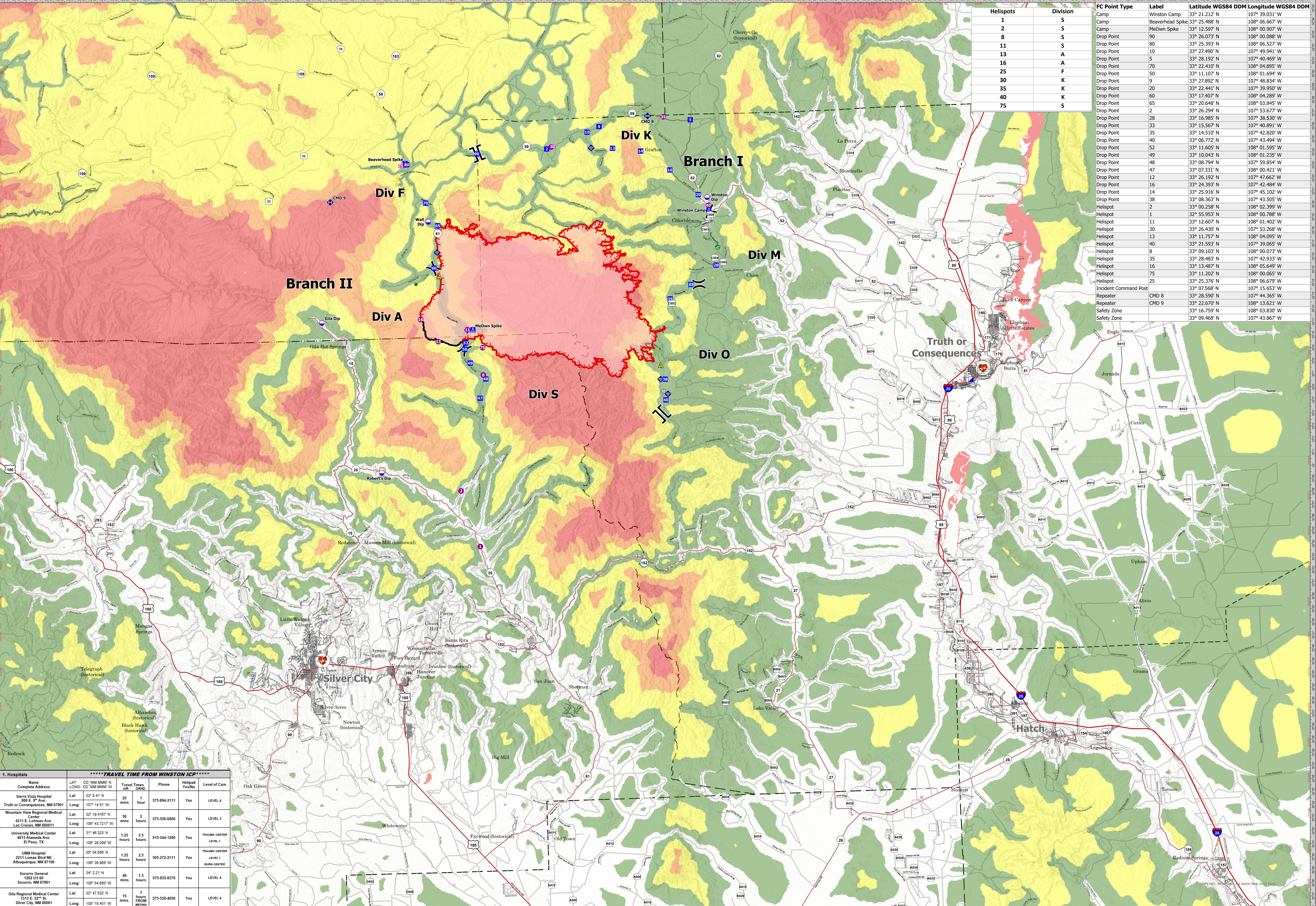


Helispots	Division	FC Point Type	Label	Latitude WGS84 DDM	Longitude WGS84 DDM
1	S	Camp	Winston Camp	33° 21.212' N	107° 39.031' W
2	S	Camp	Beaverhead Spike	33° 25.488' N	108° 06.667' W
8	S	Camp	MeOwN Spike	33° 12.597' N	108° 00.907' W
11	S	Drop Point		33° 26.073' N	108° 00.088' W
13	A	Drop Point		33° 25.393' N	108° 06.527' W
16	A	Drop Point		33° 27.490' N	107° 49.941' W
25	F	Drop Point		33° 28.192' N	108° 04.895' W
30	K	Drop Point		33° 22.441' N	107° 39.950' W
35	K	Drop Point		33° 17.407' N	108° 04.289' W
40	K	Drop Point		33° 20.648' N	108° 03.845' W
75	S	Drop Point		33° 26.294' N	107° 53.677' W
		Drop Point		33° 16.985' N	107° 38.530' W
		Drop Point		33° 15.567' N	107° 40.891' W
		Drop Point		33° 14.510' N	107° 42.820' W
		Drop Point		33° 06.772' N	107° 43.494' W
		Drop Point		33° 11.605' N	108° 01.595' W
		Drop Point		33° 10.043' N	108° 01.235' W
		Drop Point		33° 08.794' N	107° 59.854' W
		Drop Point		33° 07.331' N	108° 00.421' W
		Drop Point		33° 26.192' N	107° 47.662' W
		Drop Point		33° 24.393' N	107° 42.484' W
		Drop Point		33° 25.916' N	107° 45.102' W
		Drop Point		33° 08.363' N	108° 02.788' W
		Drop Point		33° 00.258' N	108° 02.399' W
		Drop Point		32° 55.953' N	108° 00.788' W
		Drop Point		33° 12.607' N	108° 01.402' W
		Drop Point		33° 26.430' N	107° 53.268' W
		Drop Point		33° 11.757' N	108° 04.095' W
		Drop Point		33° 21.593' N	107° 39.065' W
		Drop Point		33° 09.103' N	108° 00.073' W
		Drop Point		33° 28.483' N	107° 42.933' W
		Drop Point		33° 13.487' N	108° 05.649' W
		Drop Point		33° 11.202' N	108° 00.065' W
		Drop Point		33° 25.376' N	108° 06.679' W
		Drop Point		33° 07.568' N	107° 15.653' W
		Drop Point		33° 28.590' N	107° 44.365' W
		Drop Point		33° 22.670' N	108° 13.621' W
		Drop Point		33° 16.759' N	108° 03.830' W
		Drop Point		33° 09.468' N	107° 43.867' W
		Incident Command Post	CMD 8	33° 28.590' N	107° 44.365' W
		Repeater	CMD 9	33° 22.670' N	108° 13.621' W
		Safety Zone		33° 16.759' N	108° 03.830' W
		Safety Zone		33° 09.468' N	107° 43.867' W



Hospitals

Name	Address	LAT	LONG	Travel Time (min)	Phone	Helispot	Level of Care
Sierra Vista Hospital	800 E 3 rd Ave Truth or Consequences, NM 87901	33° 8.41' N 107° 14.51' W		25 mins 1 hour	575-894-2111	Yes	LEVEL 4
Mountain View Regional Medical Center	4311 E. Lohman Ave. Las Cruces, NM 88001	32° 16.4167' N 106° 43.7217' W		50 mins 2 hours	575-556-6800	Yes	LEVEL 3
University Medical Center	4815 Alameda Ave El Paso, TX	31° 46.323' N 106° 28.099' W		1.25 hours 2.5 hours	915-544-1200	Yes	TRAUMA CENTER LEVEL 1
UNM Hospital	2211 Lomas Blvd NE Albuquerque, NM 87106	35° 04.956' N 106° 36.965' W		1.25 hours 2.5 hours	505-272-2111	Yes	TRAUMA CENTER BURN CENTER
Socorro General	1202 US 69 Socorro, NM 87801	34° 2.21' N 106° 54.650' W		40 mins 1.5 hours	575-835-8370	Yes	LEVEL 4
Gila Regional Medical Center	1313 E. 32 nd St Silver City, NM 88061	32° 47.532' N 106° 15.401' W		15 mins 3 hours FROM SILVER CITY	575-538-4050	Yes	LEVEL 4

Black
 NMGNF000185
 5/21/2022
MEDICAL TRANSPORT MAP

Legend

- Air Operations**
 - Dip Site
 - Helispot
 - Assignment Breaks
 - Division Break
- Logistics**
 - Incident Command Post
 - Drop Point
 - Camp
- Reference**
 - Other
 - Gate
- Repair**
 - Water Development or Draft Site
 - Repair Point
- Communications**
 - Internet Access
 - Repeater
 - Safety
 - Safety Zone
- FC Line Type**
 - Contained
 - Uncontained
 - Wildfire Daily Fire Perimeter
 - HIFLD Roads
 - Primary Highway
- Secondary Highway**
- Paved Roads**
- Dirt (Not Paved)**
- County Boundary**
- Estimated Ground Evacuation Time (Fine)**
 - 1 to 2 Hours
 - 2 to 4 Hours
 - 4 to 6 Hours
 - More than 6 Hours
- MedicalEvoc_Hospitals**

Scale: 0 to 13 Miles / 0 to 13 Kilometers

GIS Calculated Acres from Mixed Methods
 As of 5/20/2022 at 2200
 NAD 1983 UTM Zone 12N
 1:156,250

Southwest Area Incident Management Team 5