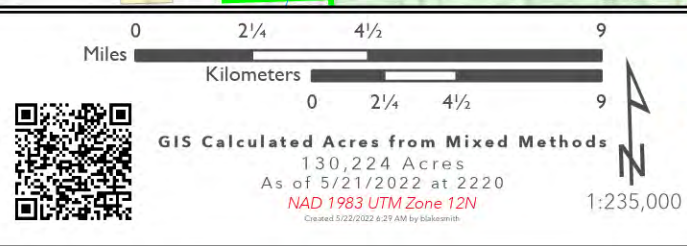


Black
 NMGNF000185
 5/22/2022

PILOT



FC Point Type	Label	Latitude WGS84 DDM	Longitude WGS84 DDM
Camp	Beaverhead Spike	33° 25.488' N	108° 06.667' W
Camp	MeOwn Spike	33° 12.597' N	108° 00.907' W
Camp	Winston Camp	33° 21.212' N	107° 39.031' W
Dip Site	Dry Lake	33° 09.926' N	108° 07.186' W
Dip Site	Gila Dip	33° 13.429' N	108° 14.673' W
Dip Site	Peterson	33° 19.100' N	107° 39.102' W
Dip Site	Robert's Dip	33° 01.816' N	108° 09.568' W
Dip Site	Wall Dip	33° 20.968' N	108° 04.703' W
Dip Site	Winston Dip	33° 22.219' N	107° 39.156' W
Drop Point	10	33° 27.490' N	107° 49.941' W
Drop Point	12	33° 26.192' N	107° 47.662' W
Drop Point	14	33° 25.916' N	107° 45.102' W
Drop Point	16	33° 24.393' N	107° 42.484' W
Drop Point	2	33° 26.294' N	107° 53.677' W
Drop Point	20	33° 22.441' N	107° 39.950' W
Drop Point	28	33° 16.985' N	107° 38.530' W
Drop Point	33	33° 15.567' N	107° 40.891' W
Drop Point	35	33° 14.510' N	107° 42.820' W
Drop Point	38	33° 08.363' N	107° 43.505' W
Drop Point	40	33° 06.772' N	107° 43.494' W
Drop Point	47	33° 07.331' N	108° 00.421' W
Drop Point	48	33° 08.794' N	107° 59.854' W
Drop Point	49	33° 10.043' N	108° 01.235' W
Drop Point	5	33° 28.192' N	107° 40.469' W
Drop Point	50	33° 11.107' N	108° 01.694' W
Drop Point	52	33° 11.605' N	108° 01.595' W
Drop Point	60	33° 17.407' N	108° 04.289' W
Drop Point	65	33° 20.648' N	108° 03.845' W
Drop Point	70	33° 22.410' N	108° 04.895' W
Drop Point	80	33° 25.393' N	108° 06.527' W
Drop Point	9	33° 27.892' N	107° 48.834' W
Drop Point	90	33° 26.073' N	108° 00.088' W
Drop Point	99	33° 21.726' N	107° 54.867' W
Helispot	1	32° 55.953' N	108° 00.788' W
Helispot	11	33° 12.607' N	108° 01.402' W
Helispot	13	33° 11.757' N	108° 04.095' W
Helispot	16	33° 13.487' N	108° 05.649' W
Helispot	2	33° 00.258' N	108° 02.399' W
Helispot	25	33° 25.376' N	108° 06.679' W
Helispot	30	33° 26.430' N	107° 53.268' W
Helispot	35	33° 28.483' N	107° 42.933' W
Helispot	40	33° 21.593' N	107° 39.065' W
Helispot	75	33° 11.202' N	108° 00.065' W
Helispot	8	33° 09.103' N	108° 00.073' W
Safety Zone		33° 16.759' N	108° 03.830' W
Safety Zone		33° 09.468' N	107° 43.867' W
Water Development or Draft Site		33° 11.114' N	108° 01.668' W
Water Development or Draft Site		33° 18.375' N	107° 38.338' W