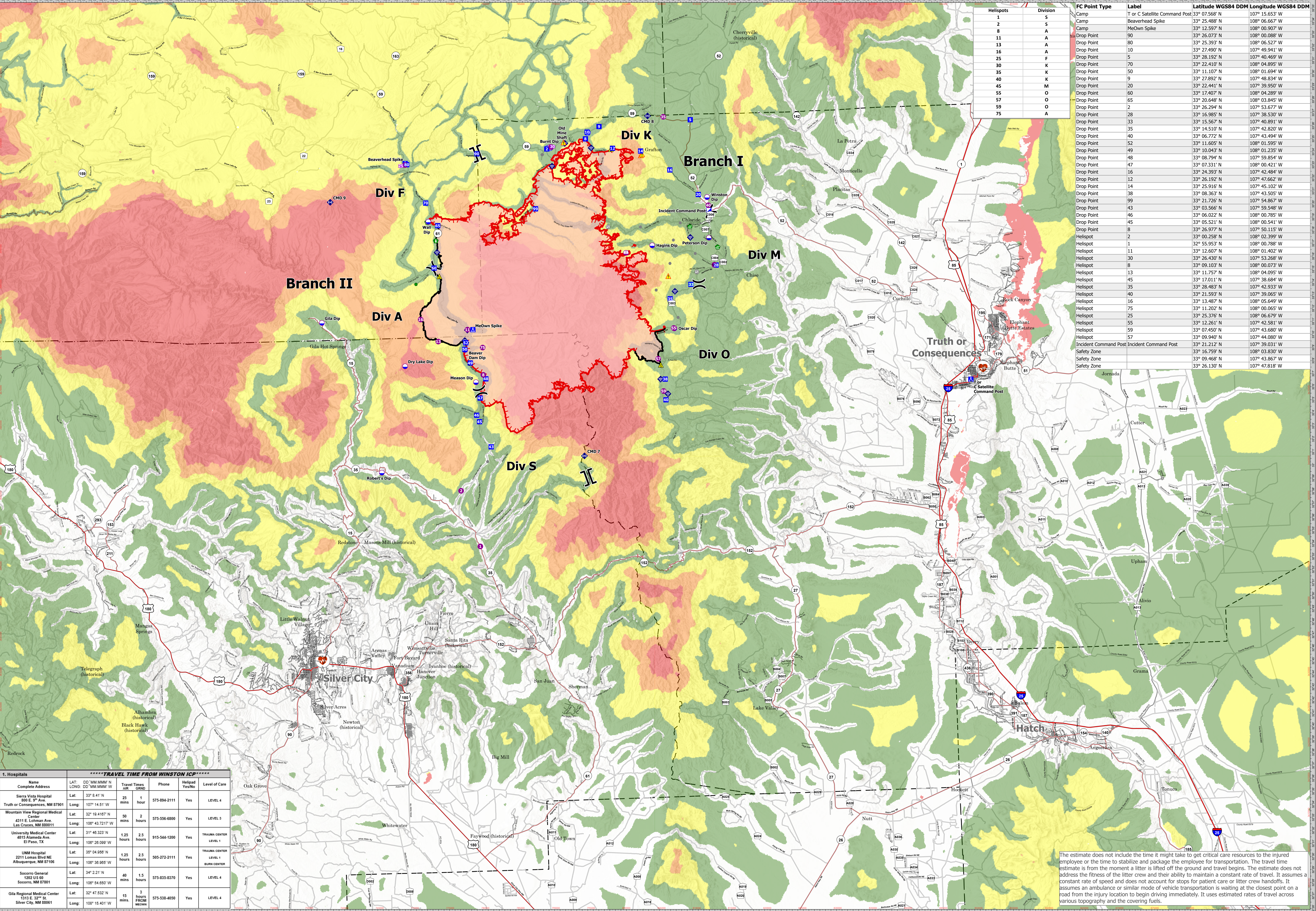


Helispots	Division	FC Point Type	Label	Latitude WGS84 DDM	Longitude WGS84 DDM
1	S	Camp	T or C Satellite Command Post	33° 07.568' N	107° 15.653' W
2	S	Camp	Beaverhead Spike	33° 25.488' N	108° 06.667' W
8	A	Camp	McOwn Spike	33° 12.927' N	108° 00.907' W
11	A	Drop Point		33° 26.073' N	108° 00.088' W
13	A	Drop Point		33° 25.393' N	108° 06.527' W
16	A	Drop Point		33° 27.490' N	107° 49.941' W
25	F	Drop Point		33° 22.410' N	107° 40.469' W
30	K	Drop Point		33° 11.107' N	108° 01.694' W
35	K	Drop Point		33° 27.892' N	107° 48.834' W
40	K	Drop Point		33° 22.410' N	107° 39.950' W
45	M	Drop Point		33° 17.407' N	108° 04.289' W
55	O	Drop Point		33° 20.648' N	108° 03.845' W
57	O	Drop Point		33° 26.294' N	107° 53.677' W
59	O	Drop Point		33° 16.985' N	107° 38.530' W
75	A	Drop Point		33° 15.567' N	107° 40.891' W
		Drop Point		33° 14.510' N	107° 42.820' W
		Drop Point		33° 06.772' N	107° 43.494' W
		Drop Point		33° 11.605' N	108° 01.595' W
		Drop Point		33° 10.043' N	108° 01.235' W
		Drop Point		33° 08.794' N	107° 59.854' W
		Drop Point		33° 07.331' N	108° 00.421' W
		Drop Point		33° 24.393' N	107° 42.484' W
		Drop Point		33° 26.192' N	107° 47.662' W
		Drop Point		33° 25.916' N	107° 45.102' W
		Drop Point		33° 08.363' N	107° 43.505' W
		Drop Point		33° 21.726' N	107° 54.867' W
		Drop Point		33° 03.566' N	107° 59.548' W
		Drop Point		33° 06.022' N	108° 00.785' W
		Drop Point		33° 05.521' N	108° 00.541' W
		Drop Point		33° 26.977' N	107° 50.115' W
		Helispot		33° 00.258' N	108° 02.399' W
		Helispot		32° 55.953' N	108° 00.788' W
		Helispot		33° 12.607' N	108° 01.402' W
		Helispot		33° 26.430' N	107° 53.268' W
		Helispot		33° 09.103' N	108° 00.073' W
		Helispot		33° 11.757' N	108° 04.095' W
		Helispot		33° 17.011' N	107° 38.684' W
		Helispot		33° 28.483' N	107° 42.933' W
		Helispot		33° 21.593' N	107° 39.065' W
		Helispot		33° 13.487' N	108° 05.649' W
		Helispot		33° 11.202' N	108° 00.065' W
		Helispot		33° 25.376' N	108° 06.679' W
		Helispot		33° 12.261' N	107° 42.581' W
		Helispot		33° 07.450' N	107° 43.680' W
		Helispot		33° 09.940' N	107° 44.080' W
		Incident Command Post	Incident Command Post	33° 21.212' N	107° 39.031' W
		Safety Zone		33° 16.759' N	108° 03.830' W
		Safety Zone		33° 09.468' N	107° 43.867' W
		Safety Zone		33° 26.130' N	107° 47.818' W



**1. Hospitals**

Name	Complete Address	LAT. LONG.	Travel Time (min)	Phone	Helispot	Level of Care
Sierra Vista Hospital	800 E. 3 <sup>rd</sup> Ave. Truth or Consequences, NM 87901	Lat: 33° 8.41' N Long: 107° 14.51' W	25 mins 1 hour	575-934-2111	Yes	LEVEL 4
Mountain View Regional Medical Center	4311 E. Lohman Ave. Las Cruces, NM 88001	Lat: 32° 16.4167' N Long: 106° 43.7217' W	50 mins 2 hours	575-556-6800	Yes	LEVEL 3
University Medical Center	4815 Alameda Ave. El Paso, TX	Lat: 31° 46.323' N Long: 106° 28.099' W	1.25 hours 2.5 hours	915-544-1200	Yes	TRAUMA CENTER LEVEL 1
UNM Hospital	2211 Lomas Blvd NE Albuquerque, NM 87106	Lat: 35° 04.956' N Long: 106° 36.965' W	1.25 hours 2.5 hours	505-272-2111	Yes	TRAUMA CENTER LEVEL 1 BURN CENTER
Socorro General	1302 US 69 Socorro, NM 87801	Lat: 34° 2.21' N Long: 106° 54.650' W	40 mins 1.5 hours	575-835-8370	Yes	LEVEL 4
Gila Regional Medical Center	1313 E. 32 <sup>nd</sup> St. Silver City, NM 88061	Lat: 32° 47.532' N Long: 106° 15.401' W	15 mins 3 hours FROM Silver City	575-538-4050	Yes	LEVEL 4

The estimate does not include the time it might take to get critical care resources to the injured employee or the time to stabilize and package the employee for transportation. The travel time estimate is from the moment a litter is lifted off the ground and travel begins. The estimate does not address the fitness of the litter crew and their ability to maintain a constant rate of travel. It assumes a constant rate of speed and does not account for stops for patient care or litter crew handoffs. It assumes an ambulance or similar mode of vehicle transportation is waiting at the closest point on a road from the injury location to begin driving immediately. It uses estimated rates of travel across various topography and the covering fuels.

# Black

NMGNF000185  
5/27/2022  
MEDICAL TRANSPORT MAP

<b>Air Operations</b> Dip Site Helispot Sling Site <b>Assignment Breaks</b> Division Break	<b>Logistics</b> Incident Command Post Drop Point Camp <b>Branch Break</b> Branch Break	<b>Reference</b> Other Gate <b>Repair</b> Water Development or Draft Site Repair Point Hazard Tree	<b>Communications</b> Internet Access Repeater <b>Safety</b> Safety Zone Hazard	<b>Water</b> Water Source <b>FC Line Type</b> Contained Uncountained <b>Polygon Type</b> Wildfire Daily Fire Perimeter	<b>HIFLD Roads</b> Primary Highway Secondary Highway Paved Roads Dirt (Not Paved) County Boundary	<b>Estimated Ground Evacuation Time (Fine)</b> 1 to 2 Hours 2 to 4 Hours 4 to 6 Hours More than 6 Hours Medical/Evac Hospitals	 0 3/4 6 13 Miles 0 3/4 6 13 Kilometers	 <b>GIS Calculated</b> <b>Acres from Mixed Methods</b> 185,234 As of 5/26/2022 at 1000 MAD 1983 UTM Zone 12N Created 5/26/2022 8:08 PM by [Name]	 Incident Management Team 5 1:156,250 MEDICAL TRANSPORT MAP
---	--	--	--	--	--	---	---	--	--