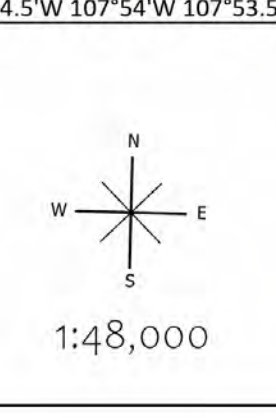


Ops - Div O
 Black NMNCF00185
 6/1/2022
 358,062 acres as of 6/1/2022 1124 MDT
 Acres from IR, NAD 1983 2011 Datum, LatLong Grid



- | | | | |
|---|--|--|--|
| <ul style="list-style-type: none"> ● Dip Site ● Helispot ⊗ Sling Site ⊗ Division Break ● Drop Point ⊗ Value at Risk ● Other ● Gate ● Water Development or Draft Site ⊗ Internet Access ● Repeater ▲ Safety Zone | <ul style="list-style-type: none"> ▲ Hazard ▲ Wildfire Daily Fire Perimeter ● Mines ● Utility Lines ⊗ Other Property ⊗ Pump ⊗ Water Tank ⊗ Completed Dozer Line ⊗ Completed Hand Line ⊗ Completed Mixed Construction Line ⊗ Completed Road as Line ⊗ Planned Dozer Line ⊗ Planned Hand Line ⊗ Planned Mixed Construction Line ⊗ Planned Road as Line ⊗ Planned Secondary Line ⊗ Access or Improved Road ⊗ Temporary Flight Restriction | <ul style="list-style-type: none"> ⊗ Contained ⊗ Uncontained ⊗ National Designated Trail ⊗ Trail ⊗ National Designated Trail ⊗ Secondary Highway ⊗ Paved Roads ⊗ Dirt (Not Paved) ⊗ Dirt Roads ⊗ Unimproved Roads ⊗ Closed Roads ⊗ Firehistory ⊗ 2013 Silver Fire ⊗ Buildings ⊗ TNM Derived Names ⊗ Summit, Gap ⊗ FS Common Unit Names ⊗ GNIS Populated Places Some ⊗ Trailhead ⊗ Spring/Seep ⊗ Waterfall ⊗ Well ⊗ Nonearthen Shore ⊗ Inundation Area ⊗ Wash ⊗ Stream/River; Artificial Path ⊗ Canal / Ditch ⊗ Pipeline ⊗ Stream/River Intermittent ⊗ Proclaimed FS Boundary ⊗ Administrative FS Boundary ⊗ Ranger District Boundary ⊗ Federal Wilderness Boundary ⊗ State Boundary ⊗ County Boundary ⊗ County Subdivision Boundary ⊗ Lake / Pond ⊗ Lake / Pond (Intermittent) ⊗ Reservoir ⊗ Township ⊗ Protracted Section ⊗ Section ⊗ Depression Intermediate ⊗ Normal Index ⊗ Normal Intermediate ⊗ Freshwater Emergent Wetland ⊗ Freshwater Forested/Shrub Wetland ⊗ Freshwater Pond ⊗ Tollway ⊗ Scenic Byway ⊗ Other State Lands ⊗ Bureau of Land Management Lands ⊗ Private; Local Government; Undesignated ⊗ Forest Service Land | <ul style="list-style-type: none"> ⊗ World Hillshade ⊗ Federal Wilderness Boundary |
|---|--|--|--|

SOUTHWEST AREA

INCIDENT MANAGEMENT TEAM 3