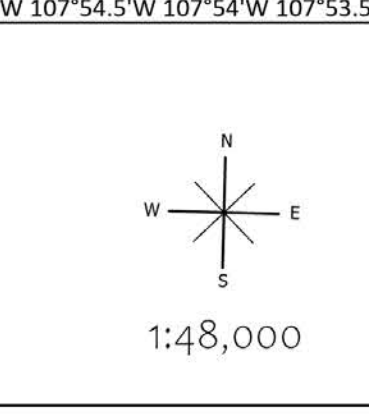


**Ops - Div O**  
 Black  
 NMNCF00185  
 6/2/2022  
 262,695 acres as of 6/1/22 21:54 MDT  
 Acres from IR, NAD 1983 datum, Datums, Longrid



● Dip Site	● Other	▲ Hazard	⊡ Pump	⊡ Planned Dozer Line	⊡ Temporary Flight Restriction	⊡ Secondary Highway	⊡ Firehistory	⊡ Proclaimed FS Boundary	⊡ County Subdivision Boundary	⊡ Section	⊡ Freshwater Pond	⊡ Forest Service Land
● Helispot	● Gate	▲ Water Source	⊡ Water Tank	⊡ Planned Mixed Construction Line	⊡ Contained	⊡ Paved Road	⊡ 2013 Silver Fire	⊡ Administrative FS Boundary	⊡ Lake / Pond	⊡ Depression Intermediate	⊡ Tollway	⊡ World Hillshade
⊡ Sling Site	⊡ Water Development or Draft Site	⊡ Wildfire Daily Fire Perimeter	⊡ Completed Dozer Line	⊡ Planned Road as Line	⊡ Uncontained	⊡ DIRT (Not Paved)	⊡ Buildings	⊡ Ranger District Boundary	⊡ Lake / Pond (Intermittent)	⊡ Normal Index	⊡ Scenic Byway	⊡ Federal Wilderness Boundary
⊡ Division Break	⊡ Internet Access	⊡ Mines	⊡ Completed Mixed Construction Line	⊡ Planned Secondary Line	⊡ National Designated Trail	⊡ DIRT Roads	⊡ TNM Derived Names	⊡ Federal Wilderness Boundary	⊡ Reservoir	⊡ Normal Intermediate	⊡ Other State Lands	⊡ Bureau of Land Management Lands
⊡ Drop Point	⊡ Repeater	⊡ Utility Lines	⊡ Completed Road as Line	⊡ Access or Improved Road	⊡ Trail	⊡ Unimproved Roads	⊡ Summit; Gap	⊡ State Boundary	⊡ Pipeline	⊡ Freshwater Emergent Wetland	⊡ Private; Local Government; Undesignated	⊡ Private; Local Government; Undesignated
⊡ Value at Risk	⊡ Safety Zone	⊡ Other Property			⊡ National Designated Trail	⊡ Closed Roads	⊡ FS Common Unit Names	⊡ County Boundary	⊡ Stream/River Intermittent	⊡ Freshwater Forested/Shrub Wetland		
									⊡ Inundation Area			
									⊡ Wash			
									⊡ Stream/River; Artificial Path			
									⊡ Canal / Ditch			
									⊡ Waterfall			
									⊡ Well			
									⊡ Nonnearshore			
									⊡ GNS Populated Places Some			

**SOUTHWEST AREA**  
 INCIDENT MANAGEMENT TEAM 3