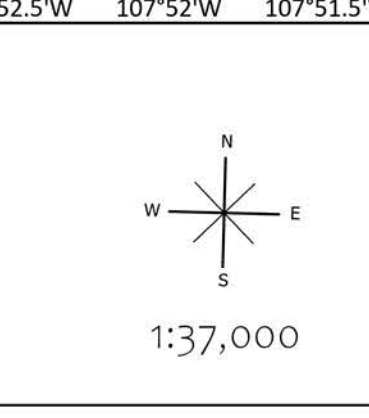


Ops - Div M
 Black
 NMNF00185
 6/3/2022
 364,657 acres as of 6/22/2022 10:23 MDT
 Acres from IR, NAD 1983 2011 Datum, Lat/Long Grid



<ul style="list-style-type: none"> Dip Site Helispot Sling Site Division Break Drop Point Camp 	<ul style="list-style-type: none"> Value at Risk Other Gate Water Development or Draft Site Fence - Cut/Damaged Internet Access 	<ul style="list-style-type: none"> Repeater Safety Zone Hazard Wildfire Daily Fire Perimeter Mines Camp Utility Lines 	<ul style="list-style-type: none"> Other Property Pump Water Tank Completed Dozer Line Completed Hand Line Completed Mixed Construction Line 	<ul style="list-style-type: none"> Access or Improved Road Temporary Flight Restriction Contained Uncontained IR Heat Perimeter IR Intense Heat 	<ul style="list-style-type: none"> Dirt (Not Paved) Paved Road Dirt Roads Unimproved Roads Closed Roads FireHistory 	<ul style="list-style-type: none"> 2013 Silver Fire Buildings TNM Derived Names Summit; Gap FS Common Unit Names GNIS Populated Places Some 	<ul style="list-style-type: none"> Trailhead Spring/Seep Waterfall Well Stream/River Intermittent Proclaimed FS Boundary Administrative FS Boundary 	<ul style="list-style-type: none"> Ranger District Boundary Federal Wilderness Boundary State Boundary County Subdivision Boundary Lake / Pond 	<ul style="list-style-type: none"> Lake / Pond (Intermittent) Reservoir Freshwater Emergent Wetland Freshwater Forested/Shrub Wetland Freshwater Pond Tollway Scenic Byway 	<ul style="list-style-type: none"> Other State Lands Bureau of Land Management Lands Private; Local Government; Undesignate Forest Service Land World Hillshade Federal Wilderness Boundary
--	---	--	--	---	---	---	--	---	---	---

SOUTHWEST AREA
 INCIDENT MANAGEMENT TEAM 3