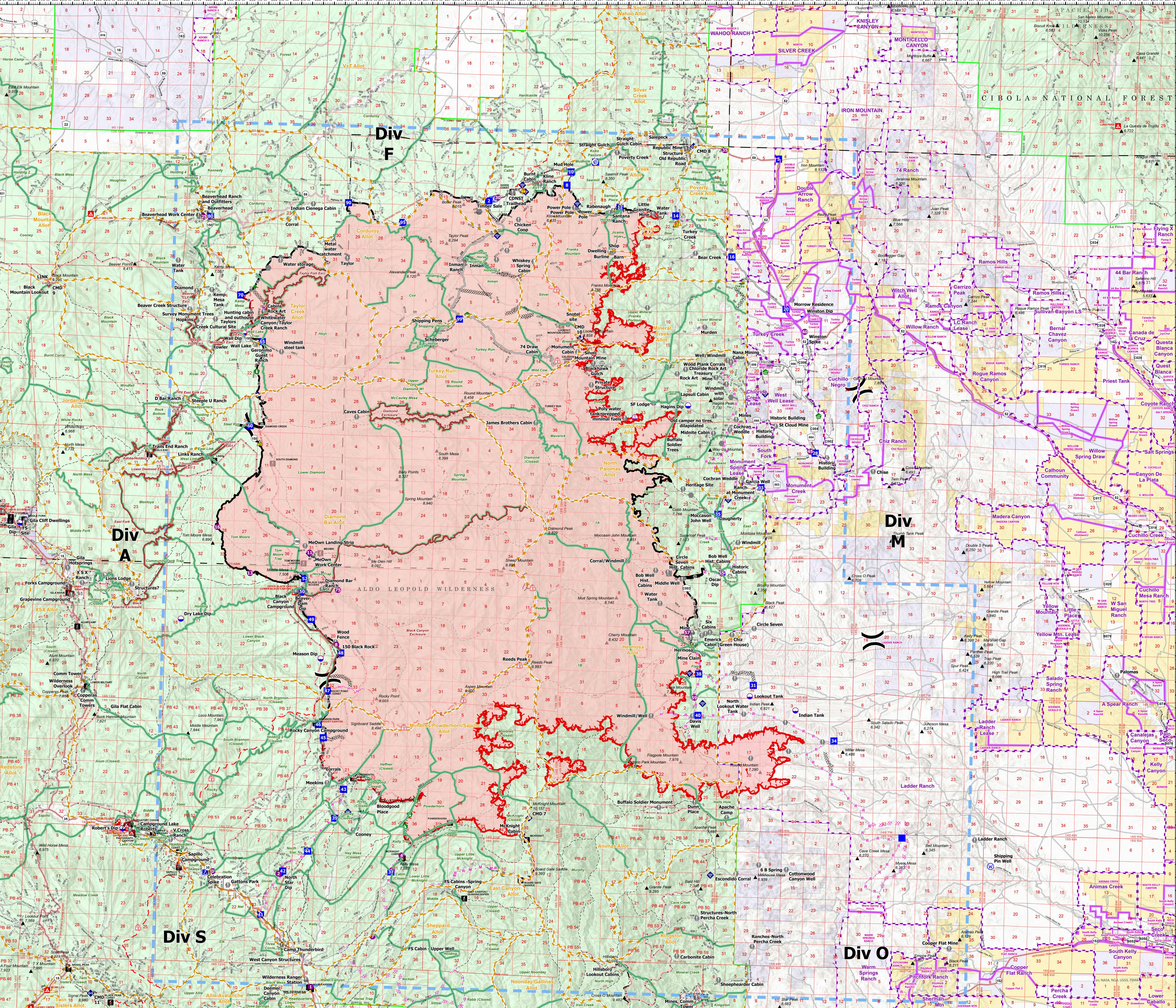


FS Pastures and Allotments		BLM Pastures and Allotments		
NAME	ALLOTMENT_NAME	Acres Burned	NAME	Acres Burned
Hells Hole	Animas	620	Animas	1038
Animas	Animas	369	Corduroy	26788
Murphy	Animas	48	Diamond Bar	95701
Burnt Cabin	Corduroy	2727	Hermosa	46772
Cox	Corduroy	4706	Mimbres/Powderhorn/Sapillo	23660
Holding 2	Corduroy	125	Mineral Creek	2389
Holding 3	Corduroy	48	North Palomas	4439
Holding 4	Corduroy	27	Pine Creek	452
Indian	Corduroy	415	Santana	9024
Inman	Corduroy	11955	South Fork	17131
Inman Horse	Corduroy	160	Taylor Creek	16839
Taylor	Corduroy	6544	Taylor Run	19546
Black Canyon Enclosure	Diamond Bar	4294	V-T	
Diamond Enclosure	Diamond Bar	1364		
Horse Trap	Diamond Bar	875		
Lower Black Canyon	Diamond Bar	8		
Lower Diamond	Diamond Bar	25617		
McCauley Mesa	Diamond Bar	2528		
Spring Mountain	Diamond Bar	16531		
Tom Moore	Diamond Bar	808		
Tom Moore Trap	Diamond Bar	808		
1A	Hermosa	5165		
2	Hermosa	23946		
2	Hermosa	9857		
Flag	Hermosa	665		
Hermosa	Hermosa	6237		
Reeds	Hermosa	311		
Whitmore	Hermosa	471		
Bloodgood (Closed)	Mimbres/Powderhorn/Sapillo	163		
Hay Mesa (Closed)	Mimbres/Powderhorn/Sapillo	111		
Hefner (Closed)	Mimbres/Powderhorn/Sapillo	4896		
Kelly Trap	Mimbres/Powderhorn/Sapillo	54		
McKnight (Closed)	Mimbres/Powderhorn/Sapillo	3199		
Mimbres (Closed)	Mimbres/Powderhorn/Sapillo	8039		
Powderhorn	Mimbres/Powderhorn/Sapillo	2809		
Tory	Mimbres/Powderhorn/Sapillo	4341		
Tout (Closed)	Mimbres/Powderhorn/Sapillo	1364		
Upper Mineral (Franks Portion)	Mineral Creek	2389		
Upper	North Palomas	4439		
Sawmill	Pine Creek	452		
Bear	Santana	1649		
Franks Mountain	Santana	6470		
Jamaa Hole	Santana	810		
Santana Place	Santana	42		
Diamond (Closed)	South Fork	6629		
Higgins	South Fork	99		
Lodge	South Fork	7617		
Hawick	South Fork	2786		
Hoyt	Taylor Creek	12551		
Kemp Mesa	Taylor Creek	810		
Lake	Taylor Creek	287		
Taylor Fish Excl.	Taylor Creek	1329		
Wall Lake Trap	Taylor Creek	352		
Breeding	Turkey Run	2850		
Bull	Turkey Run	118		
Holding	Turkey Run	56		
Horse	Turkey Run	97		
PVT	Turkey Run	28		
Round Mountain	Turkey Run	2630		
Shipping	Turkey Run	542		
Sliver	Turkey Run	2495		
Turkey Run	Turkey Run	6579		
Upper Dry Diamond WI	Turkey Run	6		
Wild Cow	Turkey Run	501		
Winter	Turkey Run	3453		
Boiler	V-T	1223		

BLM Pastures and Allotments	
Pasture Name	Acres Burned
LADDER RANCH	3559

Range Allotments

Black
NMCNFO0185
6/4/2022
268,218 acres as of 6/3/22 2048 MDT
Acres from IR
North American 1983 Datum, Lat Long Grid



<ul style="list-style-type: none"> Event Point Dip Site Helispot Sling Site Division Break Drop Point Camp Value at Risk Other Water Development or Draft Site Repair Point Hazard Tree Fence - Cut/Damaged Dozer Push Internet Access Repeater Safety Zone Hazard Tree Fence - Cut/Damaged Dozer Push Internet Access Repeater Safety Zone 	<ul style="list-style-type: none"> Event Line Completed Dozer Line Completed Hand Line Completed Mixed Construction Line Completed Road as Line Planned Dozer Line Planned Hand Line Planned Mixed Construction Line Planned Road as Line Access or Improved Road Other 	<ul style="list-style-type: none"> Geo-Political Boundaries County Boundary State Public Lands Other State Lands Bureau of Land Management Lands National Park Service Lands Private Forest Service Land 	<ul style="list-style-type: none"> Recreation Ranger District Office Campground Group Campground Trailhead Picnic Site Boating Site Interpretive Site 	<ul style="list-style-type: none"> Range Management Units BLM Pasture BLM Allotment FS Pasture FS Enclosure FS Allotment Public Land Survey System Township Protected Section Section Unimproved Roads Closed Roads Forest Service Roads Paved Road Gravel Road Dirt Roads Group Campground Trailhead Picnic Site Boating Site Interpretive Site BLM Pasture BLM Allotment FS Pasture FS Enclosure FS Allotment Township Protected Section Section Unimproved Roads Closed Roads Paved Road Gravel Road Dirt Roads Group Campground Trailhead Picnic Site Boating Site Interpretive Site 	<ul style="list-style-type: none"> HIFLD Roads Secondary Highway Paved Roads Dirt (Not Paved)
--	--	--	---	---	---

Scale: 1:85,000

SWITCH AREA
INCIDENT MANAGEMENT TEAM 3