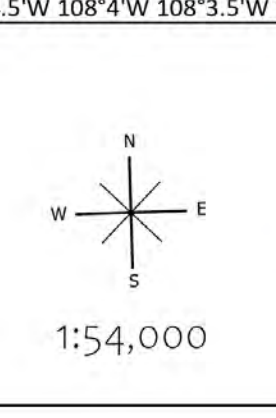


# Operations South

Black  
 NIMCAN F00185  
 6/6/2022  
 282,189 acres as of 6/15/2022 11:00 MDT  
 Acres from IR  
 North American 1983 Datum, LatLong Grid



<ul style="list-style-type: none"> <li>Dip Site</li> <li>Value of Risk</li> <li>Helipad</li> <li>Division Break</li> <li>Drop Point</li> <li>Camp</li> <li>Lookout</li> </ul>	<ul style="list-style-type: none"> <li>Mobile Weather Unit</li> <li>Landmark</li> <li>Water Development or Draft Site</li> <li>Fence - Cut/Damaged</li> </ul>	<ul style="list-style-type: none"> <li>Dazer Push</li> <li>Internet Access</li> <li>Repeater</li> <li>Safety Zone</li> <li>Water Source</li> </ul>	<ul style="list-style-type: none"> <li>Wildfire Daily Fire Perimeter</li> <li>Utility Lines</li> <li>Label Point</li> <li>Completed Dazer Line</li> <li>Completed Hand Line</li> </ul>	<ul style="list-style-type: none"> <li>Completed Mixed Construction Line</li> <li>Temporary Flight Restriction</li> <li>Contained</li> <li>Uncontained</li> <li>National Designated Trail</li> <li>Trail</li> </ul>	<ul style="list-style-type: none"> <li>Access or Improved Road</li> <li>National Designated Trail</li> <li>Paved Roads</li> <li>Dirt (Not Paved)</li> <li>Paved Road</li> </ul>	<ul style="list-style-type: none"> <li>Gravel Road</li> <li>Dirt Road</li> <li>Unimproved Roads</li> <li>Closed Roads</li> <li>Railroad</li> <li>Firehistory</li> </ul>	<ul style="list-style-type: none"> <li>2013 Silver Fire</li> <li>Buildings</li> <li>Summit: Crap</li> <li>FS Common Unit Names</li> <li>GNIS Populated Places Some</li> </ul>	<ul style="list-style-type: none"> <li>Ranger District Office</li> <li>Campground</li> <li>Group Campground</li> <li>Trailhead</li> <li>Picnic Site</li> <li>Caging Station</li> <li>Sink/Rise</li> <li>Spring/Seep</li> <li>Well</li> <li>Dam / Weir</li> <li>Nonearthen Shore</li> </ul>	<ul style="list-style-type: none"> <li>Inundation Area</li> <li>Stream / River</li> <li>Wash</li> <li>Stream/River, Artificial Path</li> <li>Canal / Ditch</li> <li>Pipeline Underground</li> <li>Stream/River Intermittent</li> <li>Proclaimed FS Boundary</li> <li>Administrative FS Boundary</li> <li>Ranger District Boundary</li> <li>Federal Wilderness Boundary</li> <li>State Boundary</li> </ul>	<ul style="list-style-type: none"> <li>County Boundary</li> <li>County Subdivision Boundary</li> <li>Lake / Pond</li> <li>Lake / Pond (Intermittent)</li> <li>Reservoir</li> <li>Protracted Section</li> <li>Section</li> <li>Freshwater Forested/Shrub Wetland</li> <li>Freshwater Emergent Wetland</li> <li>Freshwater Forested/Strub Wetland</li> <li>Freshwater Pond</li> <li>Tollway</li> <li>Scenic Byway</li> <li>Ladder Area Roads</li> </ul>
---	---	--	--	---	---	---	---	--	---	---