

Div O

Div Z

Div R

Div Y

Ladder Ranch Boundary (Estimate)
Z-Cattle Boundary (Estimate)

Repair Status

- In Use - Fire Management
- Needs Assessment
- Repair Needed
- In Progress
- Completed - Ready for Inspection
- Completed - Inspected
- No Repair Needed
- Other - See Comments

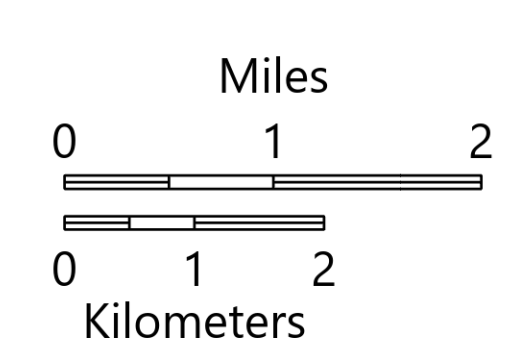
Repair Status

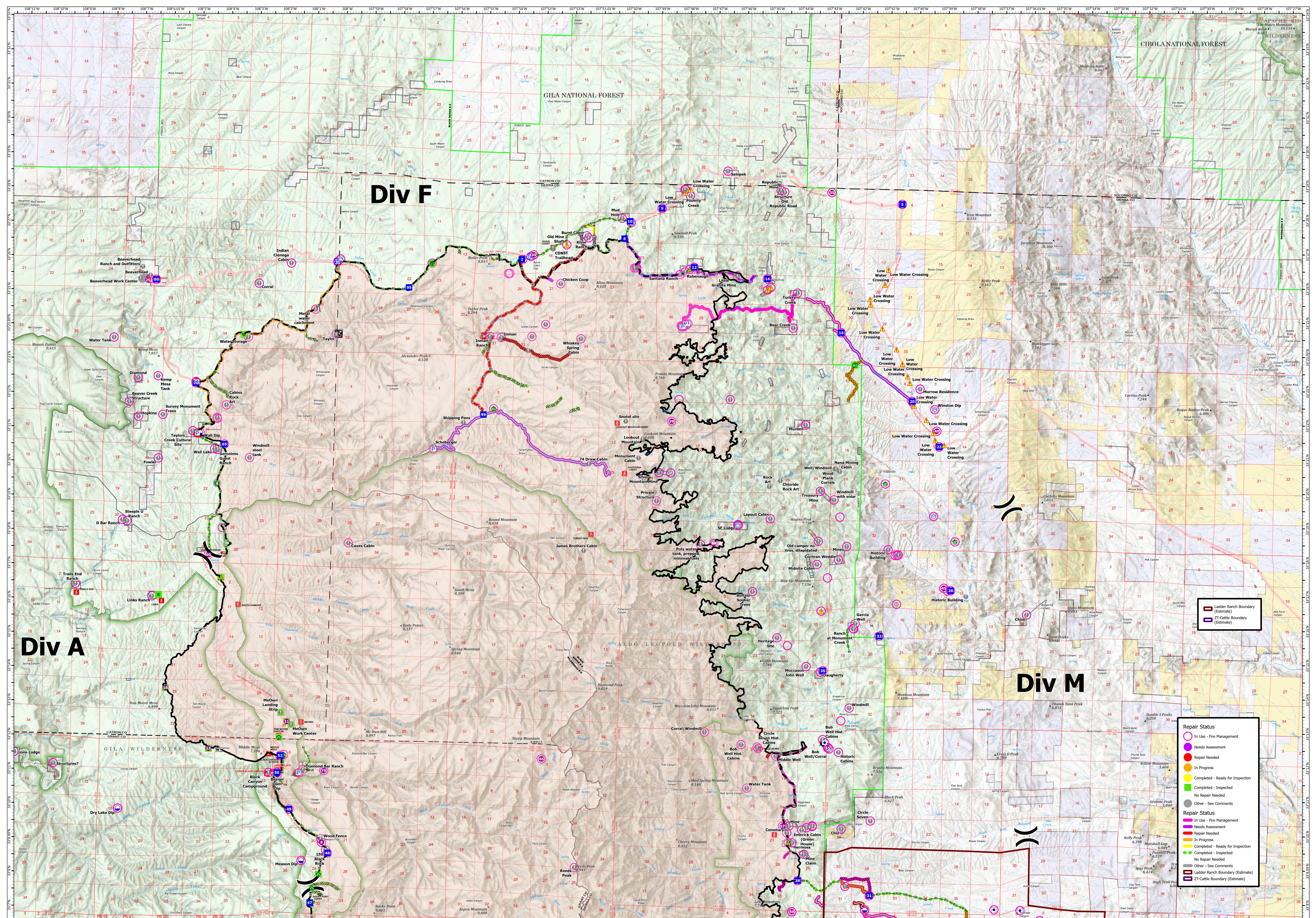
- In Use - Fire Management
- Needs Assessment
- Repair Needed
- In Progress
- Completed - Ready for Inspection
- Completed - Inspected
- No Repair Needed
- Other - See Comments
- Ladder Ranch Boundary (Estimate)
- Z-Cattle Boundary (Estimate)

Suppression Repair South

Black
NMCNF00185
3/1/022
35,136 acres at 06/26/22 1300 hrs IR
Aires from IR, North American 1983 Datum, Lat-Long Grid

<ul style="list-style-type: none"> Z-Cattle Boundary (Estimate) Ladder Ranch Boundary (Estimate) Lookout Value at Risk Gate Stream Crossing Stream Resource Location Repair Point Dip Site Division Break Drop Point Camp 	<ul style="list-style-type: none"> Fence - Cut/Damaged Culvert Clean Up Area Safety Zone Hazard Water Source Completed Hand Line Completed Mixed Construction Line Completed Road as Line Access or Improved Road Fence Repair Line Road Repair 	<ul style="list-style-type: none"> Restricted Water Source Wildfire Daily Fire Perimeter Other Property Pump Water Tank Completed Dozer Line Completed Uncounted Summit Gap GNIS Populated Places Some Ranger District Office Campground 	<ul style="list-style-type: none"> Group Campground Sink/Rise Spring/Seep Well Dam / Weir Nonarthen Shore Inundation Area Stream / River Wash Stream/River, Artificial Path Canal / Ditch Pipeline Pipeline Underground Stream/River Intermittent Stream / River Administrative FS Boundary Ranger District Boundary Federal Wilderness Boundary State Public Lands Other State Lands Bureau of Land Management Lands Private, Local Government, Undesignated County Subdivision Boundary County Boundary Federal Wilderness Boundary Forest Service Land 	<ul style="list-style-type: none"> Tollway Scenic Byway State Public Lands Other State Lands Bureau of Land Management Lands Private, Local Government, Undesignated County Subdivision Boundary County Boundary Federal Wilderness Boundary Forest Service Land
--	--	--	---	--





Suppression Repair North

Black NMNF000185
 3/1/2022
 395,136 acres at 06/26/22 1300 hrs IR

<ul style="list-style-type: none"> Ladder Ranch Boundary (Estimate) Dip Site Helipoint Sling Site Division Break Drop Point Hot Spot - Spot Fire Value at Risk Gate Water Development or Draft Site Repair Point Hazard Tree Fence - Cut/Damaged Culvert Safety Zone Hazard Water Source Wildfire Daily Fire Perimeter Other Property Pump Water Tank Completed Burnout Completed Dozer Line Contained Completed Hand Line Completed Mixed Construction Line Completed Road as Line Access or Improved Road Repair Line Summit; Gap GNIS Populated Places Some Campground Trailhead Picnic Site Spring/Seep Waterfall Well Nonearthen Shore Wash Stream/River; Artificial Path Canal / Ditch Pipeline Stream/River Intermittent Private; Local Government; Undesignated Federal Wilderness Boundary State Boundary County Boundary County Subdivision Boundary Administrative FS Boundary Federal Wilderness Boundary Ranger District Boundary Scenic Byway Other State Lands Bureau of Land Management Lands Private; Local Government; Undesignated Forest Service Land Tollway 	<p>Miles 0 1 2</p> <p>Kilometers 0 1 2</p>
--	--

