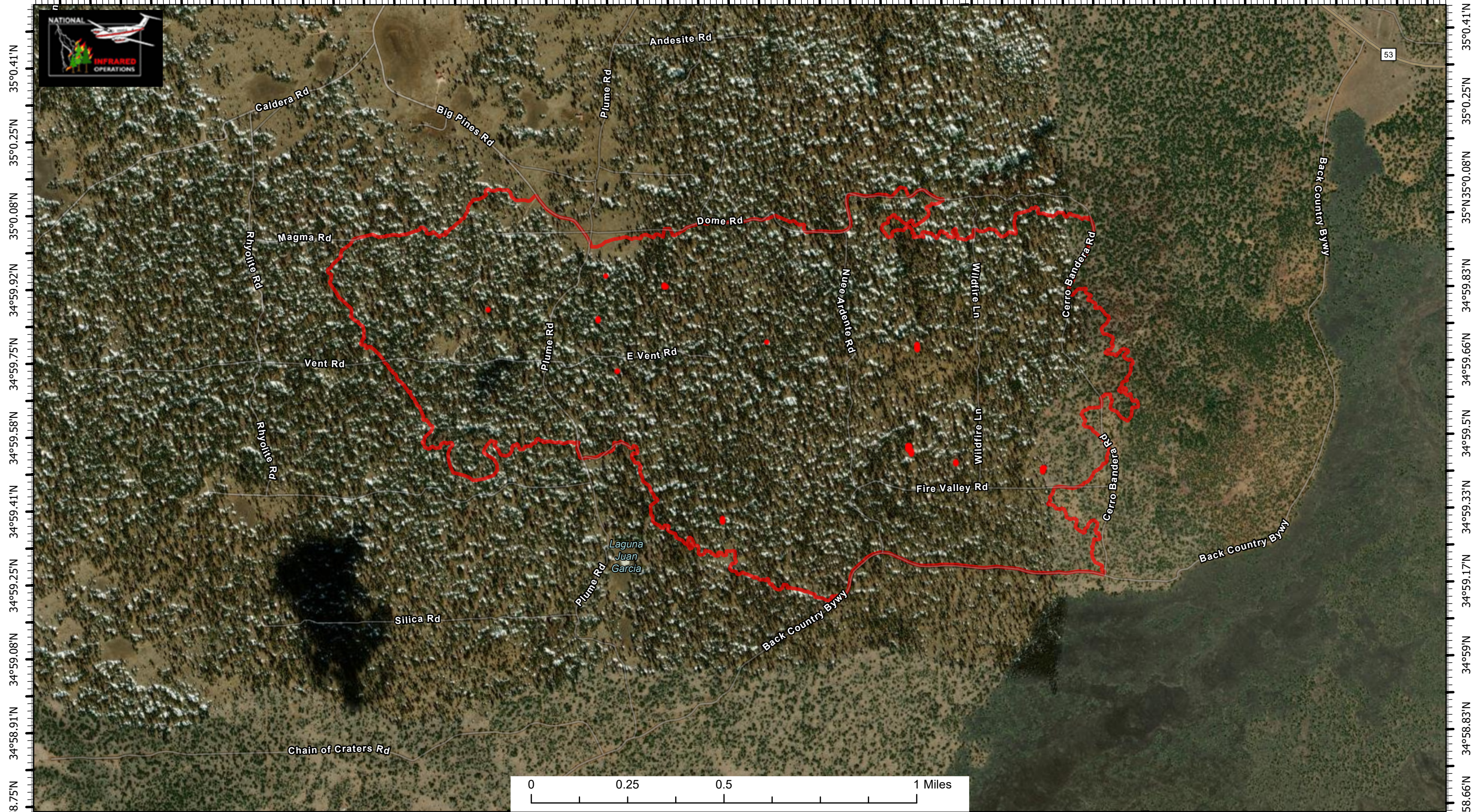


108°9'W 108°8.84'W 108°8.67'W 108°8.5'W 108°8.33'W 108°8.17'W 108°8'W 108°7.84'W 108°7.67'W 108°7.5'W 108°7.34'W 108°7.17'W 108°7'W 108°6.83'W 108°6.67'W 108°6.5'W 108°6.34'W 108°6.17'W 108°6.01'W 108°5.84'W 108°5.67'W 108°5.5'W 108°5.33'W



34°58.75'N 34°58.91'N 34°59.08'N 34°59.25'N 34°59.41'N 34°59.58'N 34°59.75'N 34°59.92'N 35°0.08'N 35°0.25'N 35°0.41'N

Infrared Heat Interpretation
Flown at: 06/13/2022 2136 MDT
939 Interpreted Acres
Print Date: 06/14/2022

Cerro Bandera Fire

NM-N6S-000234

NAD 1983 UTM Zone 12N

- IR Isolated Heat Source
- IR Heat Perimeter
- IR Intense Heat
- IR Scattered Heat

