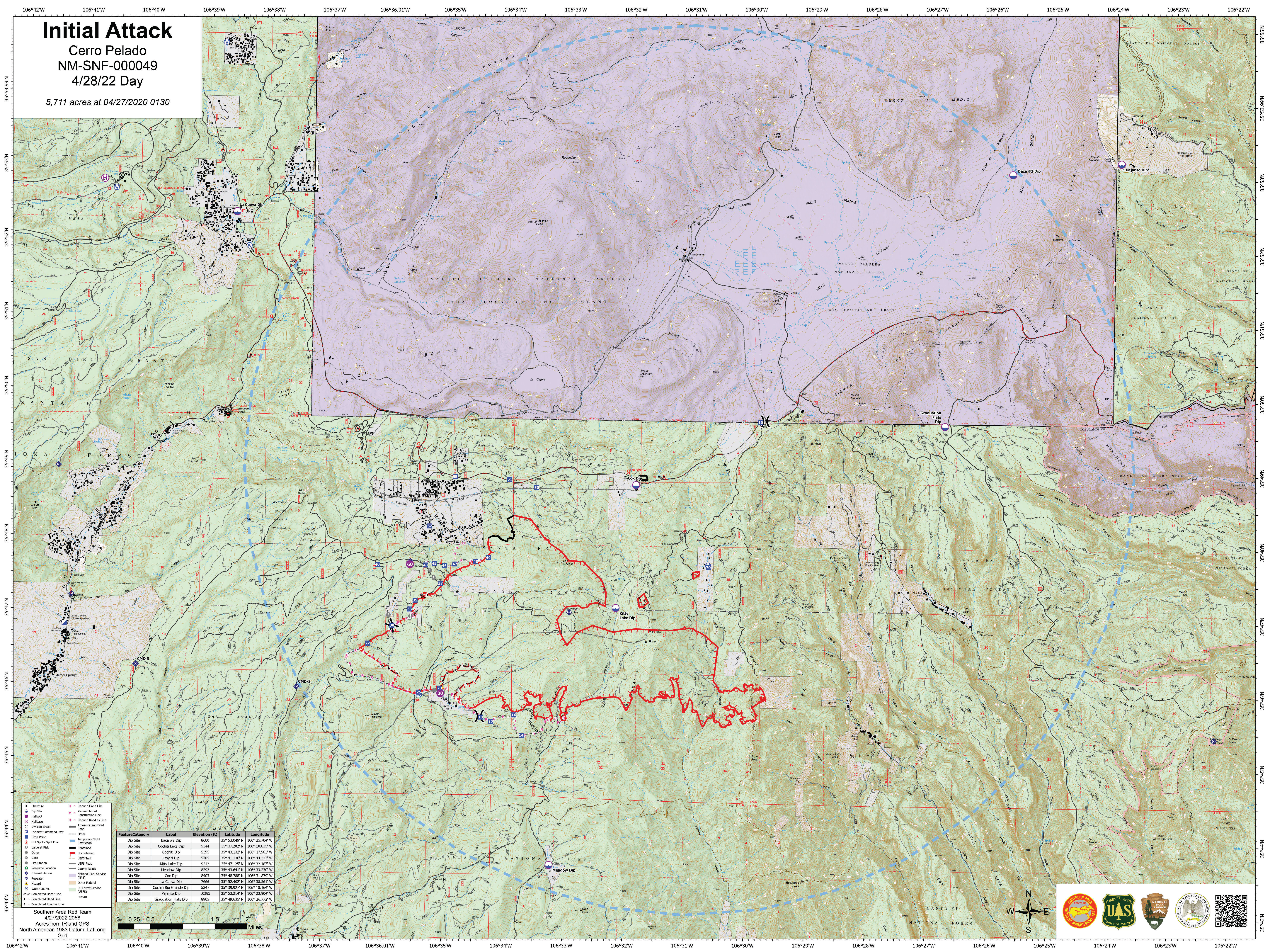


Initial Attack

Cerro Pelado
NM-SNF-000049

4/28/22 Day

5,711 acres at 04/27/2020 0130



- Structure
- Dip Site
- Hot Spot - Spot Fire
- Value at Risk
- Other
- Gate
- Fire Station
- USFS Road
- Resource Location
- Internal Access
- Repeater
- Hazard
- Water Source
- Completed Dashed Line
- Completed Hand Line
- Completed Road as Line
- Planned Hand Line
- Planned Road
- Planned Road as Line
- Planned Road as Line
- Access or Improved Road
- Other
- Temporary Flight Restriction
- Contained
- Uncontained
- USFS Trail
- USFS Road
- County Road
- Internal Access
- Repeater
- Hazard
- Water Source
- Completed Dashed Line
- Completed Hand Line
- Completed Road as Line

FeatureCategory	Label	Elevation (ft)	Latitude	Longitude
Dip Site	Boca #2 Dip	8600	35° 53.049' N	106° 25.704' W
Dip Site	Cochiti Lake Dip	5344	35° 37.202' N	106° 18.835' W
Dip Site	Cochiti Dip	5395	35° 43.132' N	106° 17.541' W
Dip Site	Heavy 4 Dip	5705	35° 41.136' N	106° 44.337' W
Dip Site	Kitty Lake Dip	9212	35° 47.125' N	106° 32.187' W
Dip Site	Meadow Dip	8292	35° 43.641' N	106° 33.230' W
Dip Site	Cox Dip	8403	35° 48.788' N	106° 31.879' W
Dip Site	La Cueva Dip	7666	35° 52.402' N	106° 38.501' W
Dip Site	Cochiti Rio Grande Dip	5347	35° 39.927' N	106° 18.164' W
Dip Site	Pajarito Dip	10285	35° 53.214' N	106° 23.904' W
Dip Site	Graduation Flats Dip	8905	35° 49.635' N	106° 26.772' W

Southern Area Red Team
4/27/2022 2058
Acres from IR and GPS
North American 1983 Datum, Lat/Long Grid

