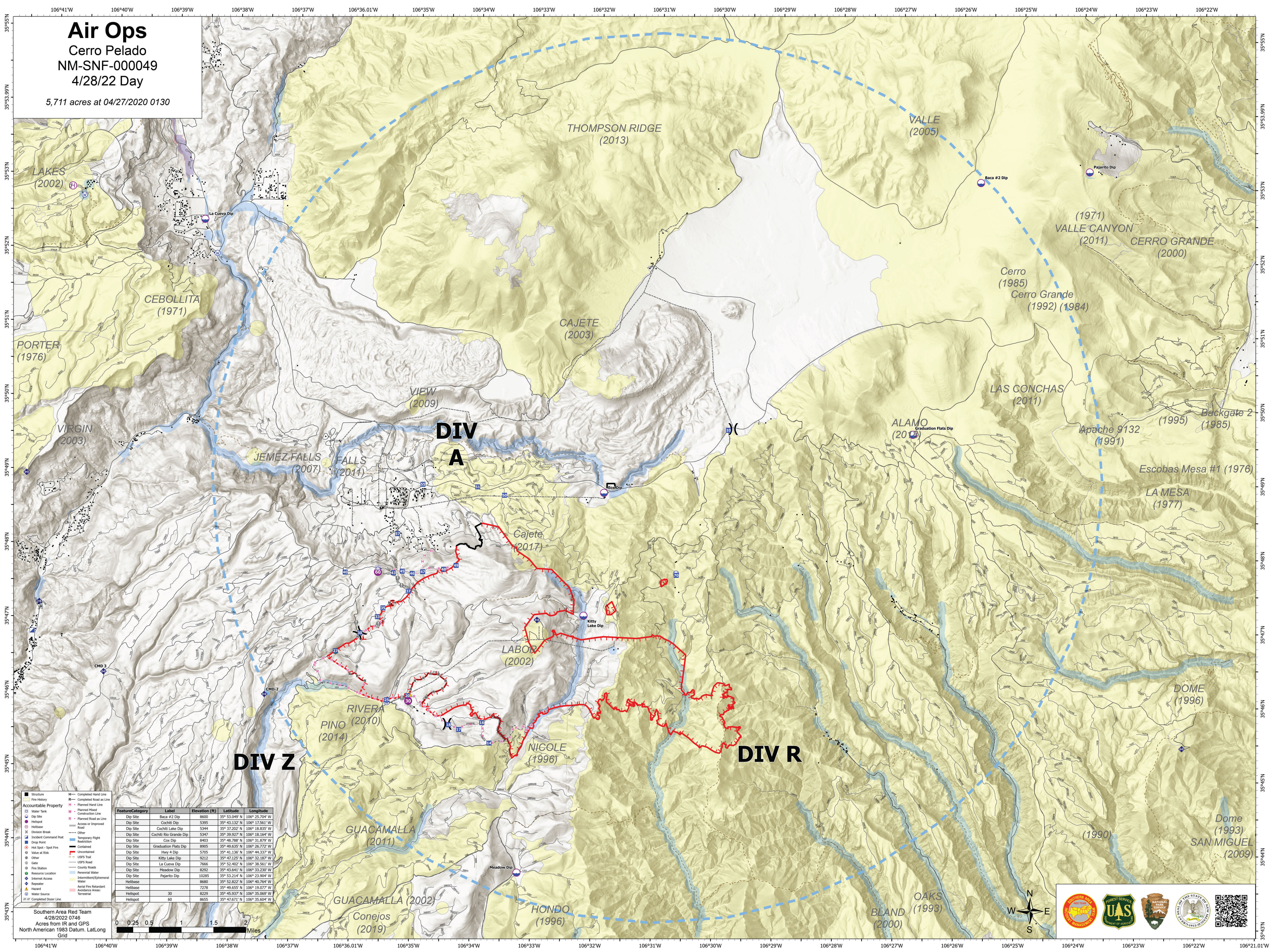


Air Ops

Cerro Pelado
NM-SNF-000049
4/28/22 Day

5,711 acres at 04/27/2020 0130



DIV A

DIV R

DIV Z

- Structure
- Fire History
- Accountable Property
- Water Tank
- Dip Site
- Helibase
- Division Break
- Incident Command Post
- Drop Point
- Hot Spot - Spot Fire
- Value at Risk
- Other
- Gale
- Fire Station
- Resource Location
- Internet Access
- Repeater
- Hazard
- Water Source
- Completed Hand Line
- Completed Road as Line
- Planned Hand Line
- Construction Line
- Planned Road as Line
- Access or Improved Road
- Other
- Temporary Flight Restriction
- Contained
- Uncontained
- USFS Trail
- USFS Road
- County Road
- Perennial Water
- Intermittent/Ephemeral Water
- Aerial Fire Retardant
- Aviation Areas: Terrestrial

Feature/Category	Label	Elevation (ft)	Latitude	Longitude
Dip Site	Baca #2 Dip	8600	35° 53.099' N	106° 25.704' W
Dip Site	Cochiti Dip	5395	35° 43.132' N	106° 17.561' W
Dip Site	Cochiti Lake Dip	5344	35° 37.202' N	106° 18.835' W
Dip Site	Cochiti Rio Grande Dip	5347	35° 39.927' N	106° 18.164' W
Dip Site	Cox Dip	8403	35° 48.788' N	106° 31.879' W
Dip Site	Graduation Flats Dip	8905	35° 49.635' N	106° 26.772' W
Dip Site	Hwy A Dip	5705	35° 41.136' N	106° 44.317' W
Dip Site	Kitty Lake Dip	9212	35° 47.125' N	106° 32.187' W
Dip Site	La Cueva Dip	7666	35° 52.402' N	106° 38.561' W
Dip Site	Meadow Dip	8292	35° 43.641' N	106° 33.230' W
Dip Site	Pajarito Dip	10285	35° 53.214' N	106° 23.904' W
Helibase		8680	35° 52.822' N	106° 40.794' W
Helibase		7278	35° 46.855' N	106° 19.077' W
Helibase		8229	35° 45.937' N	106° 35.069' W
Helibase		8655	35° 47.671' N	106° 35.604' W

Southern Area Red Team
4/28/2022 0746
Acres from IR and GPS
North American 1983 Datum, Lat/Long Grid

