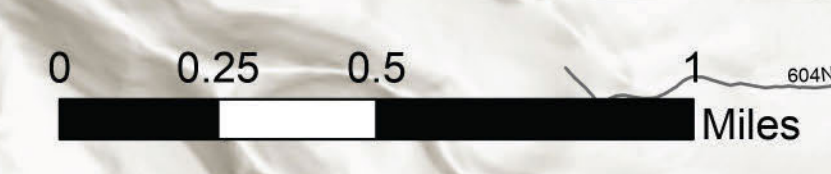


Transportation

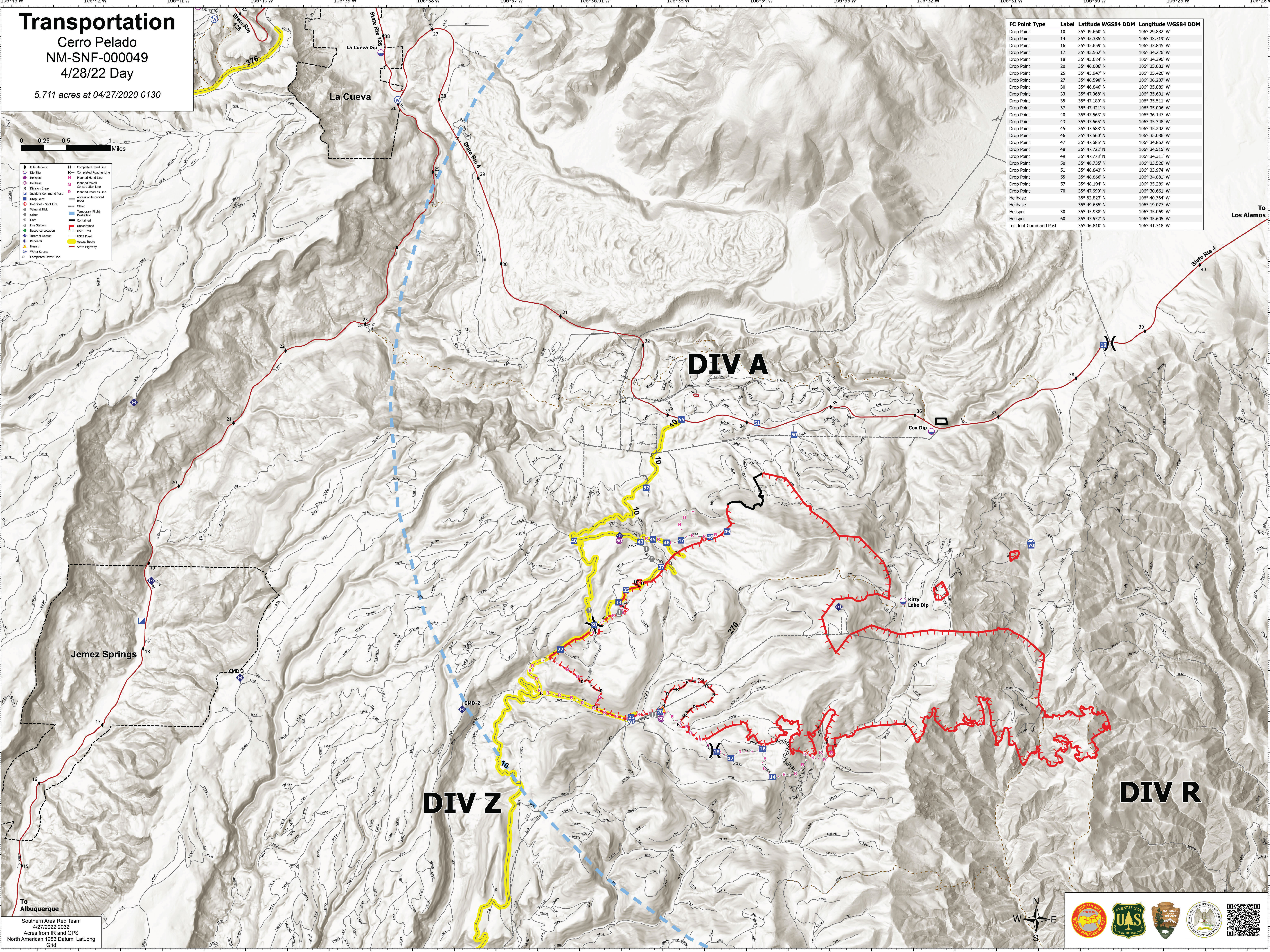
Cerro Pelado
 NM-SNF-000049
 4/28/22 Day

5,711 acres at 04/27/2020 0130



- Mile Markers
- Dip Site
- Helispot
- Helibase
- Division Break
- Incident Command Post
- Drop Point
- Hot Spot - Spot Fire
- Value at Risk
- Other
- Safe
- Fire Station
- Resource Location
- Internet Access
- Repeater
- Hazard
- Water Source
- Completed Doser Line
- Completed Hand Line
- Planned Hand Line
- Planned Hand Construction Line
- Planned Road as Line
- Access or Improved Road
- Other
- Temporary Flight Restriction
- Uncountained
- USFS Trail
- USFS Road
- Access Route
- State Highway

FC Point Type	Label	Latitude WGS84 DDM	Longitude WGS84 DDM
Drop Point	10	35° 49.660' N	106° 29.832' W
Drop Point	14	35° 45.385' N	106° 33.719' W
Drop Point	16	35° 45.659' N	106° 33.845' W
Drop Point	17	35° 45.562' N	106° 34.226' W
Drop Point	18	35° 45.624' N	106° 34.396' W
Drop Point	20	35° 46.006' N	106° 35.083' W
Drop Point	25	35° 45.947' N	106° 35.426' W
Drop Point	27	35° 46.598' N	106° 36.287' W
Drop Point	30	35° 46.846' N	106° 35.889' W
Drop Point	33	35° 47.068' N	106° 35.601' W
Drop Point	35	35° 47.189' N	106° 35.511' W
Drop Point	37	35° 47.421' N	106° 35.096' W
Drop Point	40	35° 47.663' N	106° 36.147' W
Drop Point	43	35° 47.665' N	106° 35.348' W
Drop Point	45	35° 47.688' N	106° 35.202' W
Drop Point	46	35° 47.660' N	106° 35.036' W
Drop Point	47	35° 47.685' N	106° 34.862' W
Drop Point	48	35° 47.722' N	106° 34.515' W
Drop Point	49	35° 47.778' N	106° 34.311' W
Drop Point	50	35° 48.735' N	106° 33.526' W
Drop Point	51	35° 48.843' N	106° 33.974' W
Drop Point	55	35° 48.866' N	106° 34.881' W
Drop Point	57	35° 48.194' N	106° 35.289' W
Drop Point	70	35° 47.690' N	106° 30.661' W
Helibase		35° 52.823' N	106° 40.764' W
Helibase		35° 49.655' N	106° 19.077' W
Helispot	30	35° 45.938' N	106° 35.069' W
Helispot	60	35° 47.672' N	106° 35.605' W
Incident Command Post		35° 46.810' N	106° 41.318' W



Southern Area Red Team
 4/27/2022 2032
 Acres from IR and GPS
 North American 1983 Datum, Lat/Long
 Grid

