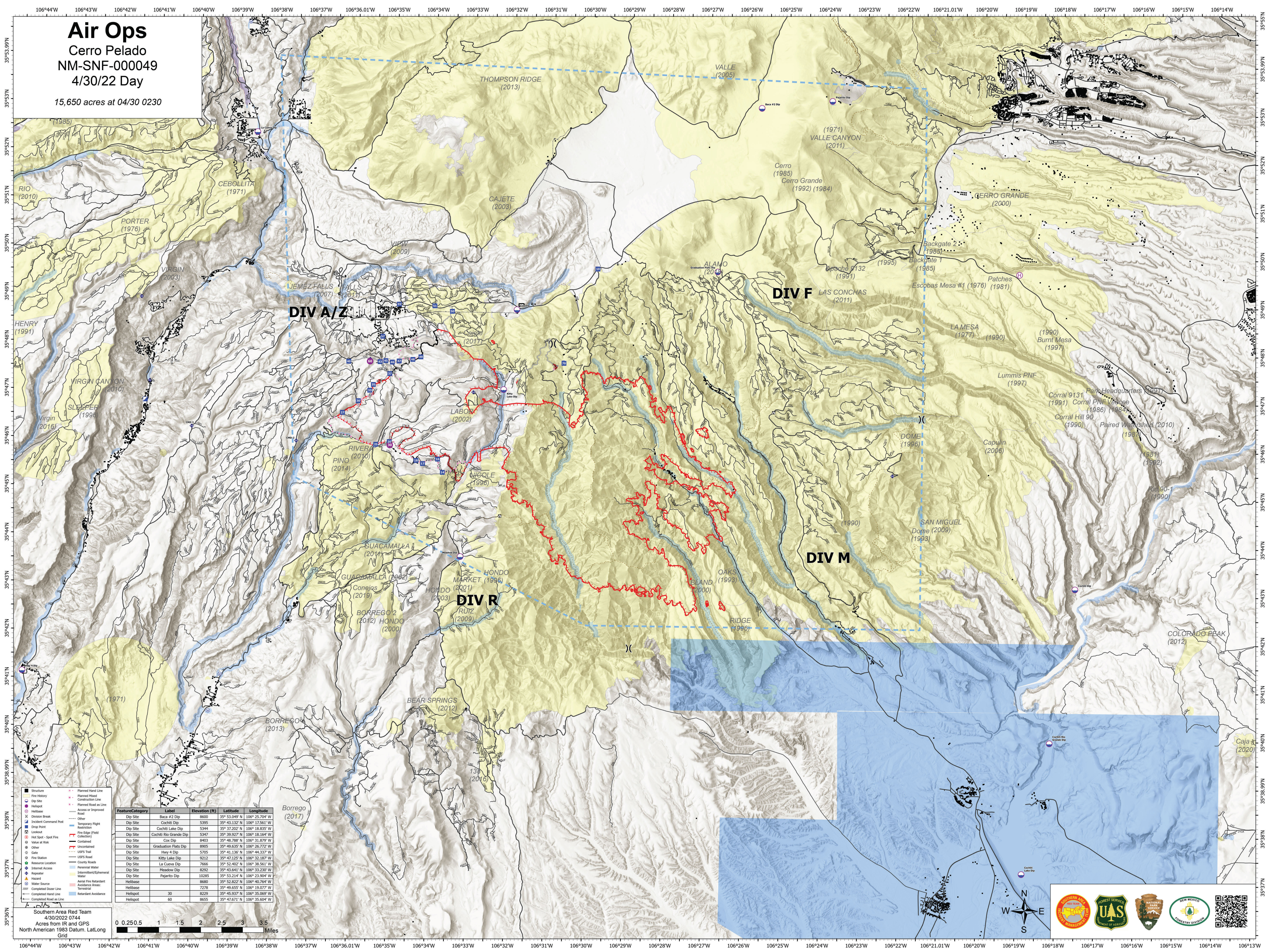


Air Ops

Cerro Pelado
 NM-SNF-000049
 4/30/22 Day

15,650 acres at 04/30 0230



Feature/Category	Label	Elevation (ft)	Latitude	Longitude
Dip Site	Baca #2 Dip	8600	35° 53.097' N	106° 25.704' W
Dip Site	Cochiti Dip	5395	35° 43.132' N	106° 17.561' W
Dip Site	Cochiti Lake Dip	5344	35° 37.202' N	106° 18.835' W
Dip Site	Cochiti Rio Grande Dip	5347	35° 39.927' N	106° 18.164' W
Dip Site	Cox Dip	8403	35° 48.788' N	106° 31.879' W
Dip Site	Graduation Flats Dip	8905	35° 49.835' N	106° 26.772' W
Dip Site	Hwy A Dip	5705	35° 41.136' N	106° 44.337' W
Dip Site	Kitty Lake Dip	9212	35° 47.125' N	106° 32.187' W
Dip Site	La Cueva Dip	7666	35° 52.402' N	106° 38.561' W
Dip Site	Meadow Dip	8292	35° 43.641' N	106° 33.230' W
Dip Site	Pajarito Dip	10285	35° 53.214' N	106° 23.904' W
Heli-base		8680	35° 52.822' N	106° 40.764' W
Heli-base		7278	35° 49.855' N	106° 19.077' W
Heli-spot		8229	35° 45.937' N	106° 35.069' W
Heli-spot		8655	35° 47.671' N	106° 35.604' W

Southern Area Red Team
 4/30/2022 0744
 Acres from IR and GPS
 North American 1983 Datum, Lat/Long
 Grid

