

# Div R

Cerro Pelado  
NM-SNF-000049

5/02/22 Day

22,314 acres at 05/02 0030



- Historical Fire
- Hot Spot
- Division Break
- Drop Point
- Lookout
- Hot Spot - Spot Fire
- Value at Risk
- Other
- Resource Location
- Reservoir
- Water Source
- Completed Burnout
- Completed Dozer Line
- Completed Fuel Break
- Completed Hand Line
- Completed Road as Line
- Planned Burnout
- Planned Hand
- Construction Line
- Planned Road as Line
- Access or Improved Road
- Management Action Point
- Other
- Temporary Flight Restriction
- Contained
- Uncontained
- Annual Fire Retardant
- Terrestrial
- Perennial Water
- Intermittent/Ephemeral Water
- Old Fireline
- Unknown Line Type
- Old Dozer Line
- Old Hand Line
- Old Completed Line
- Retardant Avoidance
- Primary
- Alternate

0 0.25 0.5 Miles

35°46'N

35°44'N

35°42'N

35°40'N

35°38'N

35°36'N

35°34'N

35°32'N

35°30'N

35°28'N

35°26'N

35°24'N

35°22'N

35°20'N

35°18'N

35°16'N

35°14'N

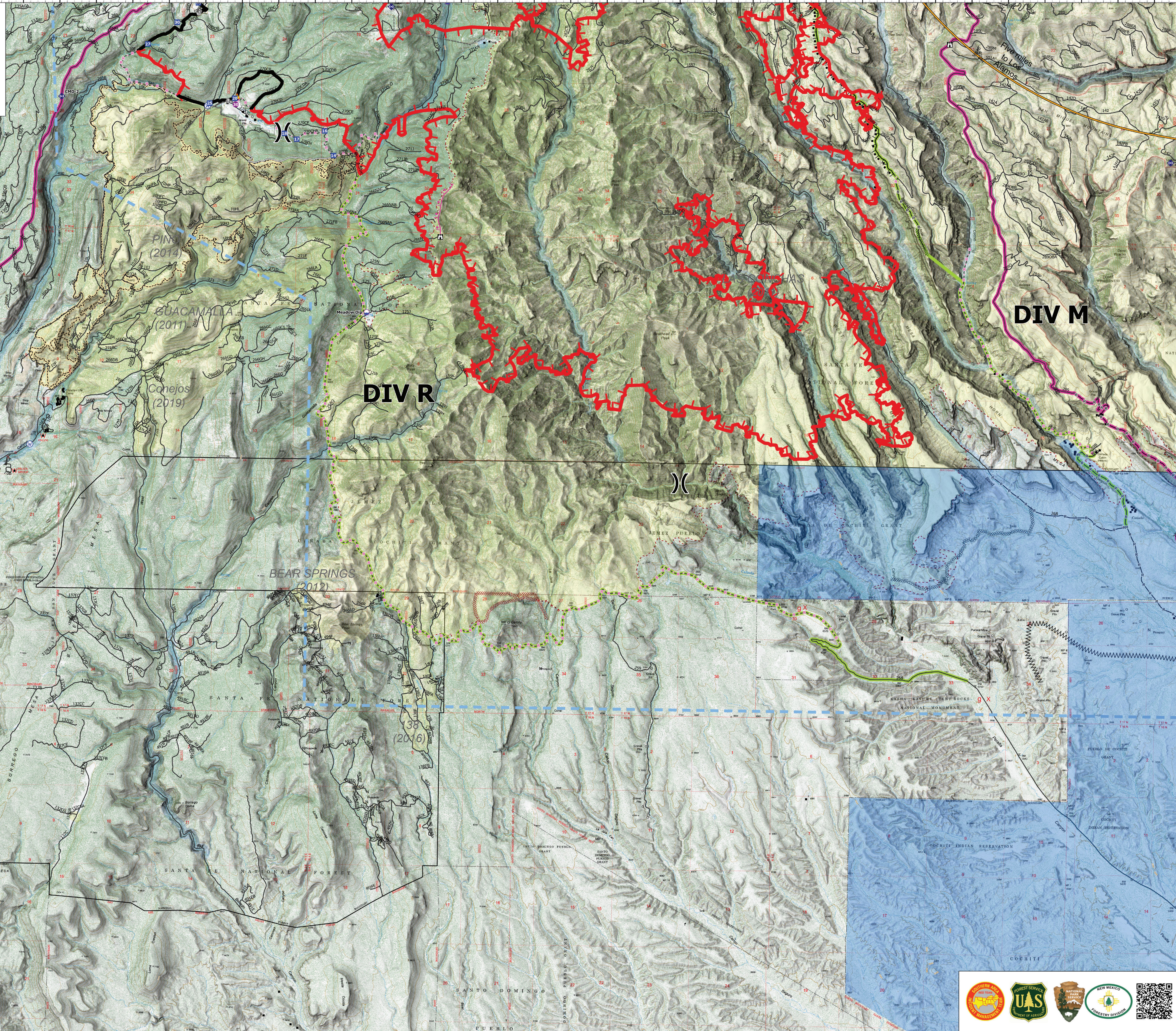
35°12'N

35°10'N

35°08'N

35°06'N

35°04'N



## DIV M

## DIV R

## BEAR SPRINGS (2012)

## PIMA (2014)

## GUACAMALIA (2011)

## CONEJOS (2019)

## 38 (2016)

Southern Area Red Team  
5/2/2022 1234  
Acres from IR and GPS  
North American 1983 Datum, Lat/Long  
Grid

