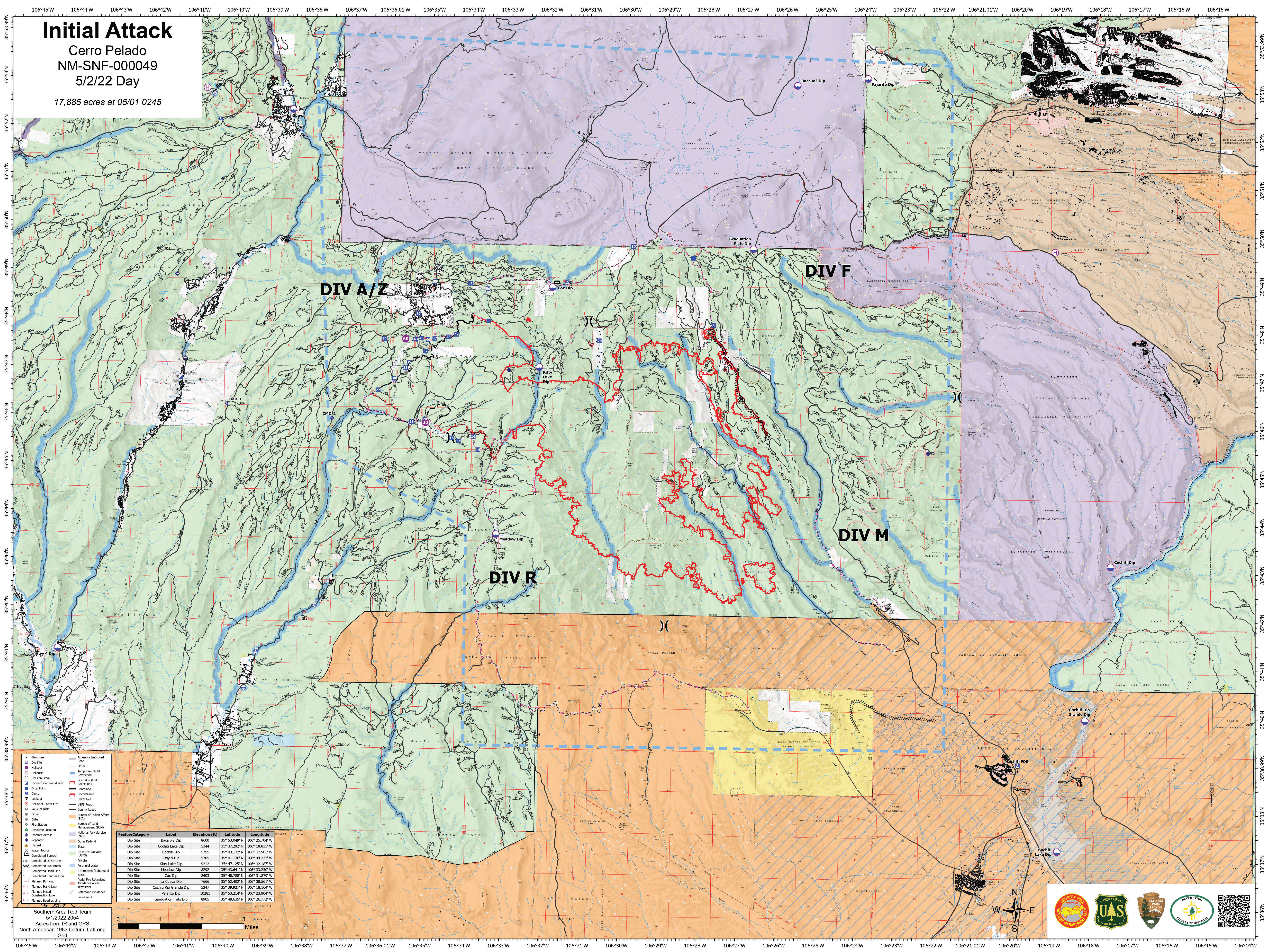


Initial Attack

Cerro Pelado
NM-SNF-000049
5/1/22 Day

17,885 acres at 05/01 0245



Structure	Access or Improved Road
Dip Site	Other
Helispot	Temporary Flight Restriction
Helibase	Fire Edge (Field Collection)
X Division Break	Uncontained
Incident Command Post	USFS Trail
Drop Point	USFS Road
Camp	County Road
Lockout	Bureau of Indian Affairs (BIA)
Hot Spot - Spot Fire	Bureau of Land Management (BLM)
Value at Risk	National Park Service (NPS)
Other	Other Federal
Gate	State
Fire Station	US Forest Service (USFS)
Resource Location	Photo
Internet Access	Intermittent/Ephemeral Water
Reservoir	Aerial Fire Retardant
Hazard	Avoidance Areas:
Water Source	Planned Burnout
Completed Burnout	Planned Hand Line
Completed Door Line	Planned Mined Containment Line
Completed Fuel Break	Planned Road as Line
Completed Hand Line	
Planned Road as Line	

Feature/Category	Label	Elevation (ft)	Latitude	Longitude
Dip Site	Baca #2 Dip	8600	35° 53.049' N	106° 25.704' W
Dip Site	Cochiti Lake Dip	5304	35° 37.202' N	106° 18.835' W
Dip Site	Cochiti Dip	5395	35° 43.132' N	106° 17.561' W
Dip Site	Hevy 4 Dip	5705	35° 41.136' N	106° 44.337' W
Dip Site	Kitty Lake Dip	9212	35° 47.125' N	106° 32.187' W
Dip Site	Meadow Dip	8292	35° 43.641' N	106° 33.230' W
Dip Site	Cox Dip	8403	35° 48.788' N	106° 31.879' W
Dip Site	La Cueva Dip	7866	35° 52.402' N	106° 38.561' W
Dip Site	Cochiti Rio Grande Dip	5347	35° 39.927' N	106° 18.164' W
Dip Site	Pajarito Dip	10285	35° 53.214' N	106° 23.994' W
Dip Site	Graduation Flats Dip	8905	35° 49.635' N	106° 26.772' W

Southern Area Red Team
5/1/2022 2054
Acres from IR and GPS
North American 1983 Datum, Lat/Long Grid

