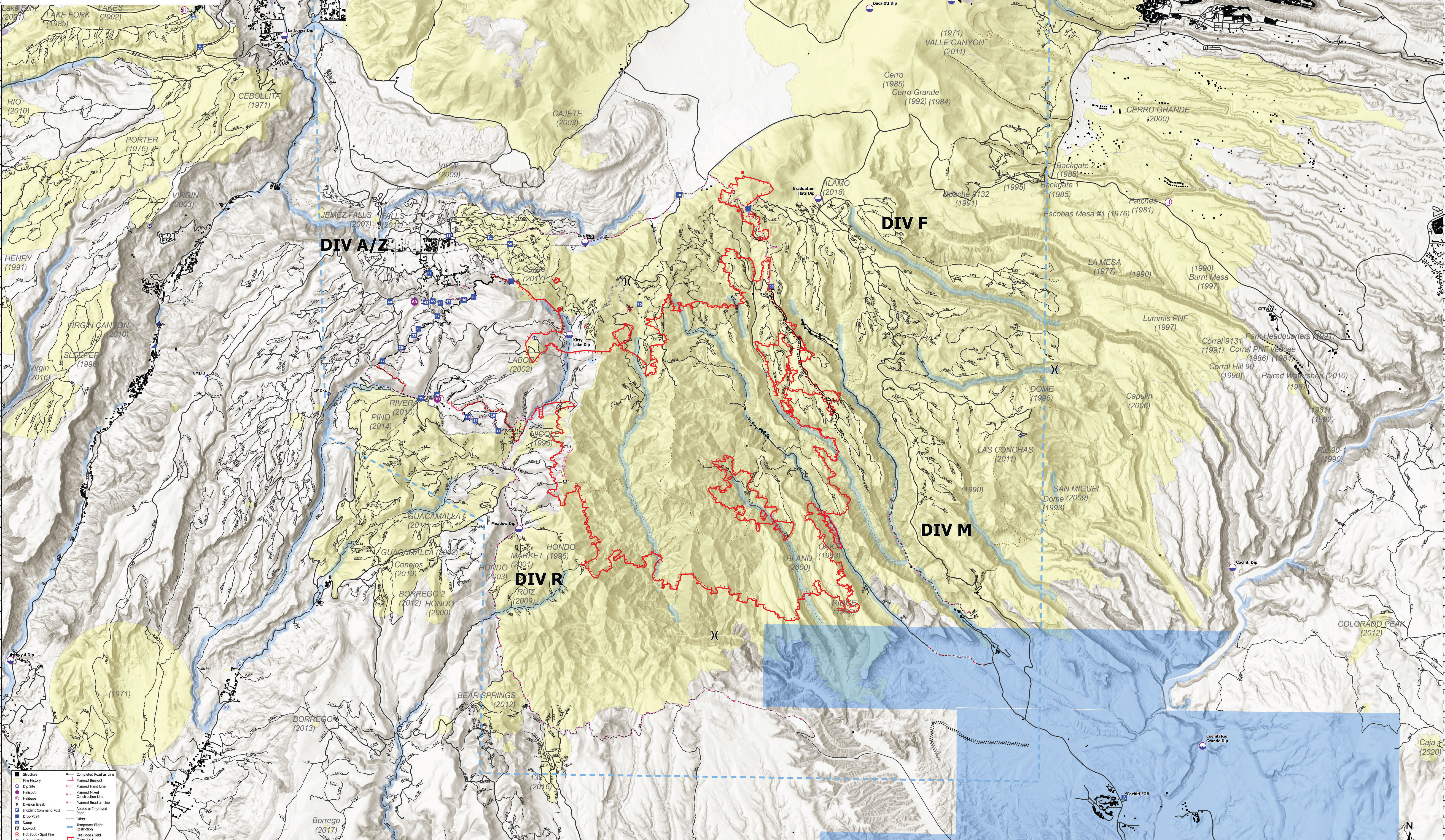
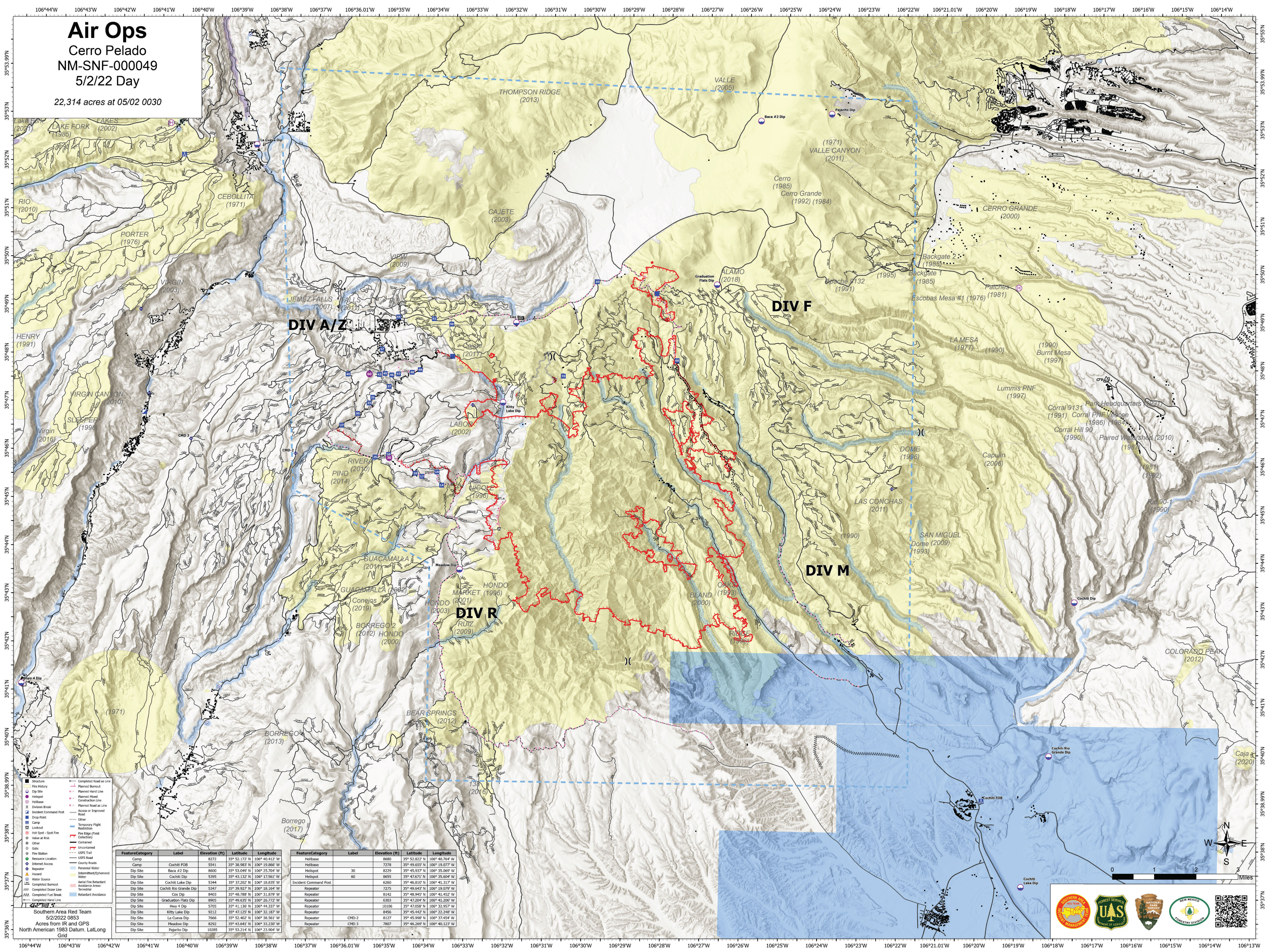


Air Ops

Cerro Pelado
NM-SNF-000049

5/2/22 Day

22,314 acres at 05/02 0030



- Structure
- Fire History
- Dip Site
- Helispot
- Helibase
- Division Break
- Incident Command Post
- Drop Point
- Camp
- Lookout
- Hot Spot - Spot Fire
- Valley at Risk
- Other
- Gate
- Fire Station
- Resource Location
- Internet Access
- County Roads
- Water Source
- Completed Burnout
- Completed Outer Line
- Completed Fuel Break
- Completed Hand Line
- Completed Road as Line
- Planned Burnout
- Planned Hand Line
- Planned Road
- Construction Line
- Planned Road as Line
- Access or Improved Road
- Other
- Temporary Flight Restriction
- Fire Edge (Field Collection)
- Contained
- Uncontained
- USFS Trail
- USFS Road
- Perennial Water
- Intermittent/Seasonal Water
- Aerial Fire Retardant
- Terrestrial
- Resistant Avoidance

Southern Area Red Team
5/2/2022 0853
Acres from IR and GPS
North American 1983 Datum, Lat/Long
Grid

Feature/Category	Label	Elevation (ft)	Latitude	Longitude
Camp	Cochiti FOB	5541	35° 52.172' N	106° 40.412' W
Dip Site	Baca #2 Dip	8600	35° 53.049' N	106° 25.704' W
Dip Site	Cochiti Dip	5395	35° 43.132' N	106° 17.581' W
Dip Site	Cochiti Lake Dip	5344	35° 37.202' N	106° 18.835' W
Dip Site	Cochiti Rio Grande Dip	5347	35° 39.927' N	106° 19.029' W
Dip Site	Cox Dip	8403	35° 48.788' N	106° 31.879' W
Dip Site	Graduation Flats Dip	8905	35° 49.635' N	106° 25.772' W
Dip Site	Hwy 4 Dip	5705	35° 41.136' N	106° 44.337' W
Dip Site	Kitty Lake Dip	9212	35° 47.125' N	106° 32.187' W
Dip Site	La Cueva Dip	7666	35° 52.402' N	106° 38.561' W
Dip Site	Meadow Dip	8292	35° 43.841' N	106° 33.230' W
Dip Site	Pajarito Dip	10285	35° 53.214' N	106° 23.904' W

Feature/Category	Label	Elevation (ft)	Latitude	Longitude	
Helibase		8680	35° 52.822' N	106° 40.264' W	
Helibase		7278	35° 49.655' N	106° 19.077' W	
Helispot		8239	35° 45.937' N	106° 35.069' W	
Helispot		60	8655	35° 47.671' N	106° 35.604' W
Incident Command Post		6260	35° 46.810' N	106° 41.317' W	
Repeater		7275	35° 49.947' N	106° 19.029' W	
Repeater		8142	35° 48.945' N	106° 41.852' W	
Repeater		6303	35° 47.204' N	106° 41.206' W	
Repeater		10106	35° 47.058' N	106° 32.957' W	
Repeater		8456	35° 45.442' N	106° 22.248' W	
Repeater		8127	35° 45.998' N	106° 37.454' W	
Repeater	CHD-2	7807	35° 46.269' N	106° 40.123' W	

