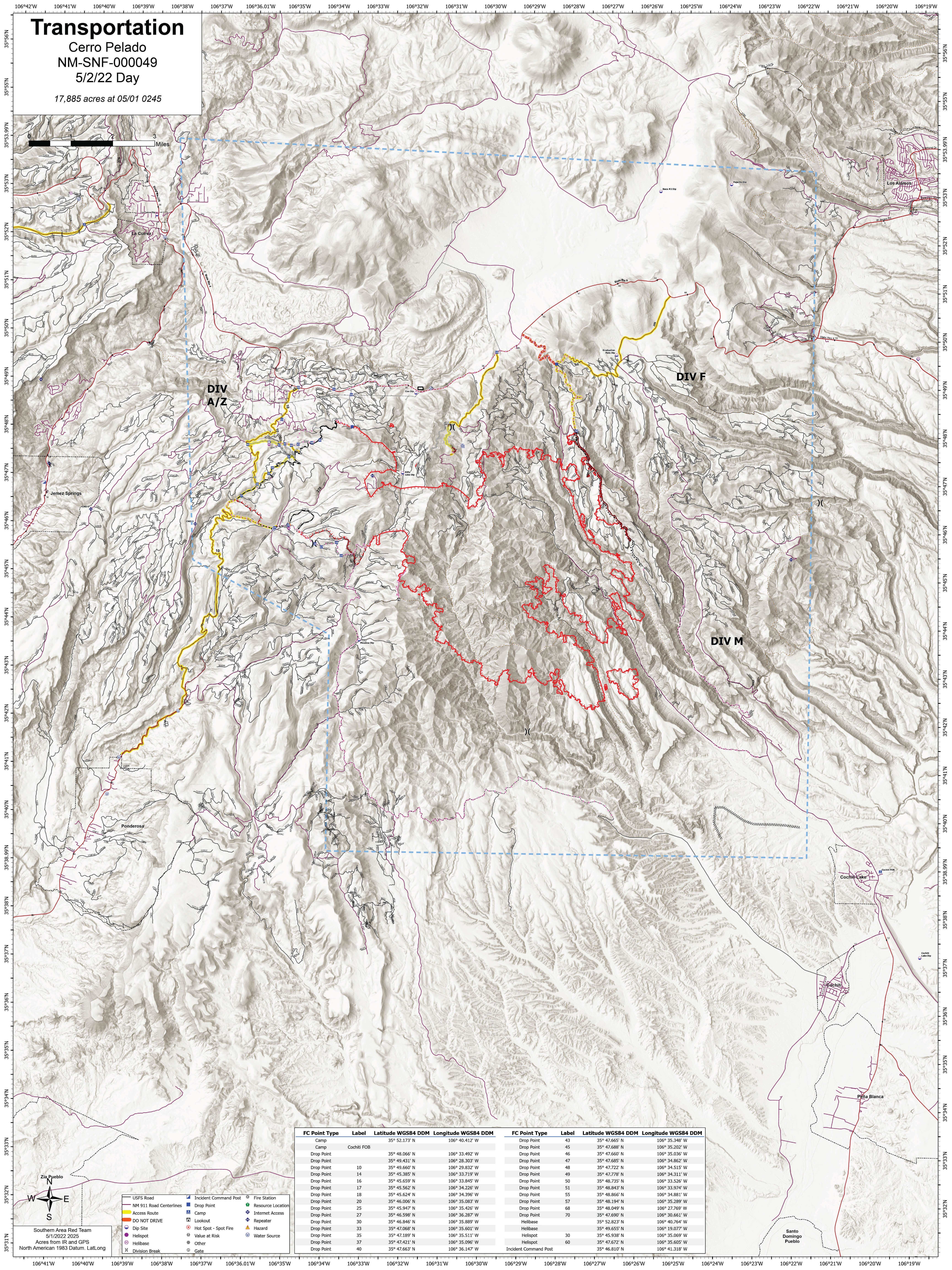
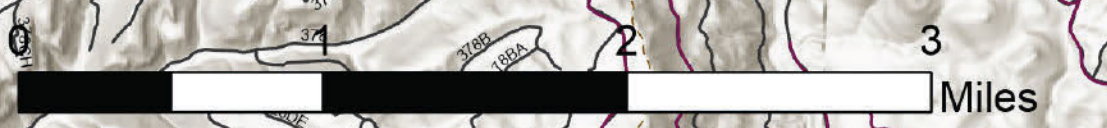


Transportation

Cerro Pelado
 NM-SNF-000049
 5/2/22 Day

17,885 acres at 05/01 0245



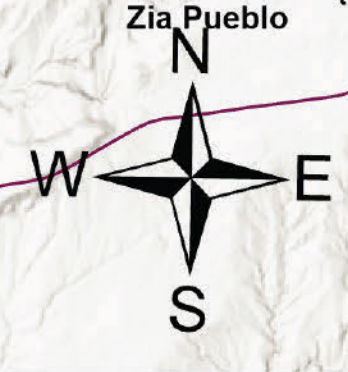
**DIV
 A/Z**

DIV F

DIV M

FC Point Type	Label	Latitude WGS84 DDM	Longitude WGS84 DDM	FC Point Type	Label	Latitude WGS84 DDM	Longitude WGS84 DDM
Camp		35° 52.173' N	106° 40.412' W	Drop Point	43	35° 47.665' N	106° 35.348' W
Camp	Cochiti FOB			Drop Point	45	35° 47.688' N	106° 35.202' W
Drop Point		35° 48.066' N	106° 33.492' W	Drop Point	46	35° 47.660' N	106° 35.036' W
Drop Point		35° 49.431' N	106° 28.303' W	Drop Point	47	35° 47.685' N	106° 34.862' W
Drop Point	10	35° 49.660' N	106° 29.832' W	Drop Point	48	35° 47.722' N	106° 34.515' W
Drop Point	14	35° 45.385' N	106° 33.719' W	Drop Point	49	35° 47.778' N	106° 34.311' W
Drop Point	16	35° 45.659' N	106° 33.845' W	Drop Point	50	35° 48.735' N	106° 33.526' W
Drop Point	17	35° 45.562' N	106° 34.226' W	Drop Point	51	35° 48.843' N	106° 33.974' W
Drop Point	18	35° 45.624' N	106° 34.396' W	Drop Point	55	35° 48.866' N	106° 34.881' W
Drop Point	20	35° 46.006' N	106° 35.083' W	Drop Point	57	35° 48.194' N	106° 35.289' W
Drop Point	25	35° 45.947' N	106° 35.426' W	Drop Point	68	35° 48.049' N	106° 27.769' W
Drop Point	27	35° 46.598' N	106° 36.287' W	Drop Point	70	35° 47.690' N	106° 30.661' W
Drop Point	30	35° 46.846' N	106° 36.287' W	Helibase		35° 52.823' N	106° 40.764' W
Drop Point	33	35° 47.068' N	106° 35.601' W	Helibase		35° 49.655' N	106° 19.077' W
Drop Point	35	35° 47.189' N	106° 35.511' W	Helispot	30	35° 45.938' N	106° 35.069' W
Drop Point	37	35° 47.421' N	106° 35.096' W	Helispot	60	35° 47.672' N	106° 35.605' W
Drop Point	40	35° 47.663' N	106° 36.147' W	Incident Command Post		35° 46.810' N	106° 41.318' W

- USFS Road
- NM 911 Road Centerlines
- Access Route
- DO NOT DRIVE
- Dip Site
- Helibase
- Division Break
- Incident Command Post
- Drop Point
- Camp
- Lookout
- Hot Spot - Spot Fire
- Value at Risk
- Other
- Gate
- Fire Station
- Resource Location
- Internet Access
- Repeater
- Hazard
- Water Source



Southern Area Red Team
 5/1/2022 2025
 Acres from IR and GPS
 North American 1983 Datum. Lat/Long