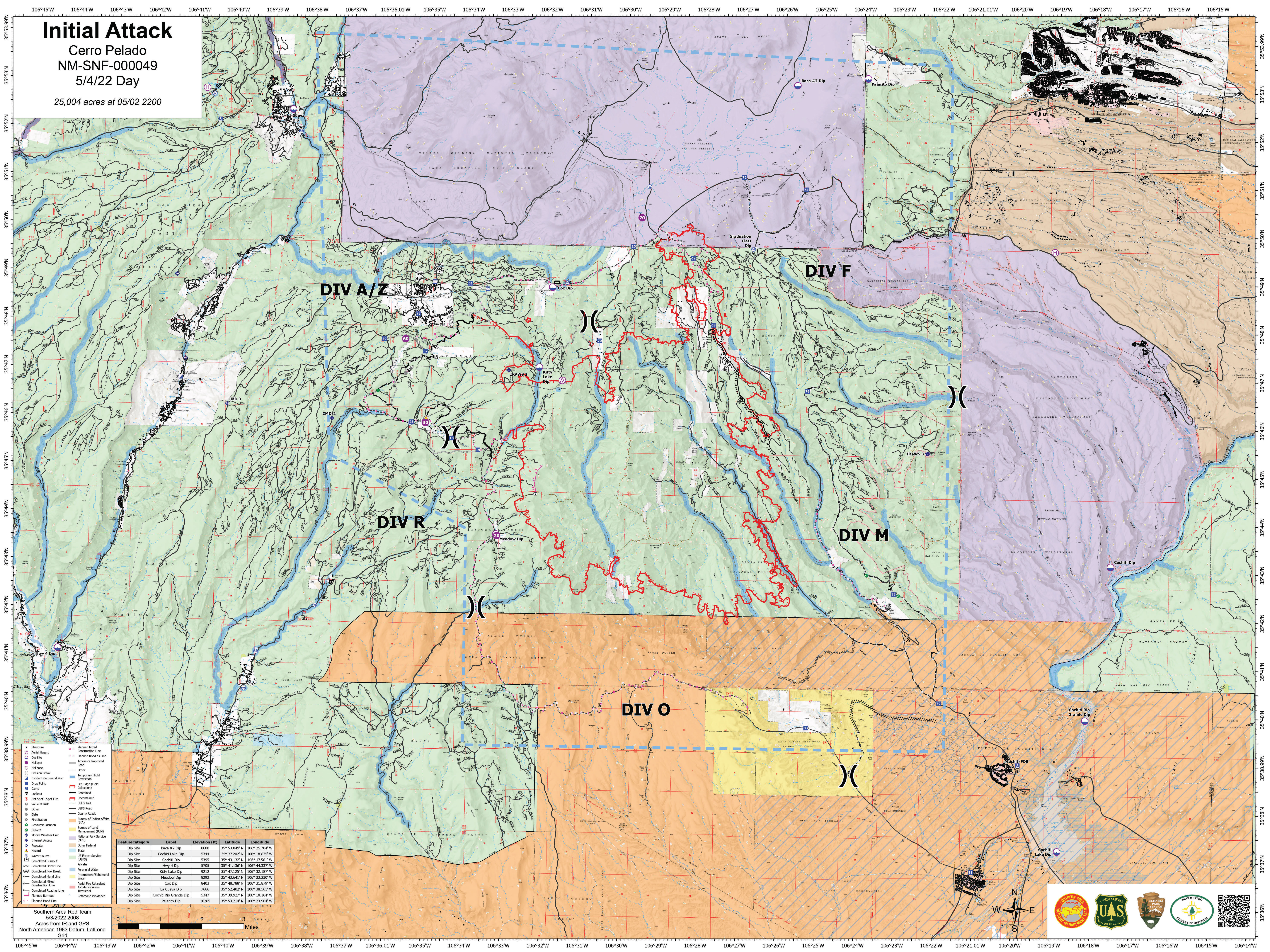


Initial Attack

Cerro Pelado
 NM-SNF-000049
 5/4/22 Day

25,004 acres at 05/02 2200



- Structure
- Aspen Hazard
- Dip Site
- Hot Spot
- Habitat
- Division Break
- Incident Command Post
- Drop Point
- Camp
- Lookout
- Hot Spot - Spot Fire
- Value at Risk
- Other
- Gate
- Fire Station
- Resource Location
- Culvert
- Mobile Weather Unit
- Internet Access
- Reservoir
- Hazard
- Water Source
- Completed Burnout (MPS)
- Completed Drier Line
- Completed Fuel Break
- Completed Hand Line
- Completed Head
- Construction Line
- Completed Road as Line
- Planned Burnout
- Planned Hand Line
- Planned Mined Construction Line
- Planned Road as Line
- Access or Improved Road
- Other
- Temporary Flight Restriction
- Fire Edge (Field Collection)
- Contained
- Uncontained
- Intermittent/Ephemeral Water
- Aerial Fire Retardant
- Terrestrial Retardant Avoidance
- Retardant Avoidance

FeatureCategory	Label	Elevation (ft)	Latitude	Longitude
Dip Site	Baca #2 Dip	8600	35° 53.049' N	106° 25.704' W
Dip Site	Cochiti Lake Dip	5344	35° 37.202' N	106° 18.835' W
Dip Site	Cochiti Dip	5395	35° 43.132' N	106° 17.561' W
Dip Site	Hwy 4 Dip	5705	35° 41.136' N	106° 44.337' W
Dip Site	Kitty Lake Dip	9212	35° 47.125' N	106° 32.187' W
Dip Site	Meadow Dip	8292	35° 43.641' N	106° 33.230' W
Dip Site	Cox Dip	8403	35° 48.788' N	106° 31.879' W
Dip Site	La Cueva Dip	7666	35° 52.402' N	106° 38.561' W
Dip Site	Cochiti Rio Grande Dip	5347	35° 39.927' N	106° 18.164' W
Dip Site	Pajarito Dip	10285	35° 53.214' N	106° 23.904' W

Southern Area Red Team
 5/3/2022 2008
 Acres from IR and GPS
 North American 1983 Datum, Lat/Long Grid

