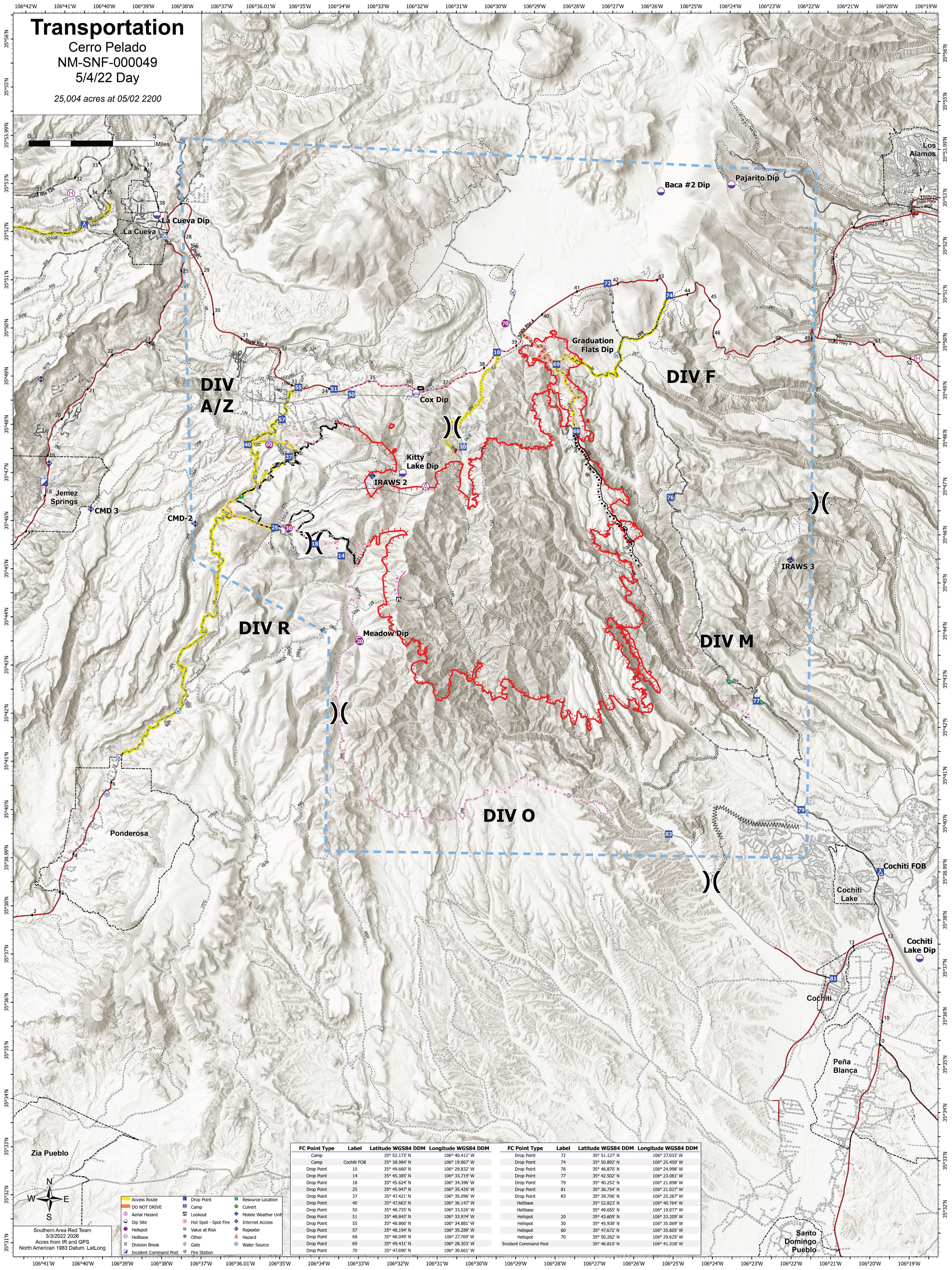


Transportation

Cerro Pelado
 NM-SNF-000049
 5/4/22 Day

25,004 acres at 05/02 2200



FC Point Type	Label	Latitude WGS84 DDM	Longitude WGS84 DDM	FC Point Type	Label	Latitude WGS84 DDM	Longitude WGS84 DDM
Camp	Camp	35° 52.173' N	106° 40.412' W	Drop Point	72	35° 51.127' N	106° 27.033' W
Camp	Cochiti FOB	35° 38.984' N	106° 19.867' W	Drop Point	74	35° 50.892' N	106° 25.450' W
Drop Point	10	35° 49.660' N	106° 29.832' W	Drop Point	76	35° 46.870' N	106° 24.998' W
Drop Point	14	35° 45.385' N	106° 33.719' W	Drop Point	77	35° 42.502' N	106° 23.081' W
Drop Point	18	35° 45.624' N	106° 34.396' W	Drop Point	79	35° 40.252' N	106° 21.898' W
Drop Point	25	35° 45.947' N	106° 35.426' W	Drop Point	81	35° 36.754' N	106° 21.027' W
Drop Point	37	35° 47.421' N	106° 35.096' W	Drop Point	83	35° 39.706' N	106° 25.267' W
Drop Point	40	35° 47.663' N	106° 36.147' W	Helibase	20	35° 52.823' N	106° 40.764' W
Drop Point	50	35° 48.735' N	106° 33.526' W	Helibase	30	35° 49.655' N	106° 19.077' W
Drop Point	51	35° 48.843' N	106° 33.974' W	Helispot	60	35° 43.609' N	106° 33.209' W
Drop Point	55	35° 48.866' N	106° 34.881' W	Helispot	70	35° 45.938' N	106° 35.069' W
Drop Point	57	35° 48.194' N	106° 35.289' W	Helispot	70	35° 47.672' N	106° 35.605' W
Drop Point	68	35° 48.049' N	106° 27.769' W	Helispot	70	35° 50.262' N	106° 29.625' W
Drop Point	69	35° 49.431' N	106° 28.303' W	Incident Command Post		35° 46.810' N	106° 41.318' W
Drop Point	70	35° 47.690' N	106° 30.661' W				