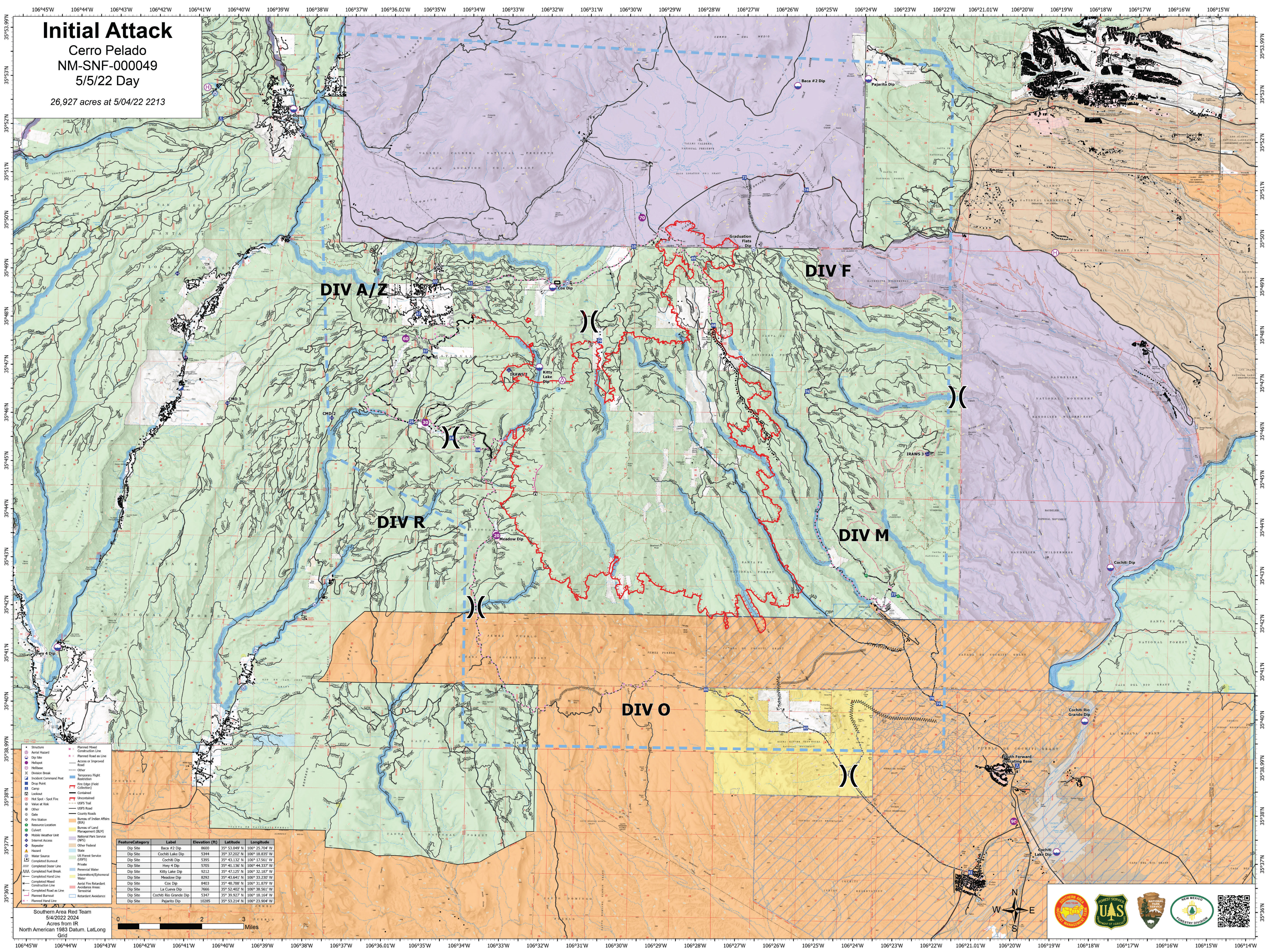


# Initial Attack

Cerro Pelado  
 NM-SNF-000049  
 5/5/22 Day

26,927 acres at 5/04/22 2213



- Structure
- Aspen Hazard
- Dip Site
- Hot Spot
- Hot Spot - Spok Fire
- Value at Risk
- Other
- Gate
- Fire Station
- Resource Location
- Culvert
- Mobile Weather Unit
- Internet Access
- Reservoir
- Hazard
- Water Source
- Completed Burnout
- Completed Ditch Line
- Completed Fuel Break
- Completed Hand Line
- Completed Road as Line
- Planned Burnout
- Planned Hand Line
- Planned Mined Construction Line
- Planned Road as Line
- Access or Improved Road
- Other
- Temporary Flight Restriction
- Fire Edge (Field Collection)
- Contained
- Uncontained
- USFS Trail
- USFS Road
- County Roads
- Bureau of Indian Affairs (BIA)
- Bureau of Land Management (BLM)
- National Park Service (NPS)
- Other Federal
- State
- US Forest Service (USFS)
- Private
- Perennial Water
- Intermittent/Ephemeral Water
- Aerial Fire Retardant
- Terrestrial
- Retardant Avoidance

| FeatureCategory | Label                  | Elevation (ft) | Latitude      | Longitude      |
|-----------------|------------------------|----------------|---------------|----------------|
| Dip Site        | Baca #2 Dip            | 8600           | 35° 53.049' N | 106° 25.704' W |
| Dip Site        | Cochiti Lake Dip       | 5344           | 35° 37.202' N | 106° 18.835' W |
| Dip Site        | Cochiti Dip            | 5395           | 35° 43.132' N | 106° 17.561' W |
| Dip Site        | Hwy 4 Dip              | 5705           | 35° 41.136' N | 106° 44.337' W |
| Dip Site        | Kitty Lake Dip         | 9212           | 35° 47.125' N | 106° 32.187' W |
| Dip Site        | Meadow Dip             | 8292           | 35° 43.641' N | 106° 33.230' W |
| Dip Site        | Cox Dip                | 8403           | 35° 48.788' N | 106° 31.879' W |
| Dip Site        | La Cuena Dip           | 7866           | 35° 52.402' N | 106° 38.561' W |
| Dip Site        | Cochiti Rio Grande Dip | 5347           | 35° 39.927' N | 106° 18.164' W |
| Dip Site        | Pajarito Dip           | 10285          | 35° 53.214' N | 106° 23.904' W |

Southern Area Red Team  
 5/4/2022 2024  
 Acres from IR  
 North American 1983 Datum, Lat/Long Grid

