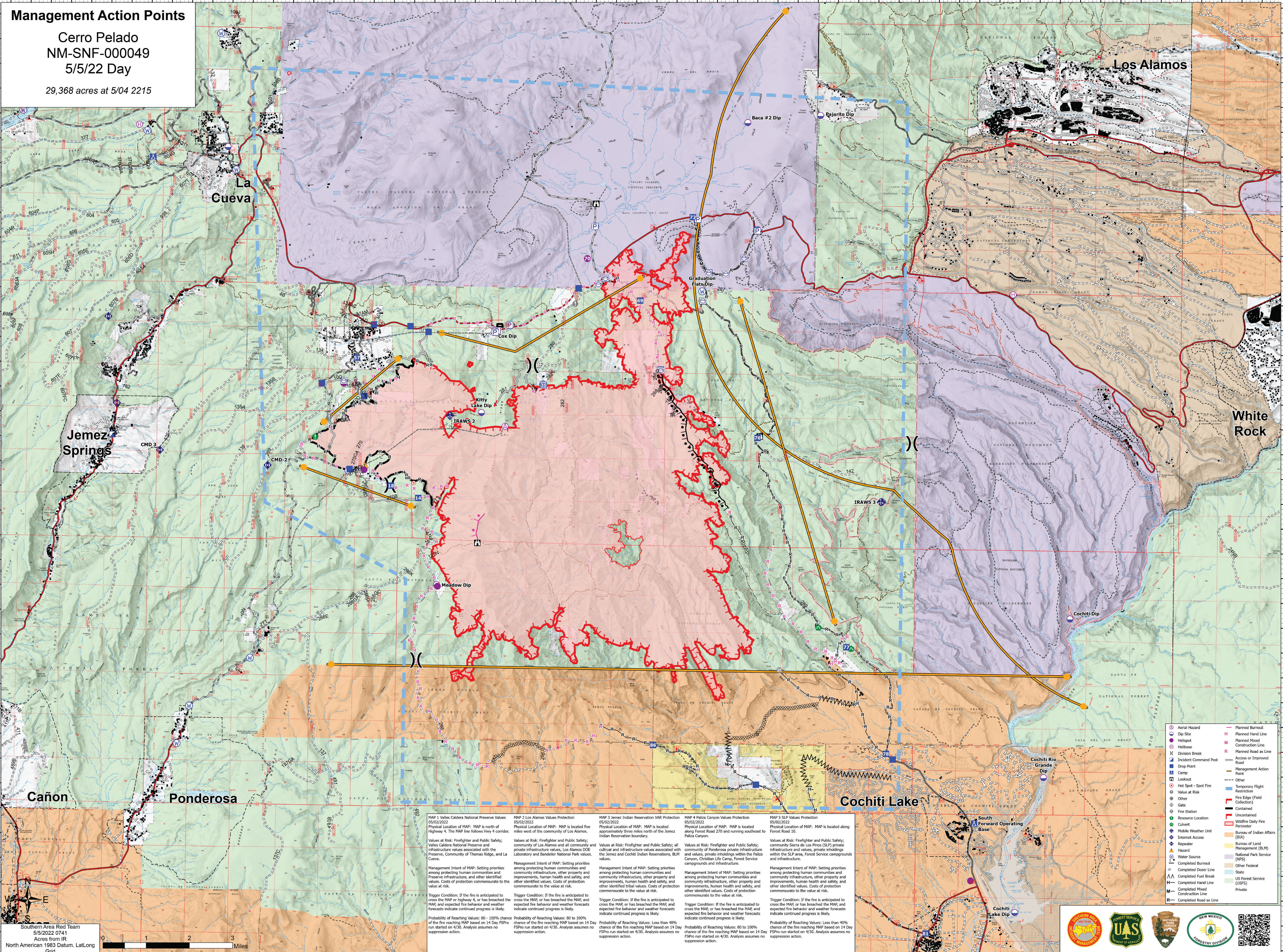
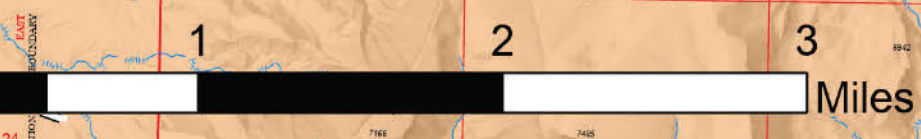


Management Action Points

Cerro Pelado
NM-SNF-000049
5/5/22 Day
29,368 acres at 5/04 2215



Southern Area Red Team
5/5/2022 0741
Acres from IR
North American 1983 Datum, Lat/Long
Grid



MAP 1 Valles Caldera National Preserve Values
05/02/2022
Physical Location of MAP: MAP is located five miles west of Highway 4. The MAP line follows Hwy 4 corridor.
Values at Risk: Firefighter and Public Safety; Valles Caldera National Preserve and Preserve infrastructure, and other identified values. Costs of protection commensurate to the value at risk.
Management Intent of MAP: Setting priorities among protecting human communities and private infrastructure values, Los Alamos DOE Laboratory and Banderler National Park values, and La Cueva.
Trigger Condition: If the fire is anticipated to cross the MAP or highway 4, or has breached the MAP, and expected fire behavior and weather forecasts indicate continued progress is likely.
Probability of Reaching Values: 80 - 100% chance of the fire reaching MAP based on 14 Day FSPno run started on 4/30. Analysis assumes no suppression action.

MAP 2 Los Alamos Values Protection
05/02/2022
Physical Location of MAP: MAP is located five miles west of the community of Los Alamos.
Values at Risk: Firefighter and Public Safety; community of Los Alamos and all community and private infrastructure values, Los Alamos DOE Laboratory and Banderler National Park values.
Management Intent of MAP: Setting priorities among protecting human communities and private infrastructure values, Los Alamos DOE Laboratory and Banderler National Park values, and other identified values. Costs of protection commensurate to the value at risk.
Trigger Condition: If the fire is anticipated to cross the MAP, or has breached the MAP, and expected fire behavior and weather forecasts indicate continued progress is likely.
Probability of Reaching Values: 80 to 100% chance of the fire reaching MAP based on 14 Day FSPno run started on 4/30. Analysis assumes no suppression action.

MAP 3 Jemez Indian Reservation VAR Protection
05/02/2022
Physical Location of MAP: MAP is located approximately three miles north of the Jemez Indian Reservation boundary.
Values at Risk: Firefighter and Public Safety; all cultural and infrastructure values associated with the Jemez and Cochiti Indian Reservations, BLM values.
Management Intent of MAP: Setting priorities among protecting human communities and community infrastructure, other property and improvements, human health and safety, and other identified values. Costs of protection commensurate to the value at risk.
Trigger Condition: If the fire is anticipated to cross the MAP, or has breached the MAP, and expected fire behavior and weather forecasts indicate continued progress is likely.
Probability of Reaching Values: Less than 40% chance of the fire reaching MAP based on 14 Day FSPno run started on 4/30. Analysis assumes no suppression action.

MAP 4 Paliza Canyon Values Protection
05/02/2022
Physical Location of MAP: MAP is located along Forest Road 270 and running southeast to Paliza Canyon.
Values at Risk: Firefighter and Public Safety; community of Ponderosa private infrastructure and values, private inholdings within the SLP area, Forest Service campgrounds and infrastructure.
Management Intent of MAP: Setting priorities among protecting human communities and community infrastructure, other property and improvements, human health and safety, and other identified values. Costs of protection commensurate to the value at risk.
Trigger Condition: If the fire is anticipated to cross the MAP, or has breached the MAP, and expected fire behavior and weather forecasts indicate continued progress is likely.
Probability of Reaching Values: 80 to 100% chance of the fire reaching MAP based on 14 Day FSPno run started on 4/30. Analysis assumes no suppression action.

MAP 5 SLP Values Protection
05/02/2022
Physical Location of MAP: MAP is located along Forest Road 10.
Values at Risk: Firefighter and Public Safety; community Sierra de Los Pinos (SLP) private infrastructure and values, private inholdings within the SLP area, Forest Service campgrounds and infrastructure.
Management Intent of MAP: Setting priorities among protecting human communities and community infrastructure, other property and improvements, human health and safety, and other identified values. Costs of protection commensurate to the value at risk.
Trigger Condition: If the fire is anticipated to cross the MAP, or has breached the MAP, and expected fire behavior and weather forecasts indicate continued progress is likely.
Probability of Reaching Values: Less than 40% chance of the fire reaching MAP based on 14 Day FSPno run started on 4/30. Analysis assumes no suppression action.

- Aerial Hazard
- Dip Site
- Hot Spot - Spot Fire
- Hot Spot - Fire Station
- Resource Location
- Water Source
- Completed Burnout
- Completed Dozer Line
- Completed Fuel Break
- Completed Hand Line
- Completed Mixed Construction Line
- Completed Road as Line
- Planned Burnout
- Planned Hand Line
- Planned Mixed Construction Line
- Planned Road as Line
- Access or Improved Road
- Management Action Point
- Other
- Temporary Flight Restriction
- Fire Edge (Field Collection)
- Contained
- Uncountained
- Wildfire Daily Fire Perimeter
- Bureau of Indian Affairs (BIA)
- Bureau of Land Management (BLM)
- National Park Service (NPS)
- Other Federal
- State
- US Forest Service (USFS)
- Private

