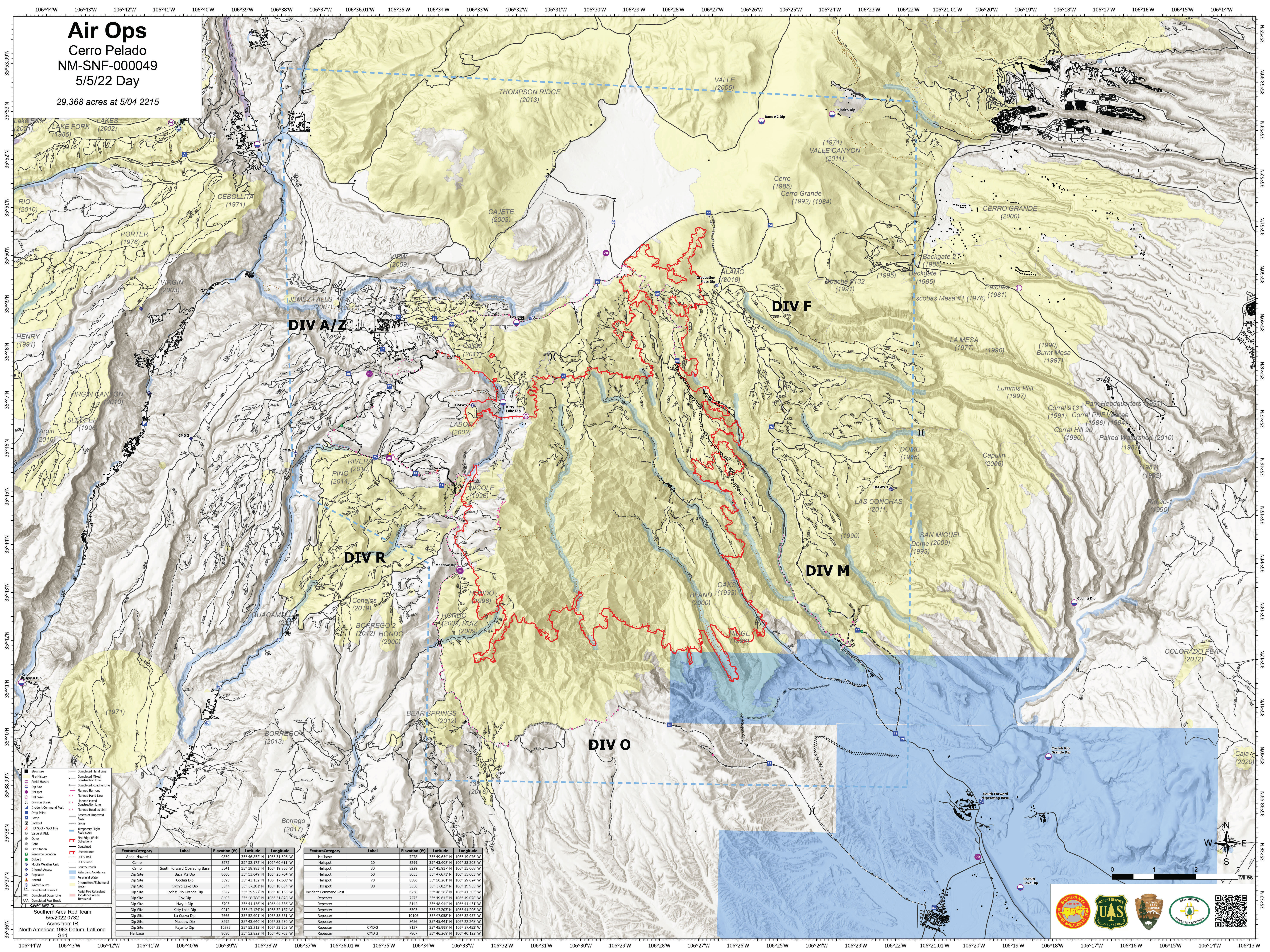


Air Ops

Cerro Pelado
NM-SNF-000049

5/5/22 Day

29,368 acres at 5/04 2215



- Structure
- Fire History
- Aerial Hazard
- Dip Site
- Helispot
- Helibase
- Division Break
- Incident Command Post
- Drop Point
- Camp
- Lookout
- Hot Spot - Spot Fire
- Value at Risk
- Cover
- Gate
- Fire Station
- Resource Location
- Culvert
- County Road
- Mobile Weather Unit
- Internet Access
- Repeater
- Water Source
- Completed Burnout
- Completed Burn Line
- Completed Fuel Break
- Completed Hand Line
- Completed Road
- Completed Road as Line
- Planned Burnout
- Planned Road Line
- Planned Road
- Construction Line
- Planned Road as Line
- Access or Improved Road
- Other
- Temporary Flight Restriction
- Fire Edge (Field Collection)
- Contaminated
- Uncontaminated
- USFS Trail
- USFS Road
- Retardant Avoidance
- Perennial Water
- Intermittent/Ephemeral Water
- Aerial Fire Retardant
- Completed Fuel Break
- Retardant Area
- Retardant

FeatureCategory	Label	Elevation (ft)	Latitude	Longitude
Aerial Hazard		9859	35° 46.852' N	106° 31.596' W
Camp	South Forward Operating Base	8272	35° 52.172' N	106° 40.411' W
Dip Site	Baca #2 Dip	8600	35° 53.949' N	106° 25.709' W
Dip Site	Cochiti Dip	5395	35° 43.132' N	106° 17.560' W
Dip Site	Cochiti Lake Dip	5344	35° 37.201' N	106° 18.834' W
Dip Site	Cochiti Rio Grande Dip	5347	35° 39.927' N	106° 18.163' W
Dip Site	Cox Dip	8403	35° 48.788' N	106° 31.878' W
Dip Site	Hwy 4 Dip	5705	35° 41.136' N	106° 44.336' W
Dip Site	Kitty Lake Dip	9212	35° 47.124' N	106° 32.107' W
Dip Site	La Cueva Dip	7666	35° 52.401' N	106° 38.561' W
Dip Site	Meadow Dip	8292	35° 43.640' N	106° 33.230' W
Dip Site	Pajarito Dip	10285	35° 53.213' N	106° 23.903' W
Helibase		8680	35° 52.822' N	106° 40.763' W

FeatureCategory	Label	Elevation (ft)	Latitude	Longitude
Helibase		7278	35° 49.654' N	106° 19.076' W
Helispot		8299	35° 43.608' N	106° 33.208' W
Helispot		8229	35° 45.937' N	106° 35.068' W
Helispot		8655	35° 47.671' N	106° 35.663' W
Helispot		8586	35° 50.261' N	106° 29.624' W
Helispot		5356	35° 37.827' N	106° 19.935' W
Incident Command Post		6258	35° 46.567' N	106° 41.305' W
Repeater		7275	35° 49.643' N	106° 19.078' W
Repeater		8142	35° 48.944' N	106° 41.451' W
Repeater		6303	35° 47.283' N	106° 41.236' W
Repeater		30106	35° 47.058' N	106° 32.957' W
Repeater		8456	35° 45.441' N	106° 32.248' W
Repeater	CMD-2	8127	35° 45.998' N	106° 37.453' W
Repeater	CMD 3	7807	35° 46.269' N	106° 40.122' W

Southern Area Red Team
5/5/2022 0732
Acres from IR
North American 1983 Datum, Lat/Long Grid

