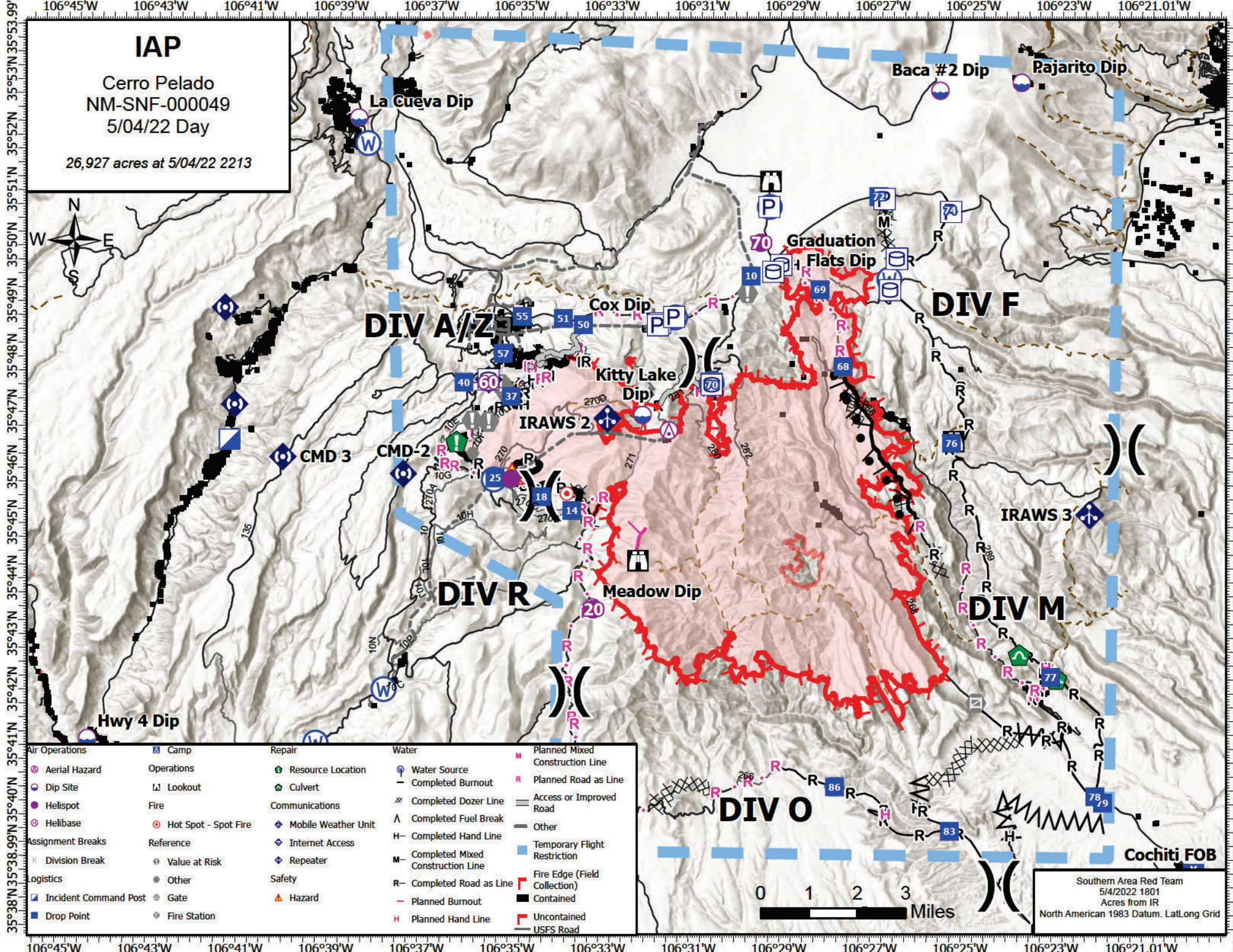


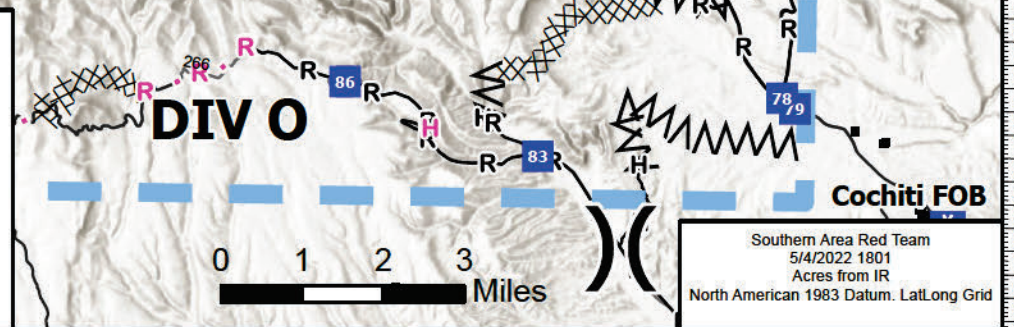
# IAP

Cerro Pelado  
NM-SNF-000049  
5/04/22 Day

26,927 acres at 5/04/22 2213



<b>Air Operations</b>	<b>Camp</b>	<b>Repair</b>	<b>Water</b>	<b>Planned Mixed Construction Line</b>
⊗ Aerial Hazard	Ⓜ Camp	🌿 Resource Location	💧 Water Source	Ⓜ Planned Mixed Construction Line
📍 Dip Site	👁️ Lookout	🌿 Culvert	— Completed Burnout	Ⓜ Planned Road as Line
📍 Helispot	🔥 Fire	📡 Communications	⚡ Completed Dozer Line	Ⓜ Access or Improved Road
⊗ Helibase	🔴 Hot Spot - Spot Fire	📡 Mobile Weather Unit	Ⓜ Completed Fuel Break	Ⓜ Other
<b>Assignment Breaks</b>	<b>Reference</b>	📡 Internet Access	Ⓜ Completed Hand Line	Ⓜ Temporary Flight Restriction
✂ Division Break	👤 Value at Risk	📡 Repeater	Ⓜ Completed Mixed Construction Line	🔴 Fire Edge (Field Collection)
<b>Logistics</b>	📍 Other	<b>Safety</b>	Ⓜ Completed Road as Line	Ⓜ Contained
👤 Incident Command Post	🚪 Gate	⚠️ Hazard	Ⓜ Planned Burnout	Ⓜ Uncontained
📍 Drop Point	👤 Fire Station		Ⓜ Planned Hand Line	Ⓜ USFS Road



Southern Area Red Team  
5/4/2022 1801  
Acres from IR  
North American 1983 Datum. LatLong Grid