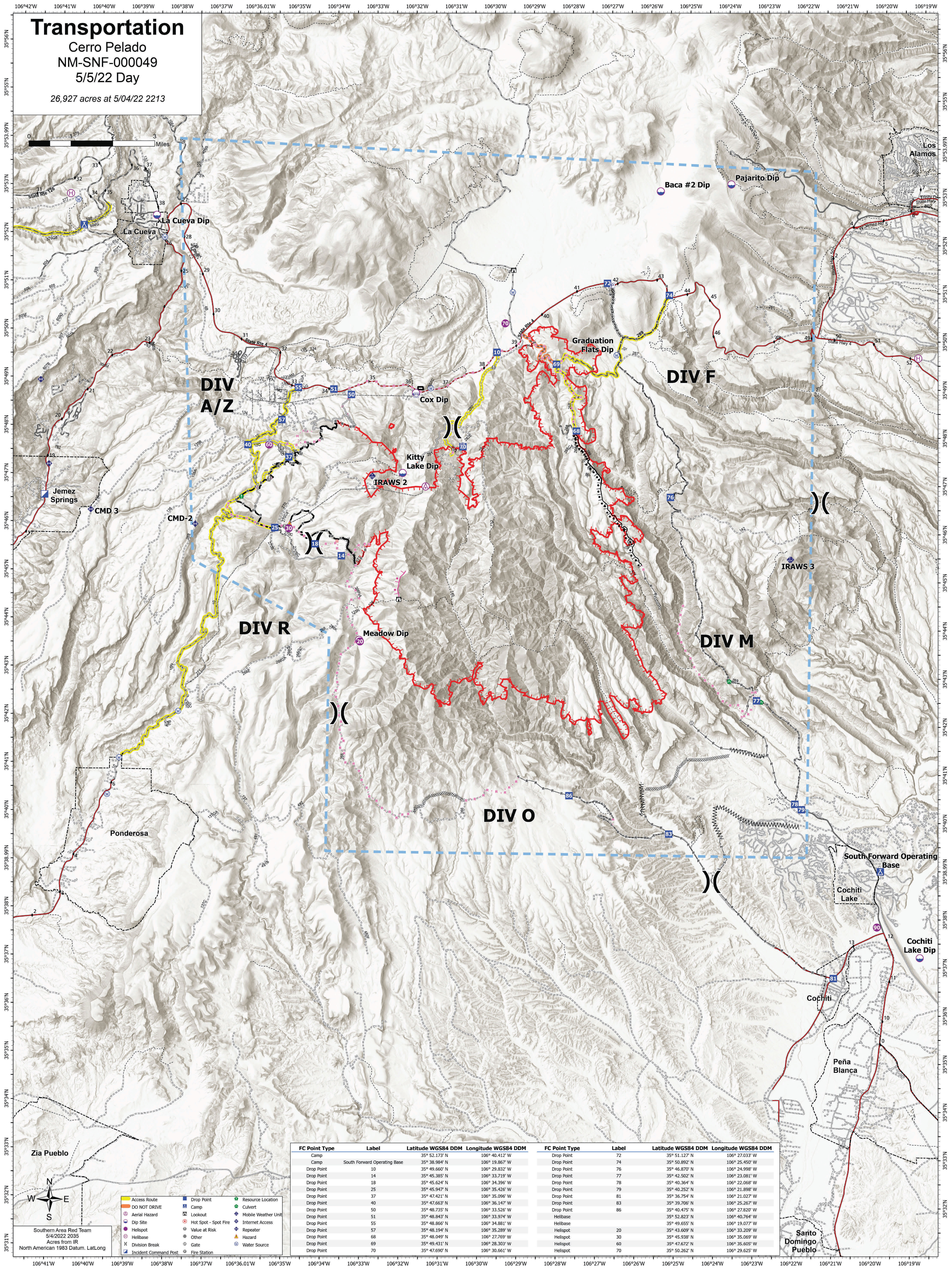


# Transportation

Cerro Pelado  
 NM-SNF-000049  
 5/5/22 Day

26,927 acres at 5/04/22 2213



**DIV A/Z**

**DIV R**

**DIV O**

**DIV M**

**DIV F**

Ponderosa

La Cueva

Graduation Flats Dip

Kitty Lake Dip

IRAWS 2

Meadow Dip

Baca #2 Dip

Pajarito Dip

Cox Dip

IRAWS 3

South Forward Operating Base

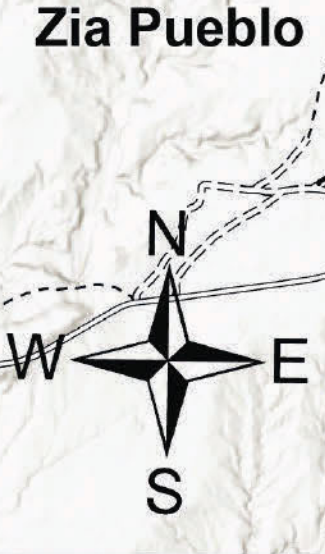
Cochiti Lake

Cochiti Lake Dip

Cochiti

Peña Blanca

Santo Domingo Pueblo



Southern Area Red Team  
 5/4/2022 2035  
 Acres from IR  
 North American 1983 Datum. Lat/Long

Access Route	Drop Point	Resource Location
DO NOT DRIVE	Camp	Culvert
Aerial Hazard	Lookout	Mobile Weather Unit
Dip Site	Hot Spot - Spot Fire	Internet Access
Helispot	Value at Risk	Repeater
Helibase	Hazard	Gate
Incident Command Post	Fire Station	

FC Point Type	Label	Latitude WGS84 DDM	Longitude WGS84 DDM	FC Point Type	Label	Latitude WGS84 DDM	Longitude WGS84 DDM
Camp		35° 52.173' N	106° 40.412' W	Drop Point	72	35° 51.127' N	106° 27.033' W
Camp	South Forward Operating Base	35° 38.984' N	106° 19.867' W	Drop Point	74	35° 50.892' N	106° 25.450' W
Drop Point	10	35° 49.660' N	106° 29.832' W	Drop Point	76	35° 46.870' N	106° 24.998' W
Drop Point	14	35° 45.385' N	106° 33.719' W	Drop Point	77	35° 42.502' N	106° 23.081' W
Drop Point	18	35° 45.624' N	106° 34.396' W	Drop Point	78	35° 40.364' N	106° 22.068' W
Drop Point	25	35° 45.947' N	106° 35.426' W	Drop Point	79	35° 40.252' N	106° 21.898' W
Drop Point	37	35° 47.421' N	106° 35.096' W	Drop Point	81	35° 36.754' N	106° 21.027' W
Drop Point	40	35° 47.663' N	106° 36.147' W	Drop Point	83	35° 39.706' N	106° 25.267' W
Drop Point	50	35° 48.735' N	106° 33.526' W	Drop Point	86	35° 40.475' N	106° 27.820' W
Drop Point	51	35° 48.843' N	106° 33.974' W	Helibase		35° 52.823' N	106° 40.764' W
Drop Point	55	35° 48.866' N	106° 34.881' W	Helibase		35° 49.655' N	106° 19.077' W
Drop Point	57	35° 47.421' N	106° 35.289' W	Helispot	20	35° 43.609' N	106° 33.209' W
Drop Point	68	35° 48.049' N	106° 27.769' W	Helispot	30	35° 45.938' N	106° 35.069' W
Drop Point	69	35° 49.431' N	106° 28.303' W	Helispot	60	35° 47.672' N	106° 35.605' W
Drop Point	70	35° 47.690' N	106° 30.661' W	Helispot	70	35° 50.262' N	106° 29.625' W