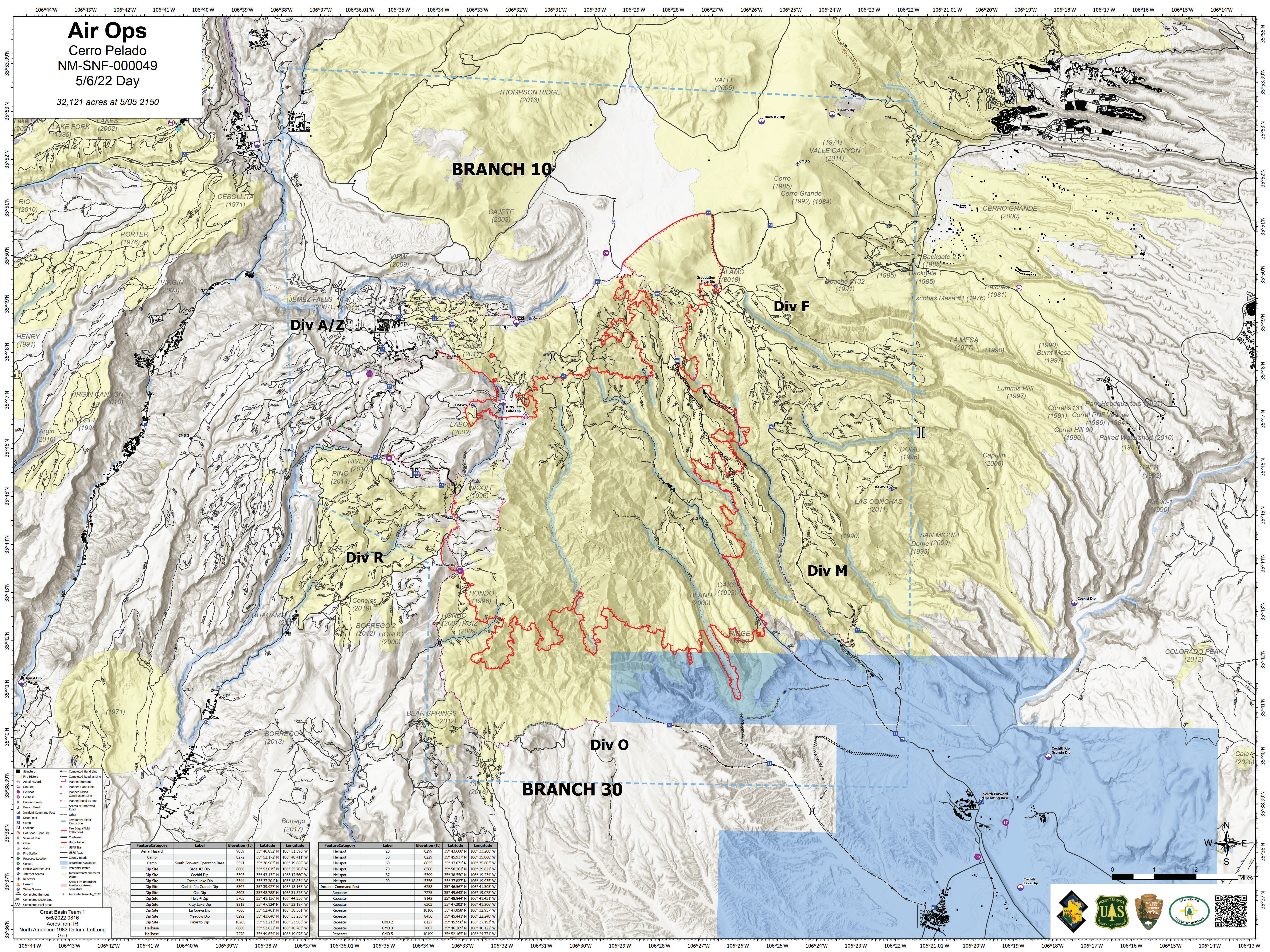


Air Ops

Cerro Pelado
NM-SNF-000049

5/6/22 Day

32,121 acres at 5/05 2150



Feature/Category	Label	Elevation (ft)	Latitude	Longitude
Aerial Hazard	9859	35° 46.852' N	106° 31.596' W	
Camp	South Forward Operating Base	8272	35° 52.172' N	106° 40.411' W
Camp	5541	35° 38.983' N	106° 19.866' W	
Dip Site	Baca #2 Dip	8600	35° 53.049' N	106° 25.704' W
Dip Site	Cochiti Dip	5395	35° 43.132' N	106° 17.560' W
Dip Site	Cochiti Lake Dip	5344	35° 37.201' N	106° 18.234' W
Dip Site	Cochiti Rio Grande Dip	5347	35° 39.927' N	106° 18.163' W
Dip Site	Cox Dip	8403	35° 48.788' N	106° 31.878' W
Dip Site	Hwy 4 Dip	5705	35° 41.136' N	106° 44.336' W
Dip Site	Kitty Lake Dip	9212	35° 47.124' N	106° 32.187' W
Dip Site	La Cueva Dip	7866	35° 52.401' N	106° 38.561' W
Dip Site	Meadow Dip	8292	35° 43.640' N	106° 33.232' W
Dip Site	Pajarito Dip	10285	35° 53.213' N	106° 23.903' W
Helibase	8680	35° 52.822' N	106° 40.763' W	
Helibase	7278	35° 49.654' N	106° 19.076' W	

Feature/Category	Label	Elevation (ft)	Latitude	Longitude
Helispot	20	8299	35° 43.608' N	106° 33.208' W
Helispot	30	8229	35° 45.937' N	106° 35.068' W
Helispot	60	8655	35° 47.671' N	106° 35.603' W
Helispot	70	8586	35° 50.261' N	106° 29.624' W
Helispot	87	5399	35° 38.530' N	106° 19.234' W
Helispot	90	5356	35° 37.827' N	106° 19.935' W
Incident Command Post		6258	35° 46.567' N	106° 41.305' W
Repeater		7275	35° 49.643' N	106° 19.078' W
Repeater		8142	35° 48.944' N	106° 41.451' W
Repeater		6303	35° 47.203' N	106° 41.206' W
Repeater		10106	35° 47.658' N	106° 32.957' W
Repeater		9456	35° 45.941' N	106° 22.946' W
Repeater	CMD-2	8127	35° 45.598' N	106° 37.453' W
Repeater	CMD 3	7807	35° 46.269' N	106° 40.122' W
Repeater	CMD 5	10199	35° 52.165' N	106° 24.771' W

Great Basin Time 1
5/6/2022 0816
Acres from
North American 1983 Datum, Lat/Long
Grid



0 1 2 3
MILES