

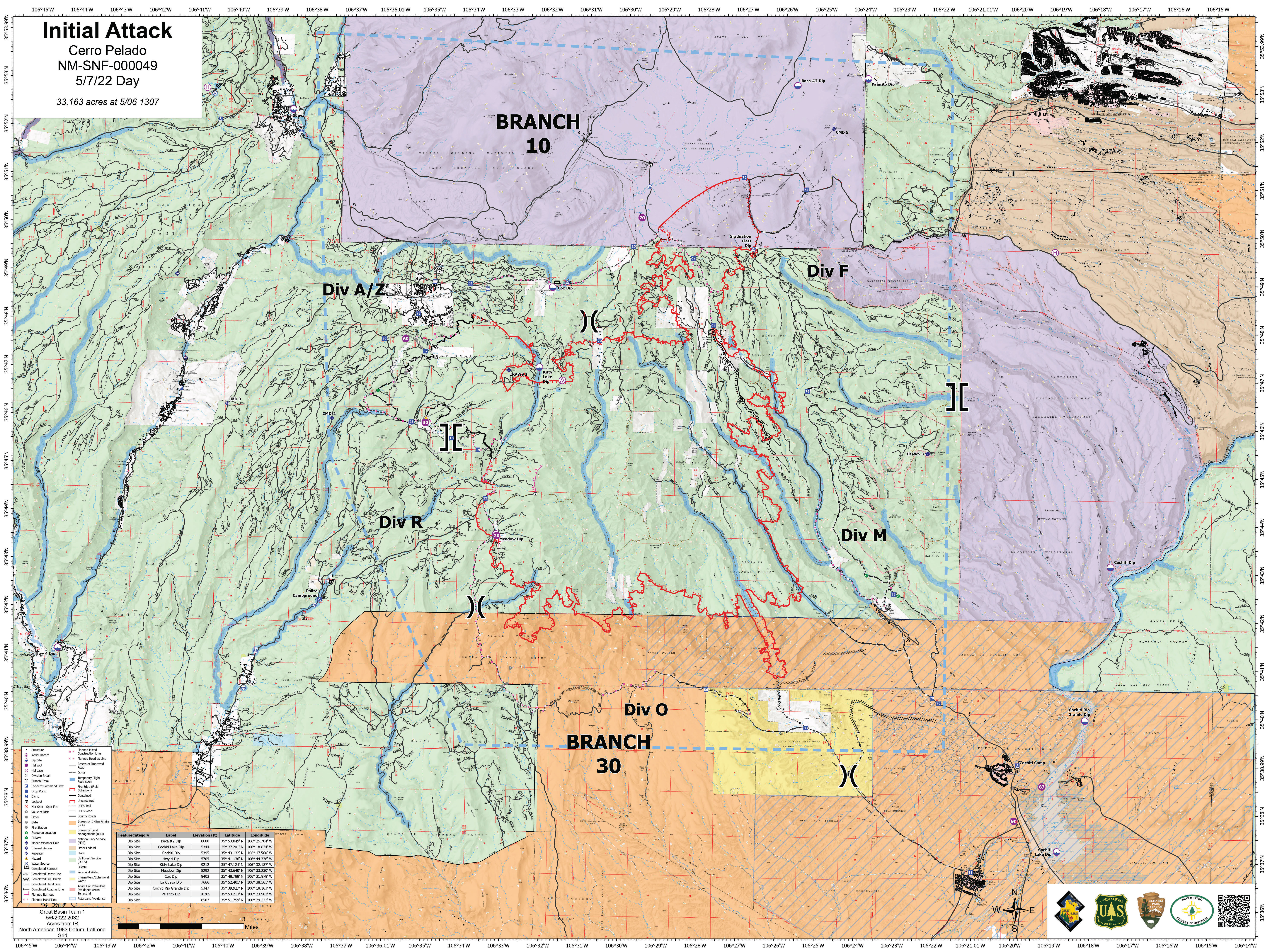
Initial Attack

Cerro Pelado

NM-SNF-000049

5/7/22 Day

33,163 acres at 5/06 1307



**BRANCH
10**

Div F

Div A/Z

Div M

Div R

Div O
**BRANCH
30**

Feature Category	Label	Elevation (ft)	Latitude	Longitude
Dip Site	Baca #2 Dip	8600	35° 53.049' N	106° 25.704' W
Dip Site	Cochiti Lake Dip	5344	35° 37.201' N	106° 18.834' W
Dip Site	Cochiti Dip	5395	35° 43.132' N	106° 17.560' W
Dip Site	Henry 4 Dip	5705	35° 41.136' N	106° 44.336' W
Dip Site	Kitty Lake Dip	9212	35° 47.124' N	106° 33.187' W
Dip Site	Meadow Dip	8292	35° 43.640' N	106° 33.230' W
Dip Site	Cox Dip	8403	35° 48.788' N	106° 31.878' W
Dip Site	La Cueva Dip	7665	35° 52.401' N	106° 38.561' W
Dip Site	Cochiti Rio Grande Dip	5347	35° 39.927' N	106° 18.163' W
Dip Site	Pajarito Dip	10285	35° 53.213' N	106° 23.903' W
Dip Site		8507	35° 51.759' N	106° 29.232' W

Great Basin Team 1
5/6/2022 2032
Acres from IR
North American 1983 Datum, Lat/Long
Grid

