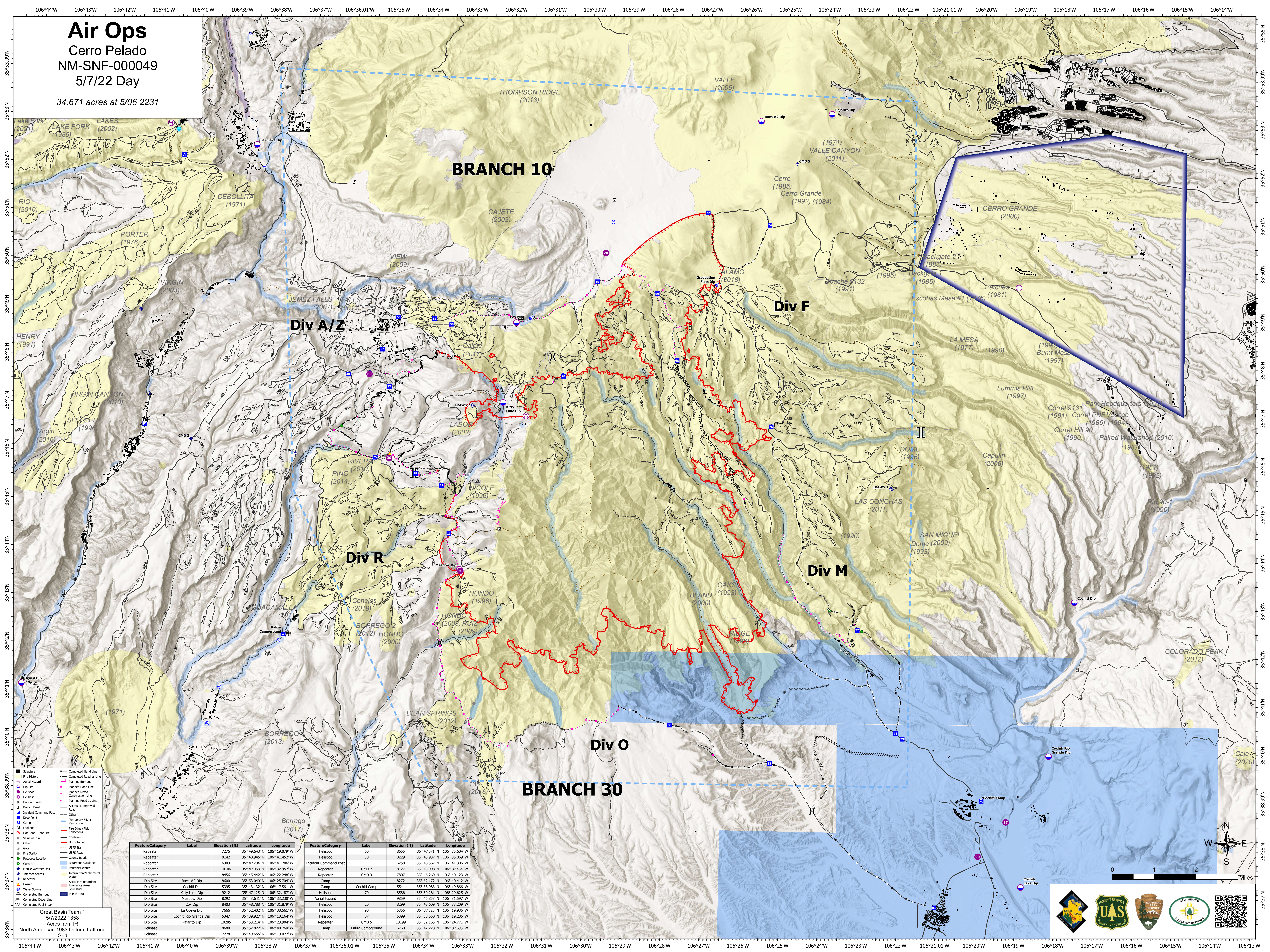


Air Ops

Cerro Pelado
NM-SNF-000049

5/7/22 Day

34,671 acres at 5/06 2231



FeatureCategory	Label	Elevation (ft)	Latitude	Longitude
Repeater		7275	35° 49.643' N	106° 19.079' W
Repeater		8142	35° 48.945' N	106° 41.452' W
Repeater		6303	35° 47.204' N	106° 41.206' W
Repeater		10106	35° 47.058' N	106° 32.957' W
Repeater		8456	35° 45.442' N	106° 22.248' W
Dip Site	Baca #2 Dip	8600	35° 52.049' N	106° 25.704' W
Dip Site	Cochiti Dip	5395	35° 43.132' N	106° 17.561' W
Dip Site	Kitty Lake Dip	9212	35° 47.125' N	106° 32.187' W
Dip Site	Meadow Dip	8292	35° 43.641' N	106° 33.230' W
Dip Site	Cox Dip	8403	35° 48.788' N	106° 31.879' W
Dip Site	La Cueva Dip	7666	35° 52.402' N	106° 38.561' W
Dip Site	Cochiti Rio Grande Dip	5347	35° 39.927' N	106° 18.164' W
Dip Site	Pajarito Dip	10285	35° 53.214' N	106° 23.904' W
Helibase		8680	35° 52.822' N	106° 40.764' W
Helibase		7278	35° 49.655' N	106° 19.077' W

FeatureCategory	Label	Elevation (ft)	Latitude	Longitude	
Helispot		60	8655	35° 47.671' N	106° 35.604' W
Helispot		30	8229	35° 45.937' N	106° 35.069' W
Incident Command Post		6258	35° 46.567' N	106° 41.306' W	
Repeater	CMD-2	8127	35° 45.998' N	106° 37.454' W	
Repeater	CMD 3	7807	35° 46.269' N	106° 40.123' W	
Camp		8272	35° 52.772' N	106° 40.412' W	
Camp	Cochiti Camp	5541	35° 38.583' N	106° 19.866' W	
Helispot		70	8586	35° 50.261' N	106° 29.625' W
Aerial Hazard		9859	35° 46.853' N	106° 31.597' W	
Helispot		20	8299	35° 43.609' N	106° 33.209' W
Helispot		90	5356	35° 37.828' N	106° 19.935' W
Helispot		67	5299	35° 38.558' N	106° 19.235' W
Repeater	CMD 5	10199	35° 52.165' N	106° 24.771' W	
Camp	Paliza Campground	6760	35° 42.228' N	106° 37.695' W	

Great Basin Team 1
5/7/2022 1358
Acres from 1P
North American 1983 Datum, Lat/Long Grid

Scale: 0 1 2 3 Miles