

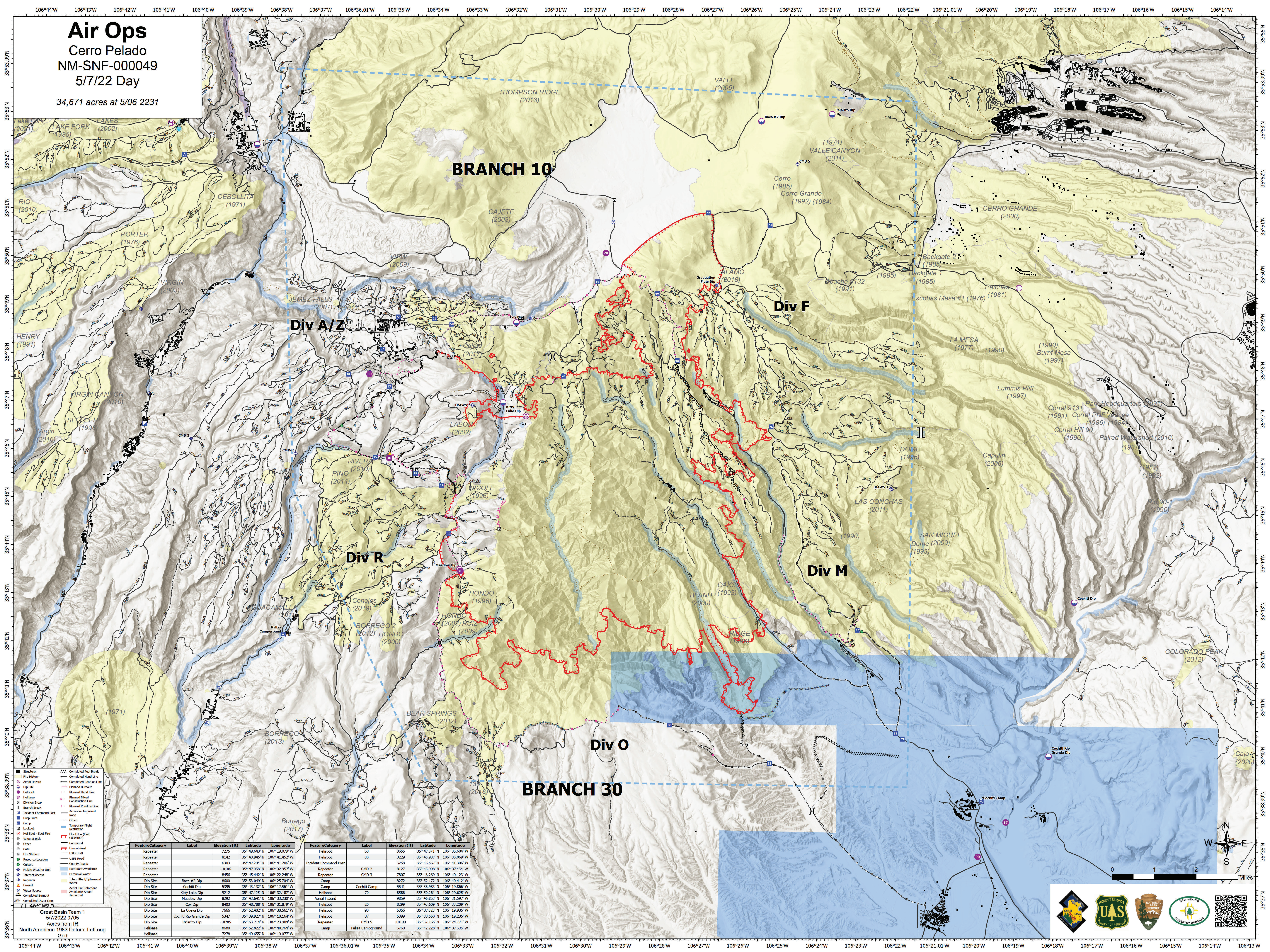
# Air Ops

## Cerro Pelado

### NM-SNF-000049

#### 5/7/22 Day

34,671 acres at 5/06 2231



FeatureCategory	Label	Elevation (ft)	Latitude	Longitude
Repeater	7275	35° 49.643' N	106° 19.079' W	
Repeater	8142	35° 48.945' N	106° 41.452' W	
Repeater	6303	35° 47.204' N	106° 41.206' W	
Repeater	10106	35° 47.058' N	106° 32.957' W	
Repeater	8455	35° 45.442' N	106° 22.248' W	
Dip Site	Baca #2 Dip	8600	35° 52.049' N	106° 25.704' W
Dip Site	Cochiti Dip	5395	35° 43.132' N	106° 17.561' W
Dip Site	Kitty Lake Dip	9212	35° 47.125' N	106° 32.187' W
Dip Site	Meadow Dip	6292	35° 43.641' N	106° 33.230' W
Dip Site	Cox Dip	8403	35° 48.789' N	106° 31.879' W
Dip Site	La Cuena Dip	7566	35° 52.402' N	106° 38.561' W
Dip Site	Cochiti Rio Grande Dip	5397	35° 39.927' N	106° 18.164' W
Dip Site	Pajarito Dip	10285	35° 53.214' N	106° 23.904' W
Helibase		8680	35° 52.822' N	106° 40.764' W
Helibase		7278	35° 49.655' N	106° 19.077' W

FeatureCategory	Label	Elevation (ft)	Latitude	Longitude
Helispot	60	8655	35° 47.671' N	106° 35.604' W
Helispot	30	8229	35° 45.937' N	106° 35.069' W
Incident Command Post		6258	35° 46.567' N	106° 41.306' W
Repeater	CHD-2	8127	35° 45.998' N	106° 37.454' W
Repeater	CHD 3	7807	35° 46.269' N	106° 40.123' W
Camp	CHD 3	8272	35° 52.772' N	106° 40.412' W
Camp	Cochiti Camp	5541	35° 38.583' N	106° 19.866' W
Helispot	70	8586	35° 50.261' N	106° 29.625' W
Aerial Hazard		9859	35° 46.853' N	106° 31.597' W
Helispot	20	8299	35° 43.609' N	106° 33.209' W
Helispot	90	5356	35° 37.828' N	106° 19.935' W
Helispot	67	5399	35° 38.552' N	106° 19.235' W
Repeater	CHD 5	10199	35° 52.165' N	106° 24.771' W
Camp	Paliza Campground	6760	35° 42.228' N	106° 37.695' W

Great Basin Team 1  
5/7/2022 0705  
Acres from  
North American 1983 Datum, Lat/Long  
Grid