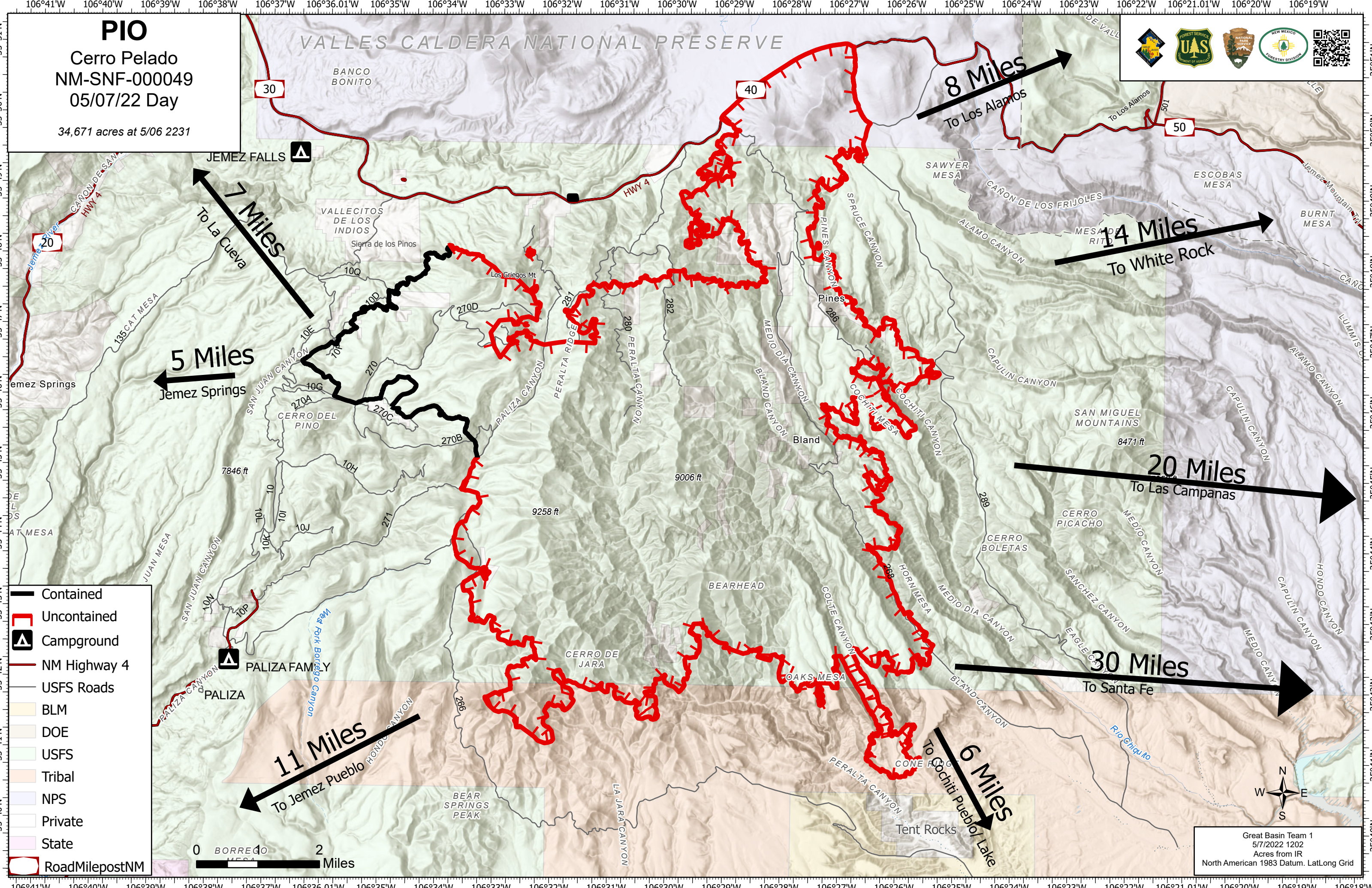


PIO
Cerro Pelado
 NM-SNF-000049
 05/07/22 Day
 34,671 acres at 5/06 2231



7 Miles
 To La Cueva

5 Miles
 To Jemez Springs

11 Miles
 To Jemez Pueblo

8 Miles
 To Los Alamos

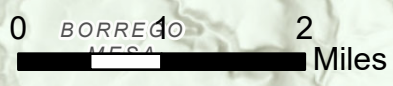
14 Miles
 To White Rock

20 Miles
 To Las Campanas

30 Miles
 To Santa Fe

6 Miles
 To Cochiti Pueblo/Lake

- Contained
- Uncontained
- Campground
- NM Highway 4
- USFS Roads
- BLM
- DOE
- USFS
- Tribal
- NPS
- Private
- State
- RoadMilepostNM



Great Basin Team 1
 5/7/2022 1202
 Acres from IR
 North American 1983 Datum, LatLong Grid

