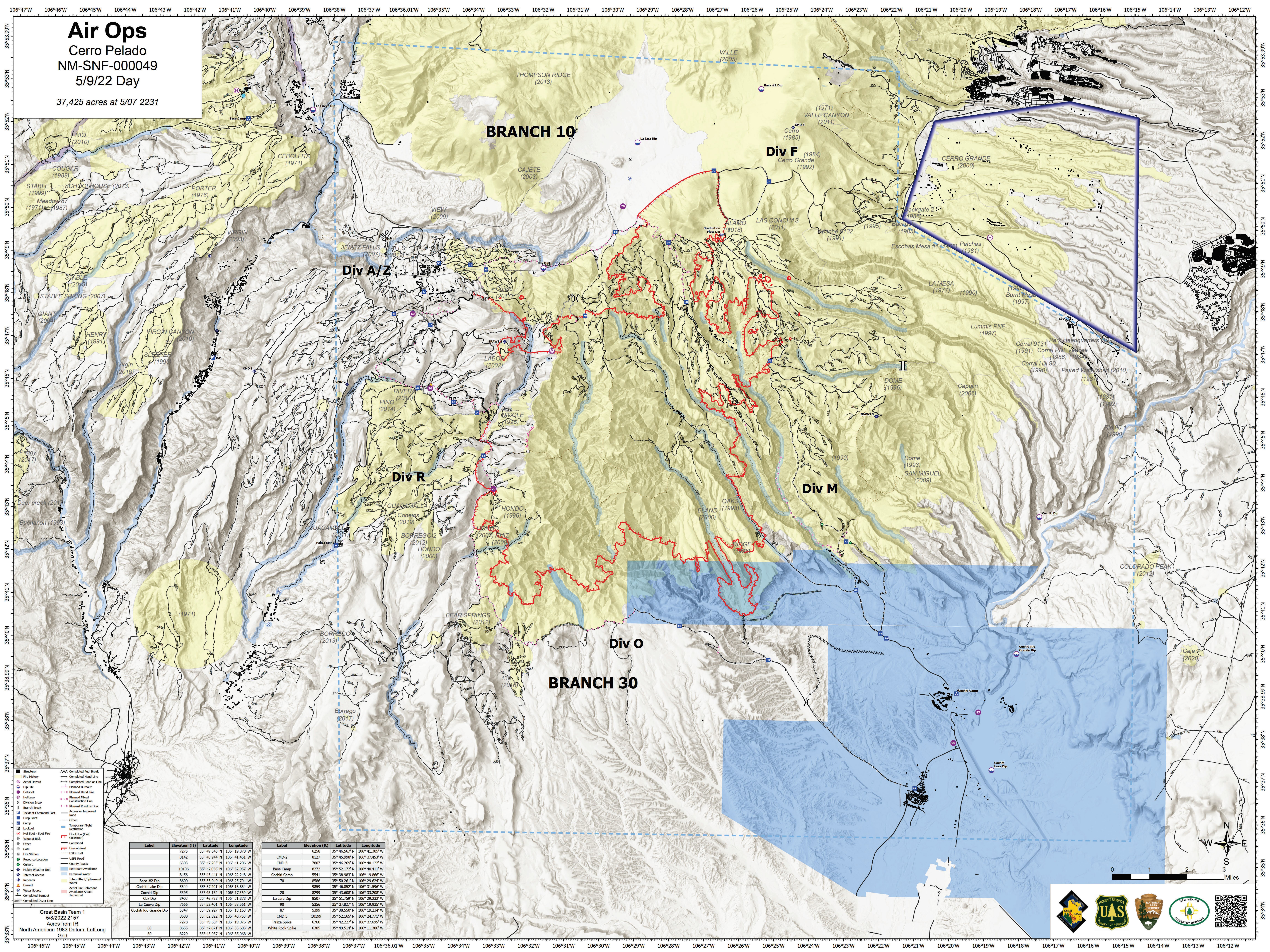


Air Ops

Cerro Pelado
 NM-SNF-000049
 5/9/22 Day

37,425 acres at 5/07 2231



| Label | Elevation (ft) | Latitude | Longitude |
|-------|----------------|----------------|----------------|
| 7275 | 35° 49.643' N | 106° 19.078' W | |
| 8142 | 35° 48.944' N | 106° 41.451' W | |
| 6303 | 35° 47.203' N | 106° 41.206' W | |
| 10106 | 35° 47.058' N | 106° 32.957' W | |
| 8458 | 35° 45.441' N | 106° 22.248' W | |
| 8600 | 35° 53.049' N | 106° 25.704' W | |
| 5344 | 35° 37.201' N | 106° 18.834' W | |
| 5395 | 35° 43.132' N | 106° 17.560' W | |
| 8403 | 35° 48.788' N | 106° 31.878' W | |
| 7666 | 35° 52.401' N | 106° 38.561' W | |
| 5347 | 35° 39.927' N | 106° 18.163' W | |
| 8600 | 35° 52.822' N | 106° 40.753' W | |
| 7278 | 35° 49.654' N | 106° 19.076' W | |
| 60 | 8655 | 35° 47.671' N | 106° 35.603' W |
| 30 | 8229 | 35° 45.937' N | 106° 35.068' W |

| Label | Elevation (ft) | Latitude | Longitude |
|------------------|----------------|----------------|----------------|
| 6258 | 35° 46.567' N | 106° 41.305' W | |
| CMD-2 | 8127 | 35° 45.998' N | 106° 37.453' W |
| CMD 3 | 7807 | 35° 46.269' N | 106° 40.122' W |
| Base Camp | 8272 | 35° 52.172' N | 106° 40.411' W |
| Cochiti Camp | 5541 | 35° 38.983' N | 106° 19.866' W |
| 70 | 8586 | 35° 52.861' N | 106° 29.824' W |
| 9859 | 35° 46.852' N | 106° 31.596' W | |
| 20 | 8299 | 35° 43.608' N | 106° 33.208' W |
| La Jara Dip | 8507 | 35° 51.759' N | 106° 29.232' W |
| 90 | 5356 | 35° 37.827' N | 106° 19.935' W |
| 539 | 5399 | 35° 38.550' N | 106° 19.294' W |
| CMD 5 | 10199 | 35° 52.165' N | 106° 24.771' W |
| Paliza Spoke | 6760 | 35° 42.227' N | 106° 37.695' W |
| White Rock Spoke | 6305 | 35° 49.514' N | 106° 11.306' W |

- Structure
- Fire History
- Aerial Hazard
- Dip Site
- Helispot
- Helibase
- Division Break
- Branch Break
- Incident Command Post
- Drip Point
- Camp
- Lookout
- Hot Spot - Spot Fire
- Value at Risk
- Other
- Gate
- Fire Station
- Resource Location
- Culvert
- Mobile Weather Unit
- Internet Access
- Repeater
- Hazard
- Water Source
- Completed Burnout
- Completed Dose Line
- Completed Hand Line
- Completed Road on Line
- Planned Burnout
- Planned Hand Line
- Planned Mixed Construction Line
- Planned Road on Line
- Access or Improved Road
- Other
- Temporary Flight Restriction
- Fire Edge (Field Collection)
- Uncontained
- USFS Trail
- USFS Road
- County Roads
- Relatant Evidance
- Perennial Water
- Intermittent/Ephemeral Water
- Aerial Fire Retardant
- Avoidance Areas: Terrestrial

Great Basin Team 1
 5/8/2022 2157
 Acres from IR
 North American 1983 Datum, Lat/Long Grid

