

Operations

Cerro Pelado
NM-SNF-000049

5/10/22 Day

42,491 acres at 5/09 at 2224

BRANCH 10

Div F

Div A/Z

Div R

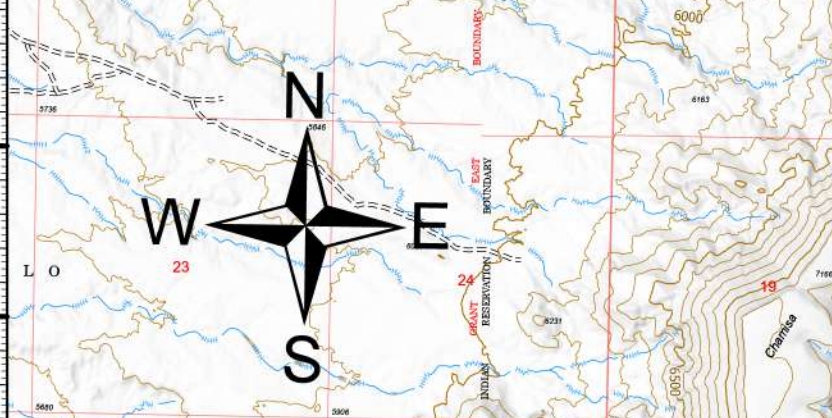
Div M

Div O

BRANCH 30



- Aerial Hazard
- Dip Site
- Heliport
- Hot Spot
- Branch Break
- Incident Command Post
- Drop Point
- Camp
- Lookout
- Hot Spot - Spot Fire
- Value at Risk
- Other
- Gate
- Fire Station
- Resource Location
- Culvert
- Mobile Weather Unit
- Internet Access
- Repeater
- Water Source
- Completed Burnout
- Completed Dozer Line
- Completed Fuel Break
- Completed Road as Line
- Planned Burnout
- Planned Hand Line
- Planned Mixed Construction Line
- Planned Road as Line
- Access or Improved Road
- Other
- Temporary Flight Restriction
- Fire Edge (Field Collection)
- Uncontaminated
- Old Fireline
- Unknown Line Type
- Old Dozer Line
- Old Hand Line
- Old Completed Line
- LANL Boundary
- Fluorimeter
- Highway
- Highway w/Median
- Road - Light Duty - Dirt
- Road - Light Duty - Gravel
- Road - Light Duty - Bit
- Road - Light Duty - Gravel
- Road - Light Duty - Bit
- Unimproved Road
- Other
- Important Roads



Great Basin Team 1
5/10/2022 0542
Acres from IR
North American 1983 Datum, Lat/Long Grid

